

SPRING MILL INN

For Reservations and Further Information

Write to Reservation Clerk

Spring Mill Inn

Box 68, Mitchell, Indiana 47446

OPEN ALL YEAR

Rooms Available

Dining Room Open to the Public

(812) 849-4081

THIS IS YOUR PARK

All visitors are expected to observe the following rules which are designed to fulfill the purpose for which state parks were established, namely, to preserve a primitive landscape in its natural condition for the use and enjoyment of the people.

SUMMARY OF RULES AND REGULATIONS

1. Do not injure or damage any structure, rock, tree, flower, bird or wild animal within the park (See No. 2). Do NOT gather limbs, brush or trees (either live or dead) for firewood! It MUST be allowed to remain to rebuild the natural humus.
2. Any firearm, BB gun, air gun, CO₂ gun, bow and arrow, or spear gun in possession in a state park must be unloaded or un-nocked and stored in a case or locked within a vehicle except when participating in an activity authorized by written permit.
3. Dogs and cats must be kept on leash while in the Park.
4. There shall be no vending or advertising without permission of the Department of Natural Resources.
5. Camping is permitted only in the campground.
6. Fires shall be built only in places provided. Visitors must put waste in receptacles provided for that purpose.
7. Motorists will observe speed limits as posted, and park in designated areas.
8. Swimming is limited to such places and times as designated by the Department.
9. Drinking water should be taken only from pumps, hydrants or fountains provided for that purpose. This water supply is tested regularly for purity.
10. Cave exploration at Spring Mill allowed by permit only, or on trips conducted by qualified park guides.
11. Report lost or found articles to the Property Manager.

The programs, services, facilities, and activities of the Indiana Department of Natural Resources are available to everyone without regard to sex, creed, color or national origin.

THE INTELLIGENT USE OF LEISURE TIME

The trail map is given to you with the compliments of the state of Indiana through the Department of Natural Resources in the hope that it will direct your attention to the primary purpose for which the state park system has been established.

These recreational areas are parts of 'original America', preserving for posterity typical primitive landscapes of scenic grandeur and rugged beauty.

Along the quiet trails through these reservations, it is to be expected that the average citizens will find release from the tension of their overcrowded daily existence, that the contact with nature will refocus with a clearer lens their perspective on life's values and that they may here take counsel with themselves to the end that their strength and confidence are renewed.

1-90

SPRING MILL STATE PARK

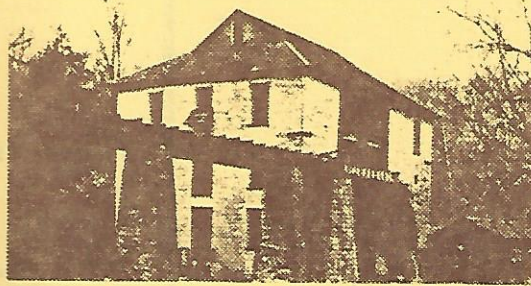
Box 376, Mitchell, Indiana 47446

812/849-4129

TRAIL MAP

Established 1927 Area 1,319 Acres

On Indiana 60, near Mitchell



Spring Mill State Park has been aptly called a place where visitors can "travel through time." A massive water-powered grist mill, powered by water from the nearby Hamer Cave, is the focal point of the reconstructed pioneer village which flourished in the 1800's. The story of the original village began in 1814 when young Samuel Jackson, Jr., built a small mill from logs near the cave mouth and settled there with his family in the deep valley. In 1817, the wealthy Bullitt brothers, purchased the land from Jackson and sought to develop it. They constructed the three-story mill made of limestone that is standing today. Local resources were used as the limestone was quarried from surrounding hillsides and the flume, wheel, and woodworks inside were all from native hardwoods. The village grew and in 1823 the Bullitts sold it for a substantial profit to another set of brothers, the Montgomerys of Philadelphia. In addition to the mill, mill office, and two large homes that were already there, they built a water-powered sawmill attached to the mill itself and the tavern and distillery. A post office was established there in 1828 under the name of Arcole Village.

Due to illness, the owners sold the village in 1832 to two enterprising young brothers. Under the Hamers, the village reached its peak in the middle 1800's. The village owners actually lived there as it was not just a possession to them but a home. Hugh Hamer, the miller, changed the village name to Spring Mill. Hugh became very wealthy—his magnificent two-story log home and formal garden attest to that fact. Tom Hamer's house is across from his brother's and the two shared the same spring house, barns, summer kitchen, and nursery school. It is said that in its heyday the mill operated day and night with people waiting nine or ten days in line to get their corn and wheat ground into meal.

What would cause a bustling village like this to die? Times changed and the water-powered mills were replaced by engines, the railroad would not dip into the deep valley to make stops, and the village had fewer craftsmen and fewer people to do business. The last owner, Jonathan Turley, closed the entire operation in 1892. A cement company in Mitchell bought the land for water rights to the cave which they used to cool their lime kilns. The village deteriorated and fell into ruin.

Many local people worked to have the area reconstructed and converted into a state park. In 1928, their dream came true and reconstruction began. Two homes were brought into the

village which were not originally there. They are the Granny White House, built in 1824, and the Sheeks House, built in 1816, near the village area. Even today, workers continue to improve the buildings and displays so that visitors can experience and enjoy this period of Indiana history.

A stroll through the pioneer cemetery, first used in 1832, adds even more reality to the village story. The cemetery is located uphill from the pioneer village adjacent to the main park road.

While the village and cemetery reflect on Indiana's frontier heritage, the Virgil I. Grissom Memorial reminds visitors that there is another challenging frontier - space. "Gus" Grissom, a native of Mitchell, was one of the seven original astronauts and the second man to travel in space. On display inside are his space suit, the "Molly Brown" Gemini space capsule, and a montage of pictures. The memorial depicts the life of one of America's greatest heroes.

Spring Mill State Park has a great natural heritage too. The Donaldson Woods Nature Preserve is a 67 acre stand of virgin forests. It is one of the few tracts of old growth hardwoods left in the state, although this type of forest once covered most of Indiana. The largest trees are tulip, but the most common tree in these woods is the white oak. The park has two major cave systems and the waters from both drain into Spring Mill Lake, a thirty acre lake which is used for fishing and boating. The Hamer Cave system is never entered unless with special permission, and its water feeds the grist mill. The Twin-Bronson-Donaldson system flows on the other side of the park and is famous for its population of the northern blind cave fish.

The geology is renown for its sinkholes, evident along park trails, its sinks and rises of water, and varied lime-stone outcroppings. Both Donaldson Woods and the Donaldson-Twin Cave system have been recognized and honored by the federal government as national natural landmarks.

The park's fauna and flora can be observed by hiking any one of five trails available in the park. These trails range in length and terrain from moderate to rugged. A naturalist service is available year-round to lead hikes on a wide variety of topics, including cave tours. The Junior Naturalist patch program is available to park visitors of any age.

Spring Mill offers a wide range of facilities and activities. We urge you to take advantage of them and hope that you enjoy your stay at Spring Mill State Park.

SNAKES!!!

The park has a wide variety of native snakes which are harmless and serve a natural purpose of keeping rodent and insect numbers in control. Please do not harm them. Poisonous snakes are extremely RARE here.

DESCRIPTION OF TRAILS

1. Short loop from inn to foot of hill, along Donaldson branch and lake, and return up the hill to the inn.
2. Connects village parking area to picnic area and boat docks.
3. Long loop trail which one may enter near the nature cabin; pass Donaldson Cave gorge, then through dense woods past sink holes; then through Donaldson Woods past Bronson Cave and on to Twin Caves; then return to the nature cabin or picnic area through beautiful stands of virgin woods.
4. Loop trail may be entered from trail 4 at picnic area or junction of 1 and 4 near inn; goes by Donaldson Cave, and Hamer Cemetery; to village.

5. Follows lower section of lake from bridge around to boat docks; near 2 which leads to the picnic area and parking area.

STAY ON MARKED TRAILS



ACTIVITIES AND FACILITIES

SPRING MILL THEATRE Celebrating over a decade of quality live theatre at Spring Mill Inn. Regular season runs from June through August.

BOATS - Rental boats by hour or day. April through October. Privately owned boats may be launched on lake. Only electric trolling motors, powered by no more than two twelve-volt batteries are allowed.

CAMPING - Campground equipped with modern facilities. Occupancy limited to two weeks. Some sites will accommodate trailers. Electricity, modern restrooms, hot showers, and dumping station available. Some campsites available for reservation by mail or in person.

CAVE TRIPS - Boats rides in Twin Caves are available from April through October. The ride goes approximately 500 feet into the cave and turns around. Several interesting features may be seen on this tour. During heavy rain periods the caves may be too flooded to offer tours. Walking tours are offered by the naturalist service into Bronson and Donaldson Caves. **EXPLORATION NOT PERMITTED.**

HIKING - With miles of moderate to rugged trails, hiking is one of the most popular activities at Spring Mill.

INN - Open all year. All rooms have a private bath, telephone, color T.V., air-conditioning. Dining room is open to all park visitors serving a complete menu for breakfast, luncheon and dinner. Indoor/outdoor pool and full conference facilities available. Reservations accepted in advance. No pets allowed.

NATURALIST SERVICE - Available all year. Inquire at inn, park office, or nature cabin. Scheduled programs include hikes, cave tours, history talks, junior naturalist program, and evening programs. Special groups wishing programs just for their group should call in advance. Free.

PIONEER VILLAGE - Grist mill in operation daily, April through October. Pioneer log houses. Village store, apothecary shop, Shoemakers, tavern, distillery, weavers, meeting house, pioneer garden, carpenter and blacksmith.

FISHING - Bass, bluegill, trout and other small game fish. State license required.

GRISSOM MEMORIAL - A feature of the park is the Virgil I. Grissom Memorial which is a tribute to America's second man in space. Gus Grissom was a native of nearby Mitchell, Indiana. His space suit and Gemini III space capsule are on display. Open daily all year. No admission fee.

PICNIC AREAS - Tables, grills, toilet facilities, playground equipment, shelter houses reservable. Contact park office.

CORN MEAL - Three pound bags obtainable at mill in village, spring through fall.

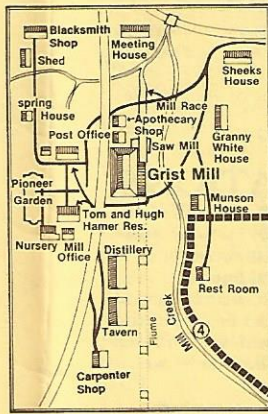
LOOM PRODUCTS - Obtainable at Sheeks House in village, spring through fall.

SADDLE HORSES - Trail rides offered. Hayrides available in evenings. Inquire at saddle barn, April through October.

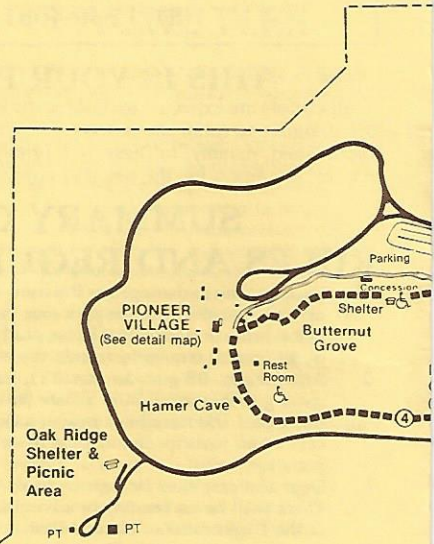
STORE - Camp store open April through October. Film and supplies for sale.

SWIMMING - Olympic size pool with bathhouse and wading pool; open the Saturday before Memorial Day until Labor Day. Swimming is not permitted in other areas of the park.

PARK CAVES - The cave systems have deep water, delicate animal life, and can be extremely hazardous. *Except as noted below, cave exploration is allowed by permit only. Inquire at the park office.* Tours are offered into Donaldson and Bronson caves by naturalists. The dry side of Donaldson Cave may be explored on your own.



PIONEER VILLAGE

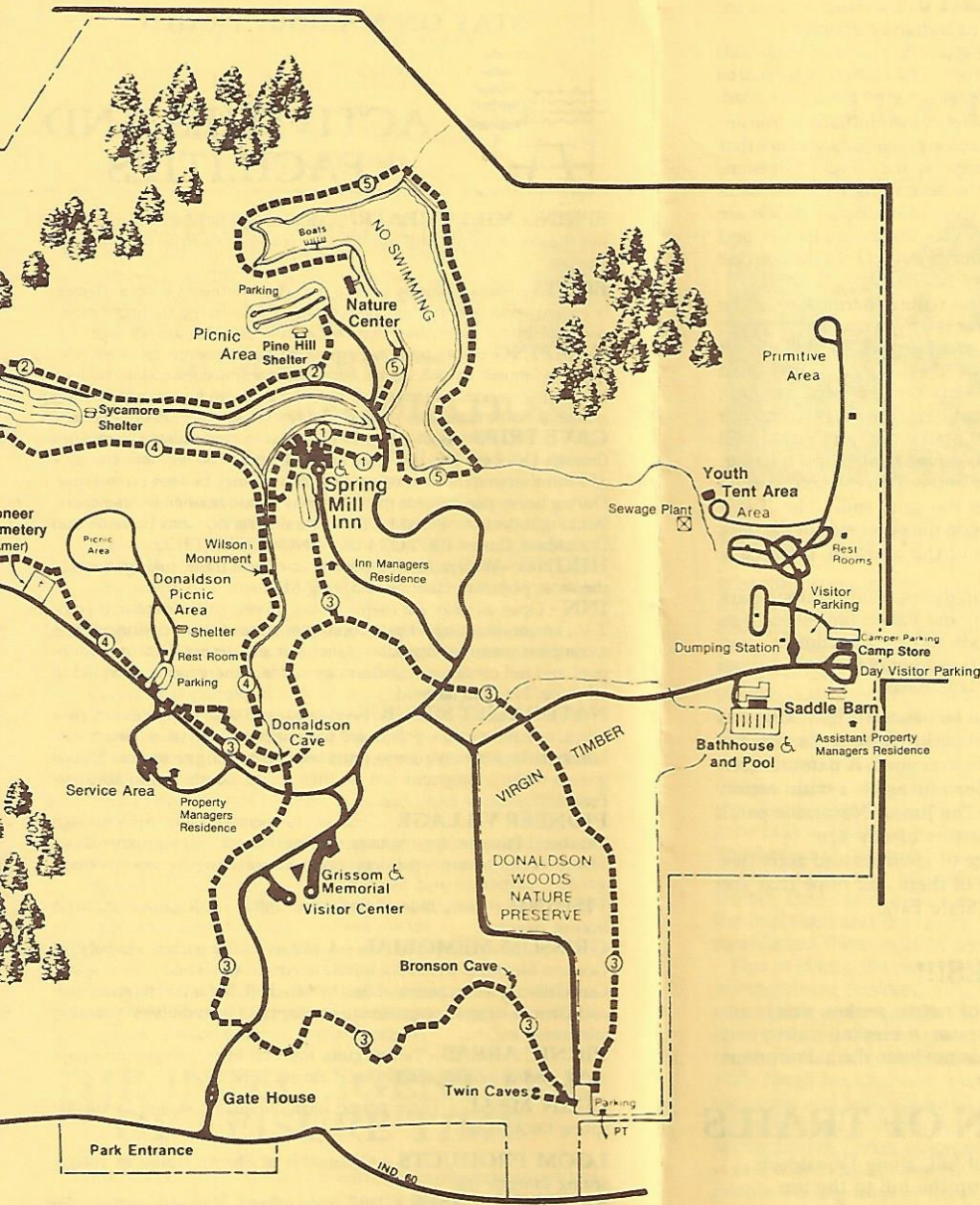


LOCATION MAP



Established in 1927 1,319 Acres
Mitchell, Indiana

TRAIL TABLE			
TRAIL	MILEAGE	TRAIL TYPE	TRAIL
1	3/8	Moderate	4
2	1/2	Moderate	5
3	2 1/2	Rugged	



MILEAGE	TRAIL TYPE
2	Rugged
1	Moderate

LEGEND

	Road
	Hiking Trail
	Pit Toilet
	Usable by Handicapped

