



SUMMARY OF RULES AND REGULATIONS

1. Do not injure or damage any structure, rock, tree, flower, bird or wild animal within the Park (See No. 2). Do NOT gather limbs, brush or trees (either live or dead) for firewood! It MUST be allowed to remain to rebuild the natural humus.
2. All firearms, BB guns, air guns, bows and arrows, CO₂ guns or spear guns must be unloaded, or unstrung and stored in a case or locked in a vehicle when using campgrounds in the Department of Natural Resources.
3. Dogs and cats must be kept on leash while in the Park.
4. There shall be no vending or advertising without permission of the Department.
5. Camping is permitted only in the campground. Youth groups must be under adult supervision.
6. Fires shall be built only in places provided. Visitors must put waste in receptacles provided for that purpose.
7. Motorists will observe speed limits as posted and park in designated areas.
8. Swimming is limited to such places and times as designated by the Department.
9. Drinking water should be taken only from pumps, hydrants or fountains provided for that purpose. This water supply is tested regularly for purity.
10. Report Lost or Found articles to the Property Manager.

THE INTELLIGENT USE OF LEISURE TIME

This trail map is given to you with the compliments of the State of Indiana through its Department of Natural Resources in the hope that it will direct your attention to the primary purpose for which the State Park system has been established.

These recreational areas are parts of "original America," preserving for posterity typical primitive landscapes of scenic grandeur and rugged beauty.

Along the quiet trails through these reservations, it is to be expected that the average citizen will find release from the tension of their overcrowded daily existence; that the contact with nature will refocus with a clearer lens their perspective on life's values and that they may here take counsel with themselves to the end that their strength and confidence are renewed.

50M 1-86

SHAKAMAK STATE PARK

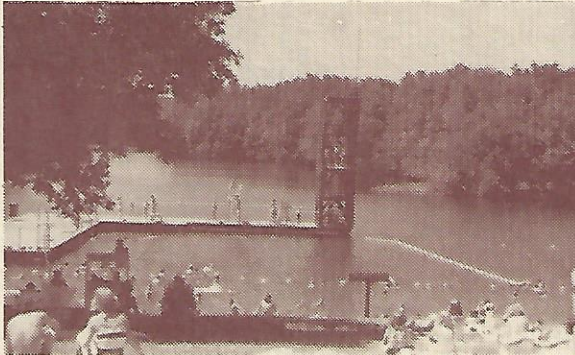
Route 2

Jasonville, Indiana 47438

812-665-2158

TRAIL MAP

Established 1929 1,766 Acres



In 1927-1929, Clay, Greene and Sullivan counties donated, to the State of Indiana, a tract of land consisting of unmanaged forest and abandoned coal mines to be maintained as a state park.

Shakamak owes its name to the Kickapoo Indians, who played a prominent part in the history of this region up to the close of the war of 1812, aiding Tecumseh in his efforts against the United States. The Eel River, which is near the State Park, was called Shakamak by the Indians, which means, "river of long fish" referring to a delicacy of the Indians, the American Eel.

Early residents of the area mined coal from shaft mines, farmed the rich Wabash valley land and operated several mills and brick plants in the area. Brick was plentiful during the time the park was established and is evident by the many buildings and structures that are finished with brick.

In the early 1930s, the Civilian Conservation Corps workers developed much of the park. Trees were planted and erosion control was completed in many areas. Many of the buildings and structures were built by the C.C.C.

Shakamak offers various facilities to make the visitor's stay an enjoyable experience. Picnickers have their choice of several picnic areas. Shelters and fireplaces are located in different areas of the park, with comfort stations and playgrounds nearby.

The wildlife that inhabits Shakamak includes a variety of species adapted to life in the forest and water. Mammals such as white-tailed deer, raccoon, fox squirrel, and red fox are commonly seen by the park visitors along with various birds such as cardinals, nuthatches, bluejays, redheaded woodpeckers and an abundance of waterfowl.

Shakamak is well known for "good fishing" and offers three (3) lakes totaling over 400 acres of water for the anglers to try their luck. Each lake is easily accessible with a boat launch and boat rental is available on all three lakes.

A sand beach located on Lake Shakamak provides swimmers and sunbathers an excellent waterfront. The beach is open from the Saturday before Memorial Day through Labor Day and is staffed with qualified lifeguards. Swimming is allowed only at the beach and only when lifeguards are on duty.

A large group camp with dorms, showerhouse, kitchen and dining facilities is available for groups under adult supervision. Reservations for this facility are handled through the park office.

Family cabins equipped with electric range, refrigerator, showers, modern restrooms, beds and wood burning stoves are available from April 1st to November 1st. There are 29 cabins, 6 sleep 4 people, 22 sleep 6 and 1 sleep 9. These cabins may be rented by the day from April 1st to June 1st and September 1st to November 1st. During June, July and August the cabins are rented by the week only from Saturday 4:00 P.M. to the following Saturday 10:00 A.M. For more information regarding these cabins, please contact the park office.

The staff at Shakamak enjoy being host to all park visitors and they hope your stay is a pleasant one. We welcome you to enjoy, respect and accept this hospitality.

DESCRIPTION OF TRAILS

1. Begins and ends near the beach area and follows generally the shore line of Lake Shakamak. An interesting trail to see waterfowl and shorebirds.
2. Joins with Trail 1, east of the beach parking lot and proceeds through an oak forest and pine plantings, past an abandoned coal mine and returns to Trail 1, south of the group camp.
3. Trail 3 goes through oak woods, along the north shore of Lake Lenape, to the saddle barn. Native white-tailed deer have been observed on this trail.

STAY ON MARKED TRAILS

ACTIVITIES AND FACILITIES

BOATS — State owned boats may be rented by the hour or day. Privately owned boats may be launched on any of the three lakes, a launch ramp is provided at each of the lakes for this purpose. A launch permit is required to launch private boats. Only electric trolling motors, powered by no more than two twelve volt batteries are allowed.

CAMPING — Campground equipped with modern facilities plus handicapped accommodations are available. Occupancy is limited to two (2) weeks. Sites will accommodate both tents and trailers. Electricity is available at campsites and water is readily accessible at different locations throughout the campground.

FAMILY HOUSEKEEPING CABINS For a moderate fee, cabins may be rented April through October. Cabins rent by the week only from Saturday to Saturday during June, July and August. They can be rented by the night with a minimum of two nights on the weekend during the rest of the year. Some of the cabins are available year-round. Cabins may not be rented to children under the age of 19 except when accompanied by a responsible adult. Contact the Property Manager for further information.

FISHING — An Indiana Fishing License is required. All Indiana fishing laws are in effect.

GROUP CAMP — For organized groups under adult supervision. The group camp will accommodate 270 persons and is equipped with a kitchen, dining hall and modern restroom facilities. Write to the Property Manager for information concerning rates and reservations.

HIKING — Several miles of easy to moderate trails through the wooded areas and along the lake shore provide the visitor with a closer contact with the wonders of nature.

PICNIC AREA — Areas are provided throughout the park with tables, grills, toilet facilities, timberform playground equipment and playfields.

TENNIS COURTS — Two double courts are provided on a first come basis and are located at the playground picnic area near the family cabins.

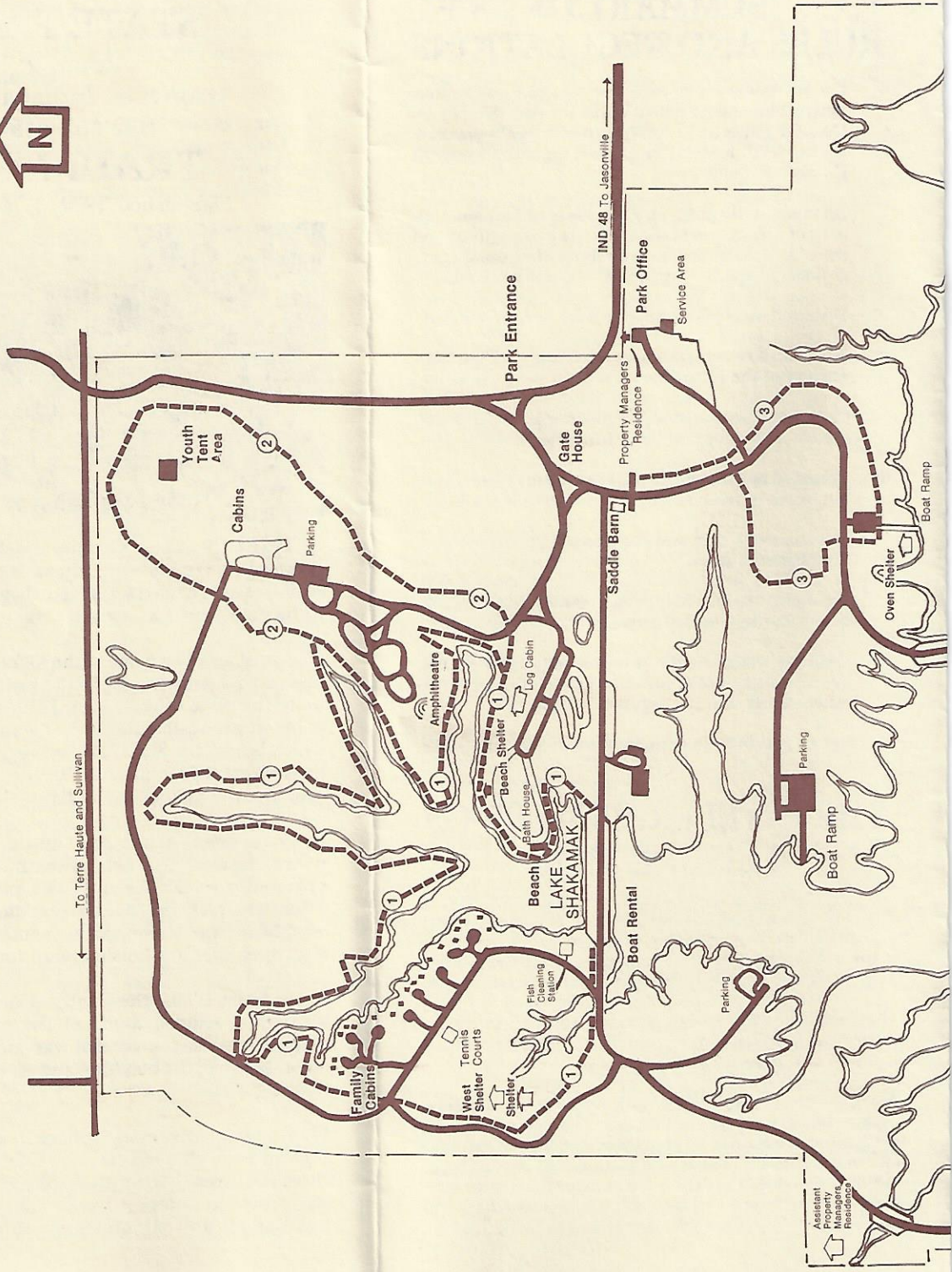
SADDLE HORSES — Miles of bridle trails. Bicycles. Inquire at saddle barn.

SWIMMING — Swimming is permitted only when lifeguard is on duty. Free beach. Bathhouse and beach open Saturday before Memorial Day through Labor Day.

SPECIAL NOTE

Receipts from admission and service charges are used to help defray the operation and maintenance costs of the park. List of fees is available in the park office.

HELP PREVENT FOREST FIRES



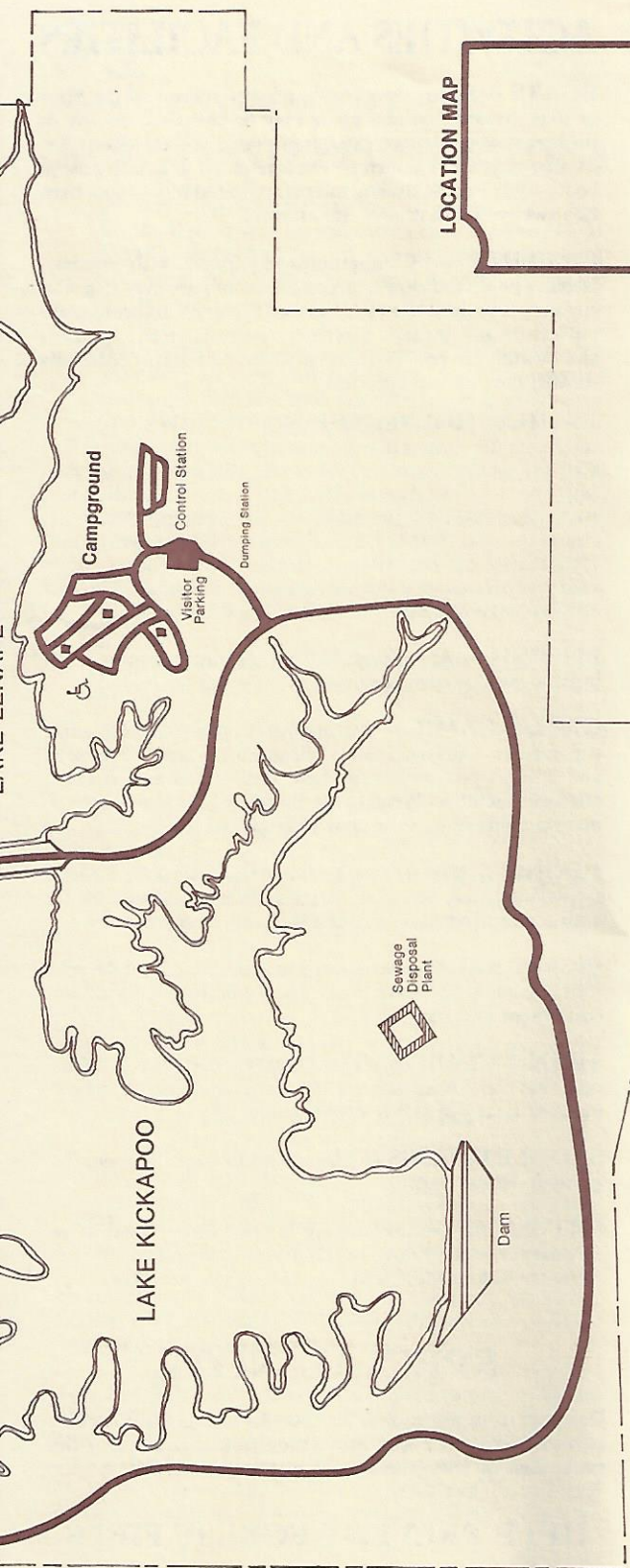
To Terre Haute and Sullivan

IND 48 To Jasonville

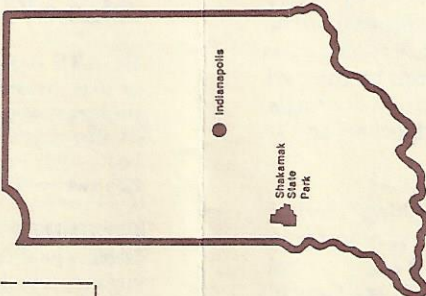
Assistant Property Managers Residence



Boat Ramp



LOCATION MAP



SHAKAMAK STATE PARK

Established in 1929 1766 Acres

TRAIL TABLE

TRAIL	MILEAGE	TRAIL TYPE
1	3 1/4	Moderate
2	1 1/4	Easy
3	1	Moderate

LEGEND

	Park Boundary
	Hiking Trail
	Usable by Handicapped
	Restroom

