



## Museum Shop

The museum shop offers an array of gift items, including authentic Indian weavings, pottery, and baskets, as well as books, catalogues, post-cards, and art posters.

## General Information

**Admission:** Adults, \$2.00; children under 12, \$1.00; senior citizens, \$1.50. Group rates available upon request. Members admitted free.

### Museum and Museum Shop Hours:

Tuesday through Saturday: 10 a.m. to 5 p.m.;  
Sunday: Noon to 5 p.m. Closed Mondays,  
Thanksgiving, Christmas, and New-Year's Day.

**Guided Tours:** Conducted daily at 2 p.m. Group tours pre-arranged for 15 or more. Special rates available.

**Parking:** On site. Special bus parking and drop-off available. Handicapped, complete access.

### Pre-Opening Address:

Eiteljorg Museum of the American Indian and Western Art

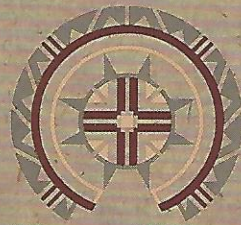
334 North Senate Avenue  
Indianapolis, IN 46204  
(317) 636-WEST



Opening June 1989 at the corner of West and Washington Streets



Produced in cooperation with the Tourism Development Division, Indiana Department of Commerce



# Eiteljorg Museum

American Indian and Western Art

In White River State Park  
Indianapolis, Indiana

Opening June of 1989



## An Exciting Frontier Experience

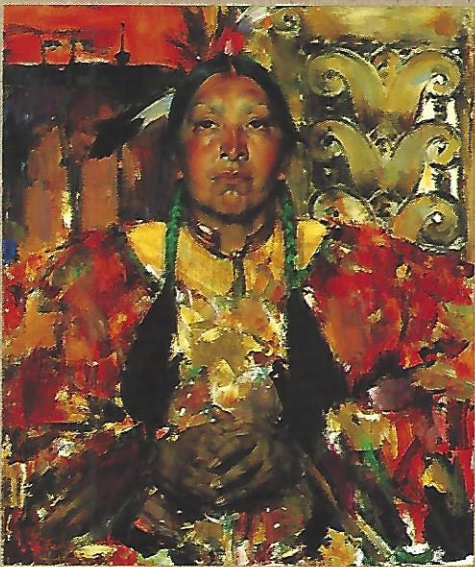
## Museum Programs

All ages can benefit from the museum's many programs. Audio tours and computer and video terminals add new dimension to visitors' knowledge of particular artists, Indian tribes, historical periods, and more. In addition to its regular exhibits, the museum presents several temporary and traveling exhibits each year, and offers special lectures and film series. Craft demonstrations, workshops, and weekend festivals are held on a frequent basis, and special programs for school children are available.

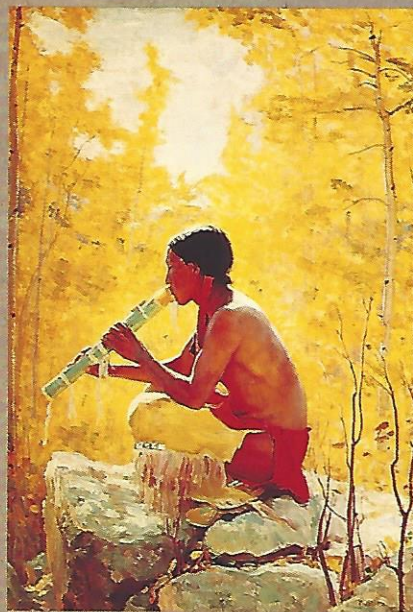


▷ E. Martin Hennings **THE TWINS**

▷ Northwest Coast **FEAST LADLE**



▷ Nicolai Fechin **PIETRO**



▷ Bert Geer Phillips **SONG OF THE ASPEN**

# The West Begins at the Eiteljorg

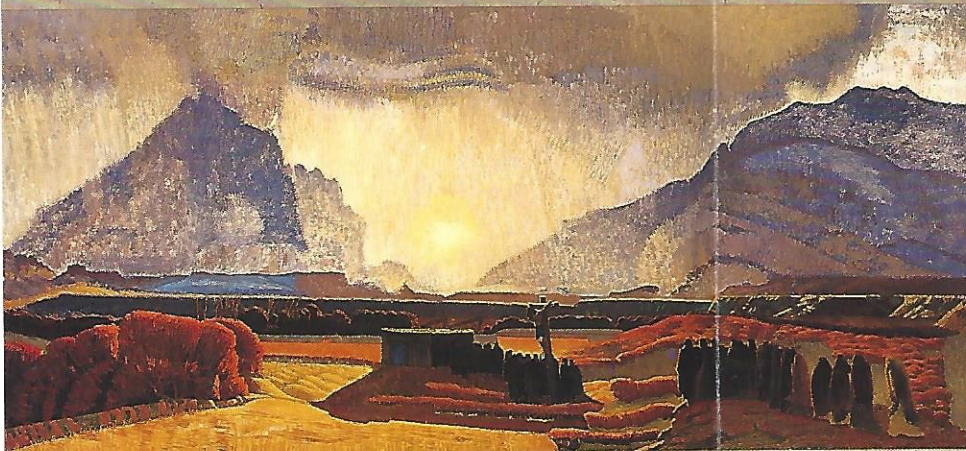
Rediscover your country's heritage at the Eiteljorg Museum of the American Indian and Western Art.

▶ The museum was founded through the collections of Indianapolis businessman and philanthropist Harrison Eiteljorg. After World War II, Eiteljorg's business ventures took him West in pursuit of coal, and while there, he developed a life-long passion for the West and its art.

Through the interpretation of art and artifacts, the museum adds depth and vitality to visitors' appreciation of the American Western experience.



▶ Maynard Dixon THE COW COUNTRY

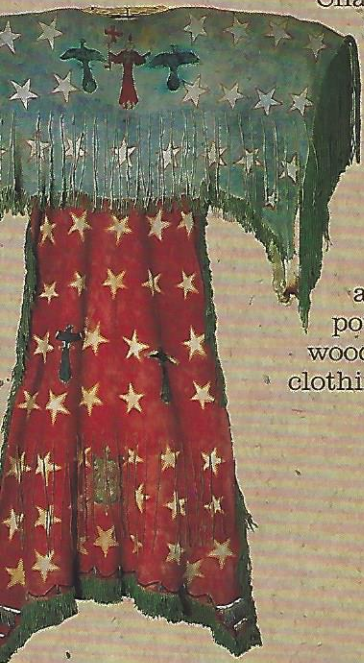


▶ Ernest L. Blumenschein THE PENITENTES

Located in downtown Indianapolis, the Eiteljorg Museum is part of White River State Park. The museum grounds include fountains and sculpture gardens, an open courtyard, and major works by George Carlson, Kenneth Bunn, and Alan Sonfist.

## Collections

The American Western collection spans the early 19th century to the present, and includes paintings, drawings, graphics, and sculpture. The collection is particularly strong in works by members of the original Taos art colony, such as Joseph Henry Sharp, E.I. Couse, Ernest Blumenschein, and Victor Higgins. Also represented are many important Western American artists, including Albert Bierstadt, Frederic Remington, Charles Russell, and Georgia O'Keeffe.



▷ Plains GHOST DANCE DRESS

The Native American collection consists of art and artifacts from throughout North America, and includes pottery, basketry, woodcarvings, and clothing.



▷ E.I. Couse THE WEDDING



▷ Northwest Coast MASK