

**"MACY" NELSON JOINS
MANWARING HATCHERY**

Harold ("Macy") Nelson, for the past six years the Indiana representative for one of Michigan's largest broiler, turkey, and franchise leghorn hatcheries,



has joined Manwaring Leghorn Farms, Mentone, to direct sales and service in Northern Indiana and Western Michigan where Manwaring is the authorized producer, distributor of, KimberChicks.

The photo at the left shows the front cover of Hatchery and Feed Magazine for the month of April. The entire story is told in three full pages of the magazine. The story is illustrated with a number of in-

Manwaring Featured In Trade Journal

Hatchery and Feed

SPECIALIZING IN SALES AND SERVICE



terior photos and a floor plan of the building.

The story was written by Robert L. Hogue, executive secretary of the Indiana State Poultry Association. Mr. Hogue will be remembered by many in this area as he spent many years as manager of the Bashore Feed and Hatchery business in the Silver Lake area.

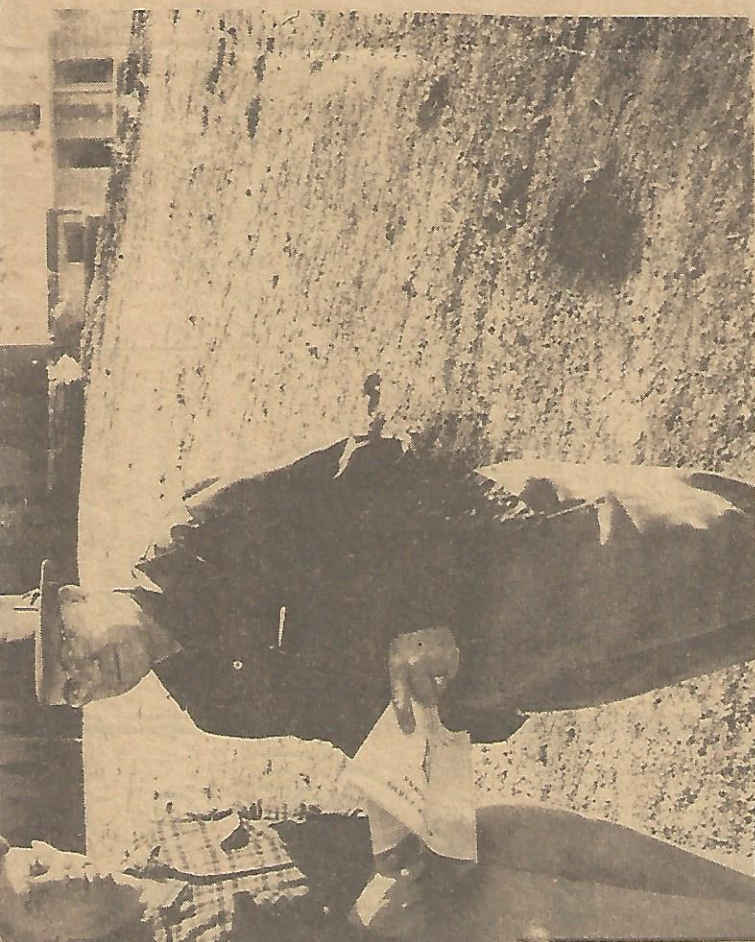
A part of the magazine story follows:

Forty-eight years in the poultry business and enthusiastic, optimistic about the future—that is the Manwaring Leghorn Farm, Mentone, Ind. This firm celebrated its 48th year in business recently by holding an open-house in its new, modern hatchery building covering over 11,000 square feet of floor space.

The Manwaring name has been known in the northern Indiana egg area all of these years. Also, it is known nationally as a former ROP breeder organization producing White Leghorns.

The third generation is actively involved in the current Manwaring operation and the fourth generation is beginning to take an active part.

The business was started in 1911 by Art Manwaring and later his son, Chester Manwaring, past president of the Indiana State Poultry Association, joined him. Three nephews, Charles, Miles and Richard Manwaring then joined the operation and comprise the present management.



Modern New Hatchery at Mentone, Ind., Attests to Manwarings' Confidence in the Future—Above and Page 32

April Is the Month to Promote Animal Health Products—Left and Page 52

May Will Bring National Feed Show and AFMA Convention—Pages 18, 19

19 APRIL 59

S	M	T	W	T	F	S
					3	4
5	12	19	26	27	11	18
					25	

AMERICA'S LIVESTOCK INSTITUTE · SAFEGUARDING ANIMAL HEALTH

ANIMAL HEALTH MONTH