

Bell Memorial Public Library

F E B R U A R Y 2 0 1 7 N E W S L E T T E R

HISTORY OF VALENTINE'S DAY

HOURS OF OPERATION

MONDAY -
THURSDAY
9:00 - 7:00 PM

FRIDAY -
SATURDAY
9:00 AM -
5:00 PM

SUNDAY
1:00 PM -
5:00 PM
(CLOSED SUN.
JUNE - AUG.)

PHONE:

574-353-7234

FAX:

574-353-1307

DIRECTOR
STEPHEN
BOGGS

SBOGGS@BELL.
LIB.IN.US

Every February 14, across the United States and in other places around the world, candy, flowers and gifts are exchanged between loved ones, all in the name of St. Valentine. But who is this mysterious saint, and where did these traditions come from? Find out about the history of this centuries-old holiday, from ancient Roman rituals to the customs of Victorian England.

The Catholic Church recognizes at least three different saints named Valentine or Valentinus, all of whom were martyred. One legend contends that Valentine was a priest who served during the third century in Rome. When Emperor Claudius II decided that single men made better soldiers than those with wives and families, he

outlawed marriage for young men. Valentine, realizing the injustice of the decree, defied



Claudius and continued to perform marriages for young lovers in secret. When Valentine's actions were discovered, Claudius ordered that he be put to death.

Other stories suggest that Valentine may have been killed for attempting to help Christians escape harsh Roman prisons, where they were

often beaten and tortured. According to one legend, an imprisoned Valentine actually sent the first "valentine" greeting himself after he fell in love with a young girl—possibly his jailor's daughter—who visited him during his confinement. Before his death, it is alleged that he wrote her a letter signed "From your Valentine," an expression that is still in use today. Although the truth behind the Valentine legends is murky, the stories all emphasize his appeal as a sympathetic, heroic and—most importantly—romantic figure.

Read more: <http://www.history.com/topics/valentines-day/history-of-valentines-day>

VALENTINE'S DAY FACTS

-141 million Valentine's Day cards are exchanged annually, making Valentine's Day the second-most popular greeting-card-giving occasion. (This total excludes packaged kids valentines for classroom exchanges.)

-Over 50 percent of all Valentine's Day cards are purchased in the six days prior to the observance, making Valentine's Day a procrastinator's delight.

-Research reveals that more than half of the U.S. population celebrates Valentine's Day by purchasing a greeting card.

-2.2 million marriages take place in the United States annually. That breaks down to more than 6,000 a day.

-\$146.84: Average amount Americans will spend on flowers, candy, apparel, jewelry and other gifts on

Valentine's Day.
-\$19.7 billion: Total amount that will be spent on Valentine's Day gifts.
-\$1.7 billion: Amount that will be spent on candy.
-\$1.9 billion: Amount that will be spent on flowers.

Read more: <http://www.history.com/topics/valentines-day/valentines-day-facts>

WE WANT TO KNOW WHAT YOU WANT

What genre would you like to see more of in the library??

Would you be interested in EBooks?!



Email suggestions to Sierra Navarro at snavarro@bell.lib.in.us

NATIONAL WEAR RED DAY



http://honor.americanheart.org/site/TR?fr_id=5042&pg=entry

National Wear Red Day
Friday, February 3,
2017

Why Go Red? Heart disease and stroke cause 1 in 3 deaths among women each year, killing approximately one woman every 80 seconds.

Fortunately, we have the power to change that because 80 percent of cardiac and stroke events may be prevented with education and action.

Raise awareness for the fight against heart disease and stroke!

SWEETHEART CHOCOLATE LOLLIPOPS

Ingredients:

1 pkg. (4oz) Baker's Unsweetened Chocolate
3/4 cup butter
2 cups sugar
1 tsp. vanilla
2 cups flour
1 pkg. (4oz) Baker's White Chocolate
Assorted Valentine Sprinkles

Heat Oven to 350°F

Microwave unsweetened chocolate and butter in large microwaveable bowl on HIGH 2 min. or until butter is melted. Stir until chocolate is completely melted and mixture is well blended. Add sugar; mix well. Blend in eggs and vanilla. Add flour; mix well. Refrigerate 1 hour or until dough is stiff.

Shape dough into 30 (2-inch) balls; insert lollipop stick into

each ball. Place, 2 inches apart, on baking sheets sprayed with cooking spray. Bake 8 min. or just until firm. (Do not overbake.) Let stand on baking sheets 1 min.; transfer to wire racks. Cool completely.

Melt white chocolate as directed on package; drizzle over lollipops. Decorate with sprinkles. Let stand until chocolate is firm.



Prep: 20 min.

Total Time: 2 hours

Servings : 2 1/2 dozen

FAMILY GAME NIGHT



On February 28th from 6-8pm we will have a family board game night in the Bell-X Teen Room!

Families can get out of the house and hang out here at the library with us playing board games and eating popcorn! :D

STRAWBERRY HEART PILLOWS



Ingredients:

- 1 frozen puff pastry sheet (1/2 of 17.3-oz. pkg.), thawed
- 1/3 cup strawberry jam or preserves
- 1 cup thawed COOL WHIP Whipped Topping, divided
- 4 large strawberries, each cut into 4 slices
- 1 oz. BAKER'S Semi-Sweet Chocolate, melted

Instructions:

- Heat oven to 350°F.
- Unfold pastry. Cut into 16 hearts with 2-inch heart-shaped cookie cutter. Place on baking sheet.
- Bake 20 min. or until golden brown. Remove to wire racks; cool completely.

Cut each heart horizontally in half. Spread 1 tsp. jam onto bottom half of each heart; top with 1 Tbsp. COOL WHIP and a strawberry slice. Cover with tops of hearts. Drizzle with chocolate.

Prep: 30 min.

Total Time: 1 hour 20 min.

Servings: 16



KIDS KRAFTS AND FAMILY MOVIE

The BMPL Children's Department has two new monthly events! Kids Krafts will take place every 4th Saturday of the month at 10:00am and is for

ages 6-12! Come join us in making a fun craft every month!!

Family Movie is the first Sunday of every month at 1:00pm!

Parents/Guardians come bring your little ones to spend time together and watch a movie!!

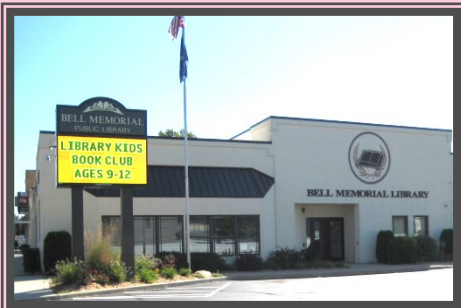


Valentine's Day Party!

Tuesday, February 14th from 5-7pm in the Bell-X Teen Room will be a Valentine's Day party for teens/young adults!

Come eat popcorn and candy, play games on the Wii, board games, color, and more!! :)

BELL.LIB.IN.US



The Library Board of Trustees is looking for a new Trustee. This person must have lived within the area for no less than 2 years.

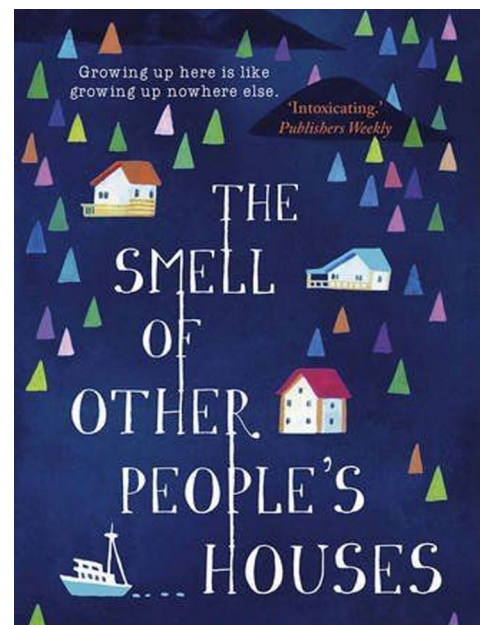
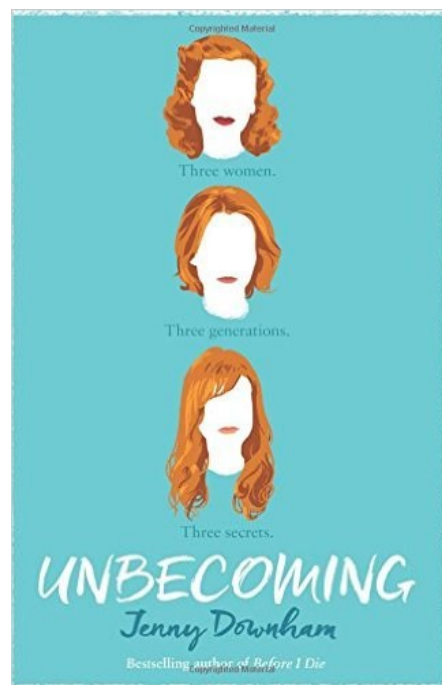
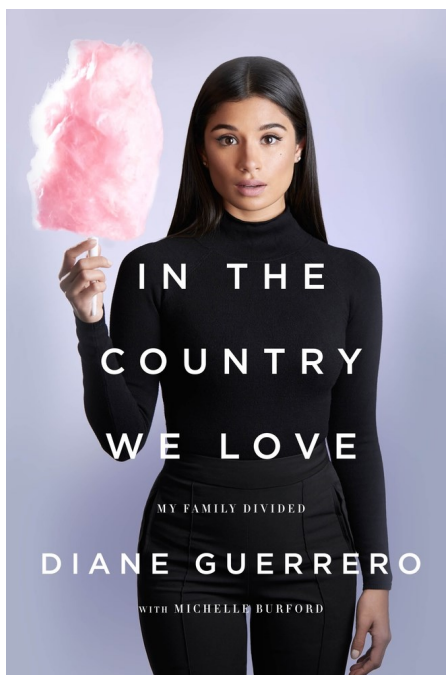
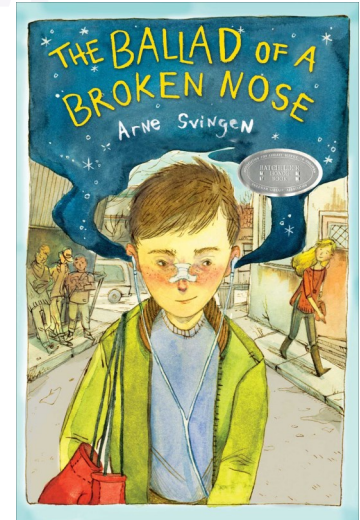
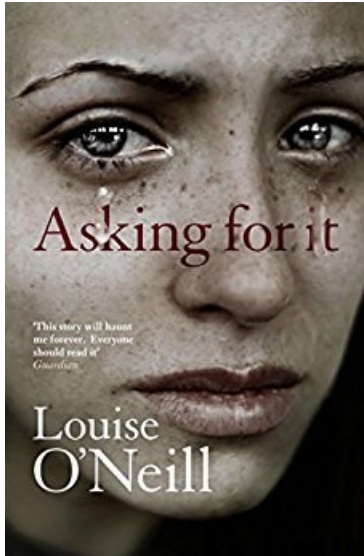
Interested persons contact Stephen Boggs at sboggs@bell.lib.in.us.

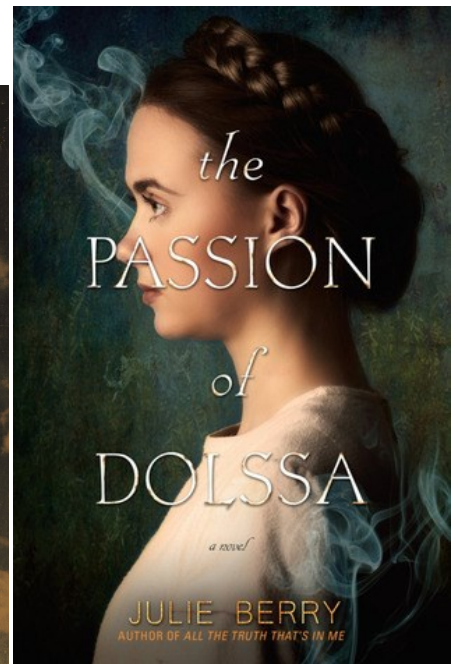
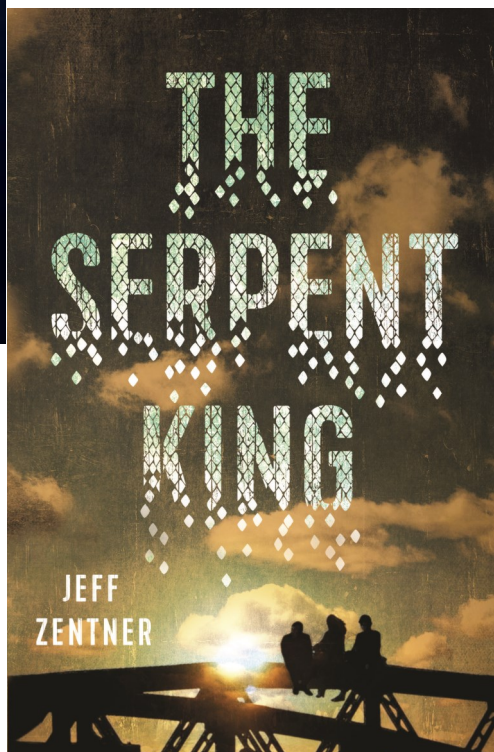
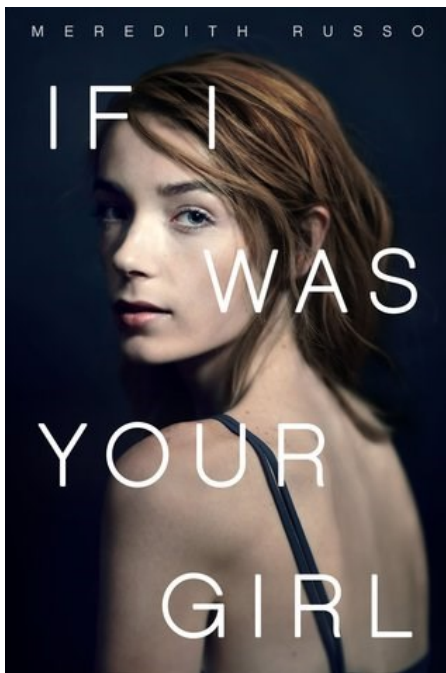
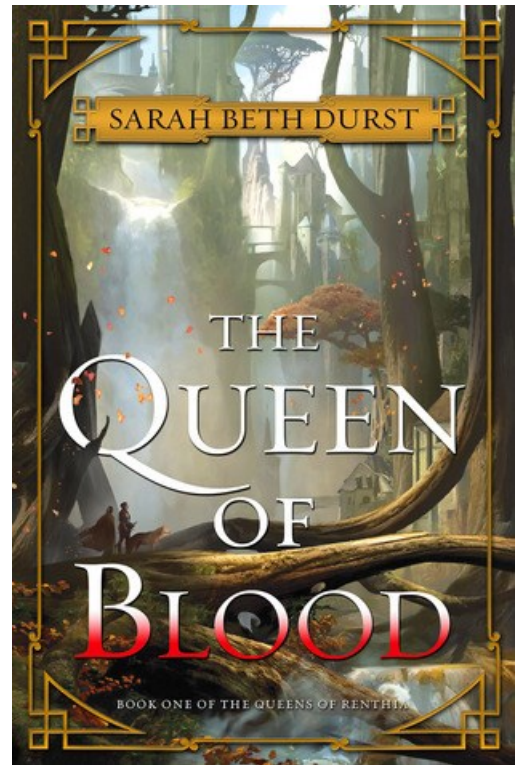
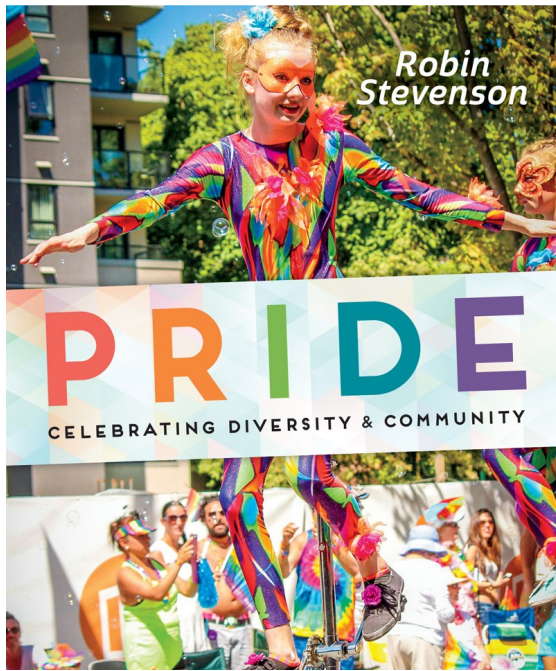
Your Small Town Community Library!!

Here at Bell Memorial Public Library we are dedicated to serving our patrons and our community to the very best we are able! If you ever have any questions or suggestions, need help on the computers, or anything else, we are happy to help in any way we can! It is our privilege and honor to serve the community of Mentone and those who walk through our doors. We have a lot of useful information on our website, as well! Check us out at bell.lib.in.us.

COMING SOON

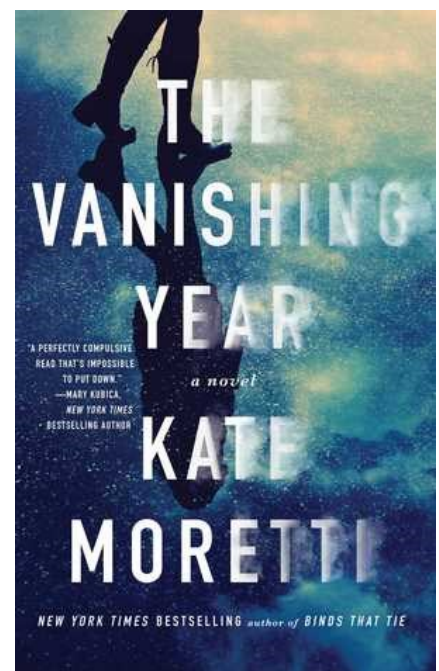
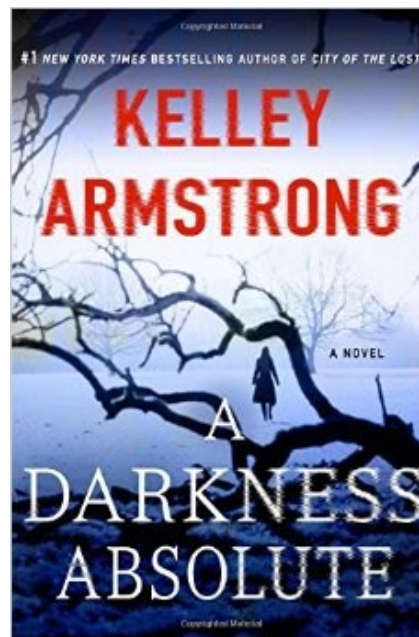
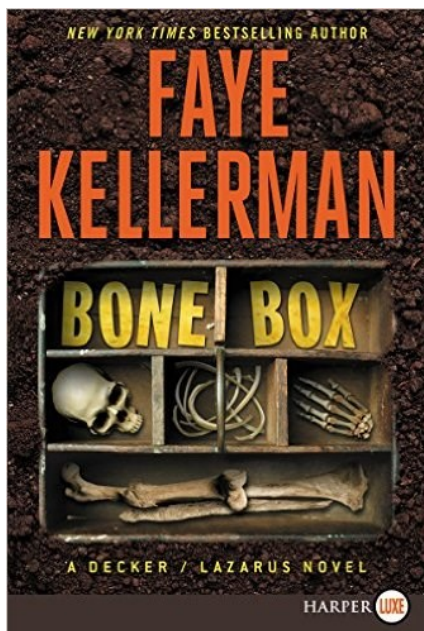
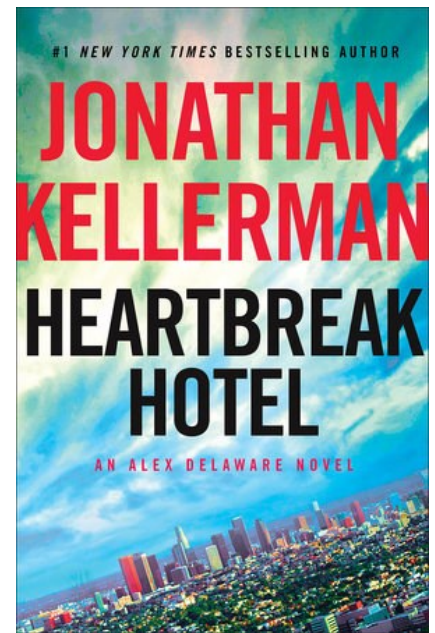
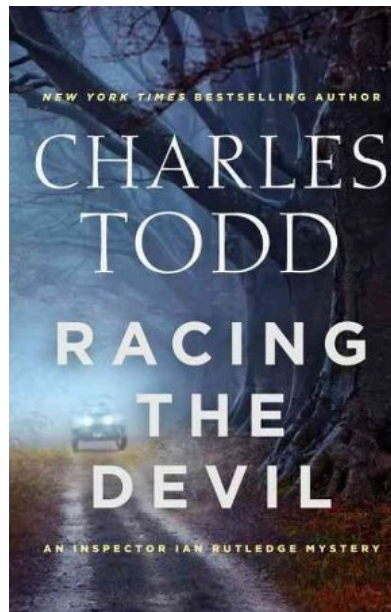
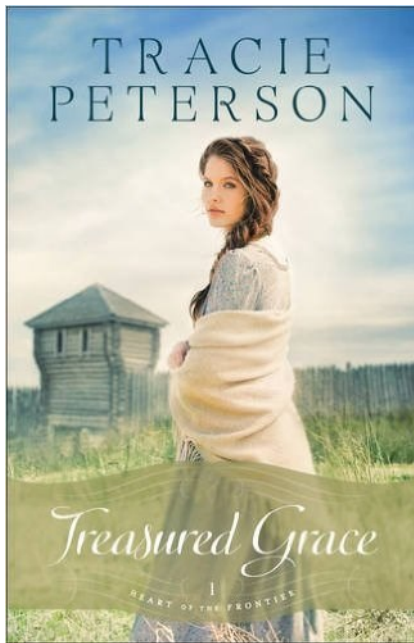
Young Adult Books

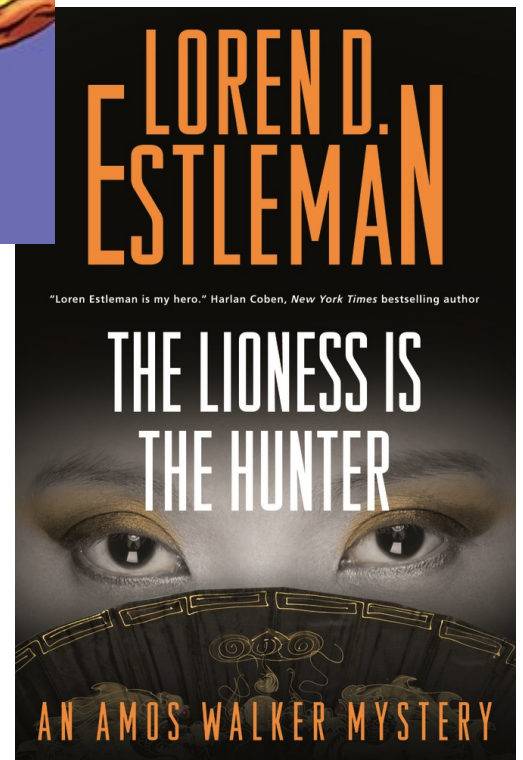
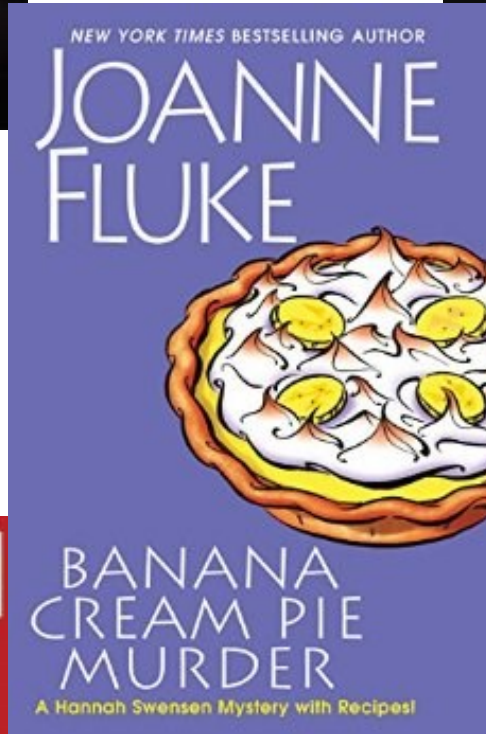
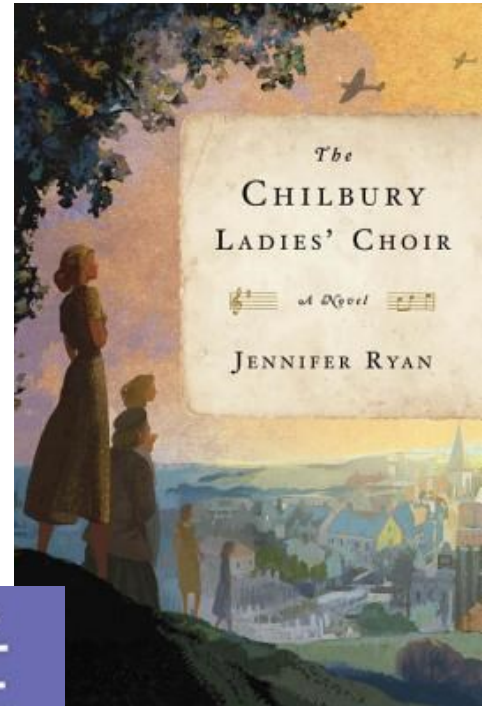




COMING SOON

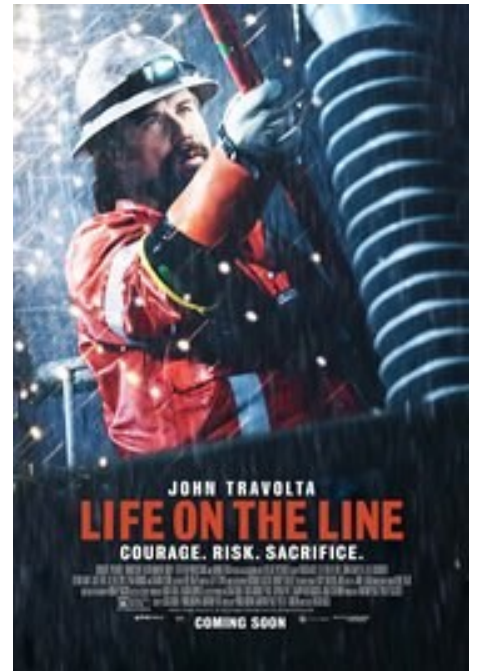
Adult Books

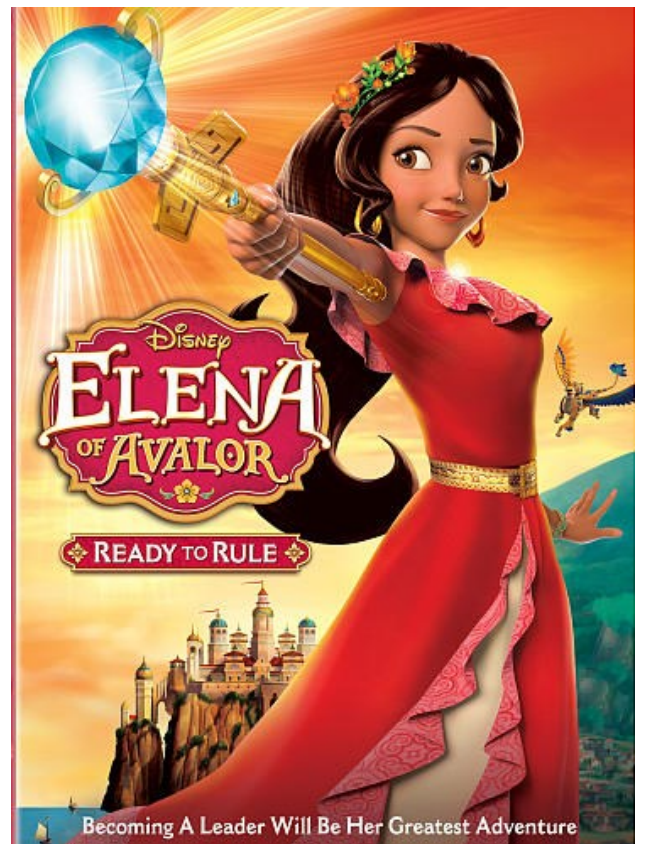
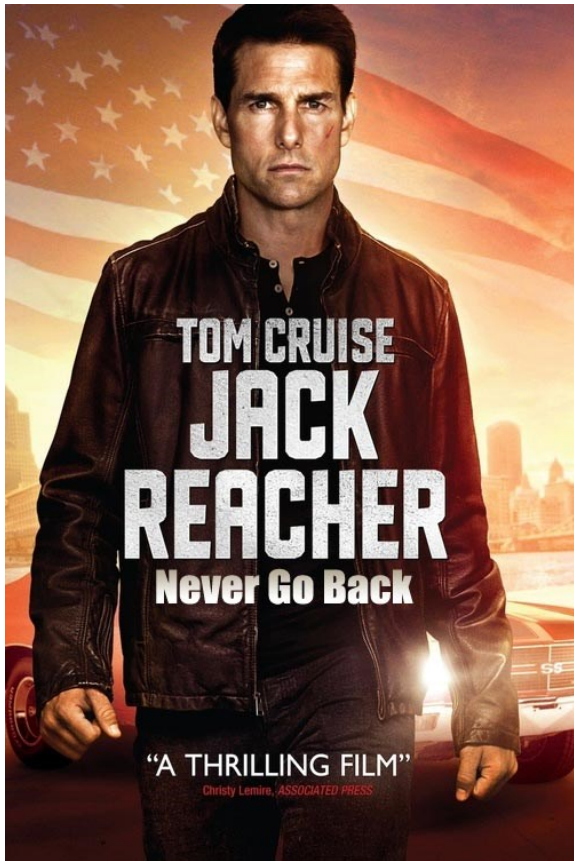




COMING SOON

Movies





Monthly Movie



February 13

1:00pm

February 2017

Sun	Mon	Tue	Wed	Thu	Fri	Sat
			1 Story Time 3:00pm	2	3	4
5 Family Movie @ 1:00pm	6	7	8 Story Time 3:00pm	9	10	11
12	13 Movie @ 1:00pm Sully	14 Teen/YA V-Day Party 5-7pm	15 Story Time 3:00pm	16	17	18 Lego Club 1:00-3:00pm
19	20	21	22 Story Time 3:00pm	23	24	25 Kids Kraft
26	27 Euchre Club 6:00pm Library Board Mtg. 6:30pm	28 Family Game Night 5-7pm				