

PF
Mentone

Lawrence D. Bell Aircraft Museum, Inc.
Mentone, Indiana
presents

The Wall That Heals



September 11 - September 14, 2003
Open continually, 24 hours each day

The Bell Museum and the Town of Mentone, Indiana, has expanded the display of the Vietnam Wall to include a model dioramas of W. W. II, Korea, Vietnam and the Gulf War. Collector Jerry Lindquist, from Miami, Indiana, will display military items from several wars. Among the display will be a WW I helmet, sewing kit, letter home dated 1918, a WW II life jacket, several war posters, c-rations, gas rationing stamps, food stamps, gas masks, military money, Vietnam money, first-aid kits, web harness and models of battles and every day life of soldiers of several wars. This includes a fire base from Vietnam that has bunkers and trenches. The display includes a chopper in a rice field, a MASH model and various other items. There will be no charge for this show and the Town of Mentone has offered their buildings adjacent to the Museum as well as the town park to house these extra events. Additional parking has been arranged at the Baptist Church right next door to the Museum and the Wall and Displays will be available, lighted and guarded 24 hours during the time the Wall is on the Museum grounds.

THE TRAVELING VIETNAM VETERANS
MEMORIAL

Although millions of visitors experience the healing power of the Vietnam Veterans Memorial each year, millions more have not had the opportunity. Many don't have the resources to make the journey. Some may find the war's legacy too painful to confront, particularly as strangers in an unfamiliar city. Others may not yet understand the legacy, or their own connection to it.



The Wall That Heals is a half-scale replica -- exact to the letter and inch -- of the original Vietnam Veterans Memorial in Washington, D.C. It travels across America to cities and towns great and small, speaking, not only of the loss, but also of the lives of more than 58,000 men and women -- our parents, children, neighbors and friends.

One of the unexpected gifts of the Vietnam Veterans Memorial is that it transcends the war in Vietnam to help our nation renew its relationship with veterans of all wars. The number of veterans in society today is much smaller than it was a half century ago. The Vietnam Veterans Memorial has helped all veterans find healing and a powerful connection with the common military experience. Non-veterans, from school children to parents and grandparents, find in The Wall a deeper appreciation of their sacrifice, service, and courage, and draw from the experience lessons for today's life and life in the future.

The Wall That Heals offers another powerful gift to the nation: an opportunity for the souls enshrined on the Memorial to journey back to the places they called home, to exist among friends and family once more, not in a monumental city, but in the comfort and peace of familiar surroundings.

Visitors to the Memorial touch The Wall and touch each other's lives in innumerable ways. The Vietnam Veterans Memorial Fund is grateful for the opportunity to bring The Wall That Heals home to America.

About the Replica

Each of the two walls is approximately 123' long. The walls meet at an angle of 121 degrees and rise to a height of approximately 5' at their vertex. Each of the more than 58,000 names on The Wall is laser-etched nit panels of reflective black, powder-coated heavy aluminum supported by a structural aluminum frame.



A sophisticated database of names and their precise arrangement on the walls had to be created in order to engrave the panels. The database was then linked to a giant computer-operated laser system developed solely for the purpose of engraving the traveling Wall. The system etched image areas of a specific size, requiring remarkably precise calibration across a wide field in order to match partially formed letters and lines.

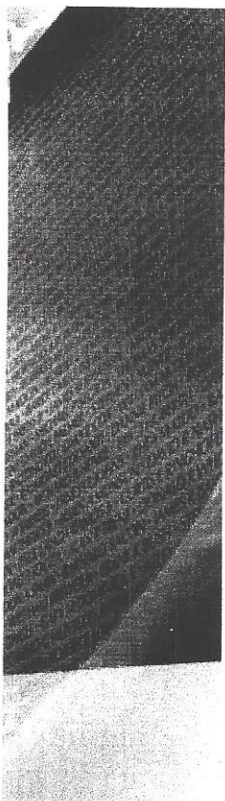
The Order of the Names

The list of names begins at the vertex of the walls below the year of the first

casualty, and continues to the end of that wing. It resumes at the beginning of the opposite wing, ending at the vertex, above the date of the last death.

This meeting of beginning and ending signifies an epoch in American society.

The Wall That Heals is made possible by the Vietnam Veterans Memorial Fund with help from the Veterans of Foreign Wars of the U.S., Winstar Communications, Inc., and Federal Express.



Also See:

- [The Wall That Heals](#), Official Website of the Vietnam Veterans Memorial Fund
- [The Virtual Wall](#), A Digital Legacy Project for Remembrance

For more information:
Orabelle Meredith, Chairperson
6862N 900E
Mentone, IN 46539

Email lawsonfamily@rtcol.com or twstone@medt.com

Perfect Gifts

Statistics & Facts

The population of Mentone is approximately 912.
The approximate number of families is 367.

CarPrices.com

The amount of land area in Mentone is 1.57 sq. kilometers.
The amount of surface water is 0 sq kilometers.
The distance from Mentone to Washington DC is 519 miles. The distance to the Indiana state capital is 96 miles. (as the crow flies)
Mentone is positioned 41.17 degrees north of the equator and 86.03 degrees west of the prime meridian.

Magnetic Water Conditioning

[Return to Index](#)

SPOT AD \$100

Attractions

Mentone attractions:

"The Big Egg"

Mentone is well-known for the large, 3,000 pound concrete egg on Main Street. It is commonly known as the big egg! The local business owners placed the egg in the mid 1940's and had this phrase painted on the egg: "Mentone, Indiana, the egg basket of the Midwest." Mentone is one of the nation's top egg producers.

SPOT AD \$100

The Egg Festival

Held each year in June, you may enjoy activities such as the "egg toss." The Henhouse Five dress up with their giant beaks and chicken feet, then dance up a storm with clucking to the beat!

[Return to Index](#)

Contribute information free or for a small service charge for this community or any other community in the USA

Be sure to include the name of the community and its state when contacting Key to the City as you are NOT directly contacting this community.

Learn how to be a sponsor on Key to the City

Choose a new community in the state of Indiana

Return to the **Key to the City** Home Page.

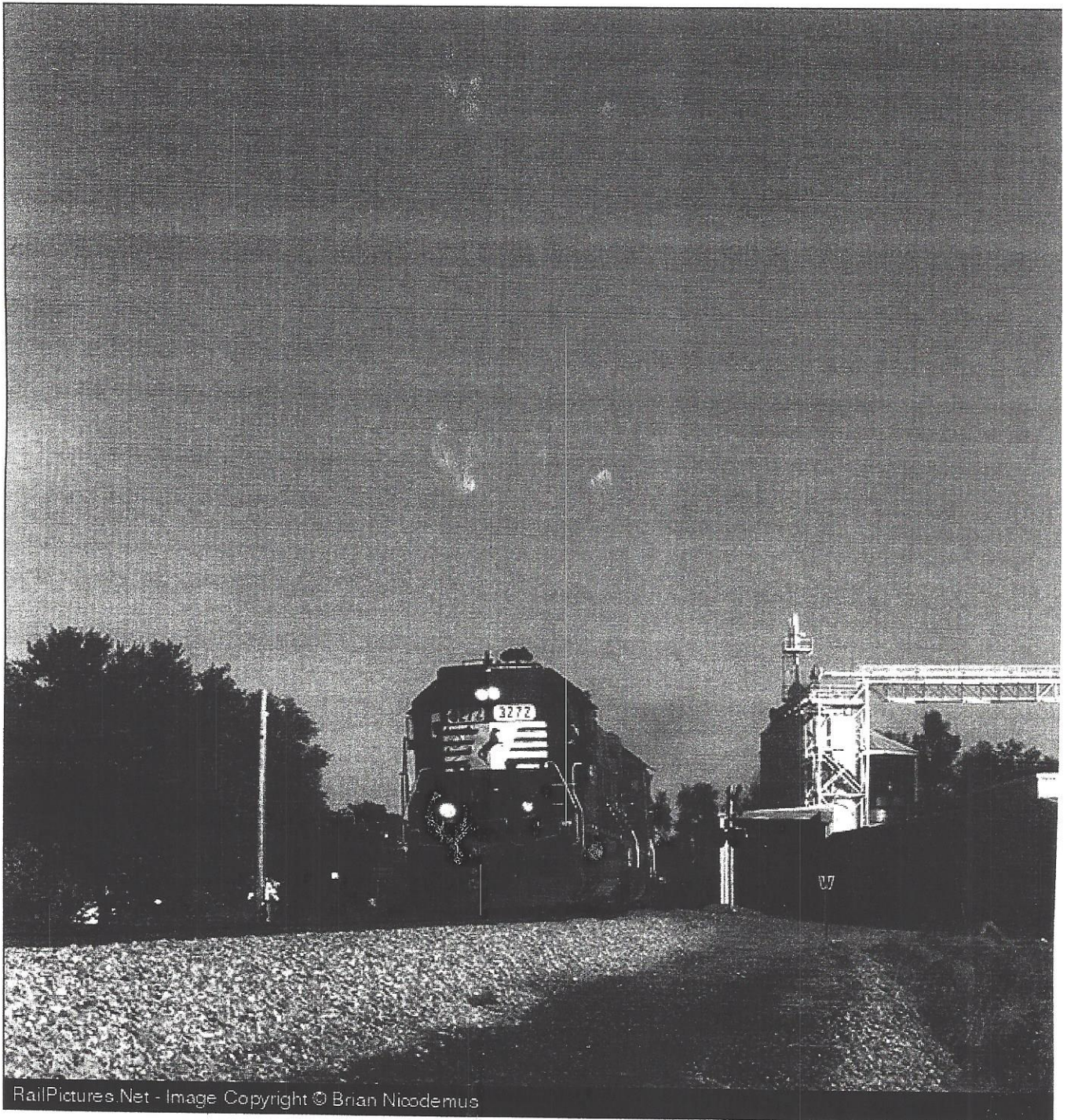
Thanks for visiting **Key to the City**. Come back again! We'll leave the light on for you!

× Advertisement _ □ ×
Your Computer's Data Is Currently At Risk. Download Internet Alert Now.

RailPictures.Net

[Main Page](#) · [Discussion Forums](#) · [Add Photos](#) · [Members](#)

Link to this photo: <http://www.railpictures.net/viewphoto.php?id=1802>



RailPictures.Net - Image Copyright © Brian Nicodemus

Location: Mentone Indiana | Category: Flying



Mentone Airport

Mentone Airport serves Mentone and Kosciusko County and is owned by Popular Rotorcraft Assn. The paved runway extends for 2521 feet. The facility is at an elevation of 860 feet at a distance of about 2 miles from Mentone.

Find similar pages at Flying.

Mentone

Voice Phone
219-353-7227

Search Indiana | Entire Site

<p>Compare 2.1 million apartments and get \$100 back when you lease one.</p>	<p>Fairs, Festivals, and Events</p>	<p>Discount Hotel Rooms</p>	<p>Find and Compare Real Estate Agents</p>	<p>Reserve Your Rental Car</p>
---	--	------------------------------------	---	---------------------------------------

Compare Lodging Rates & Availability in Mentone
Lodging.com and Travelnow each offer a wide range of hotel brands plus specially negotiated bargain rates on thousands of properties.

To Find What You Need in Mentone Use Verizon SuperPages.com

- Airlines
- Airports
- Apartments
- Art Galleries
- Attractions
- Campgrounds
- Hotels & Motels
- Maps
- Museums
- Newspapers
- Real Estate
- Restaurants
- Weather
- Other

FIND IT!

Find Recreation Throughout Indiana With Verizon SuperPages.com

- Boating
- Fishing
- Guest Ranches
- Hunting
- River Trips
- RV Parks
- Sightseeing Tours
- State Parks
- Wildlife Viewing
- Wineries

FIND IT!

Compare 2.1 million apartments and get \$100 back when you lease one. Thinking of moving to Indiana? Check out the Local Real Estate Market. Find and compare Real Estate Agents.

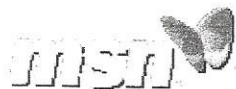
Indiana Real Estate

Oregon Things Look

Room Rates

Availability Online

MSN Home | My MSN | Hotmail | Search | Shopping | Money | People & Chat



Worried about your child on the Web?
Get **ADVANCED PARENTAL CONTROLS** from MSN® 8

Subscribe now!



TerraServer

Advanced Find | Info | Download | Print | E-Mail | Home

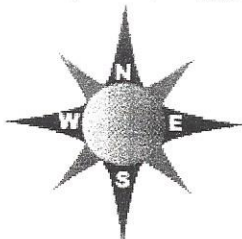
Search TerraServer

Home Image

Search input field with GO button

Navigate

View: Aerial Photo



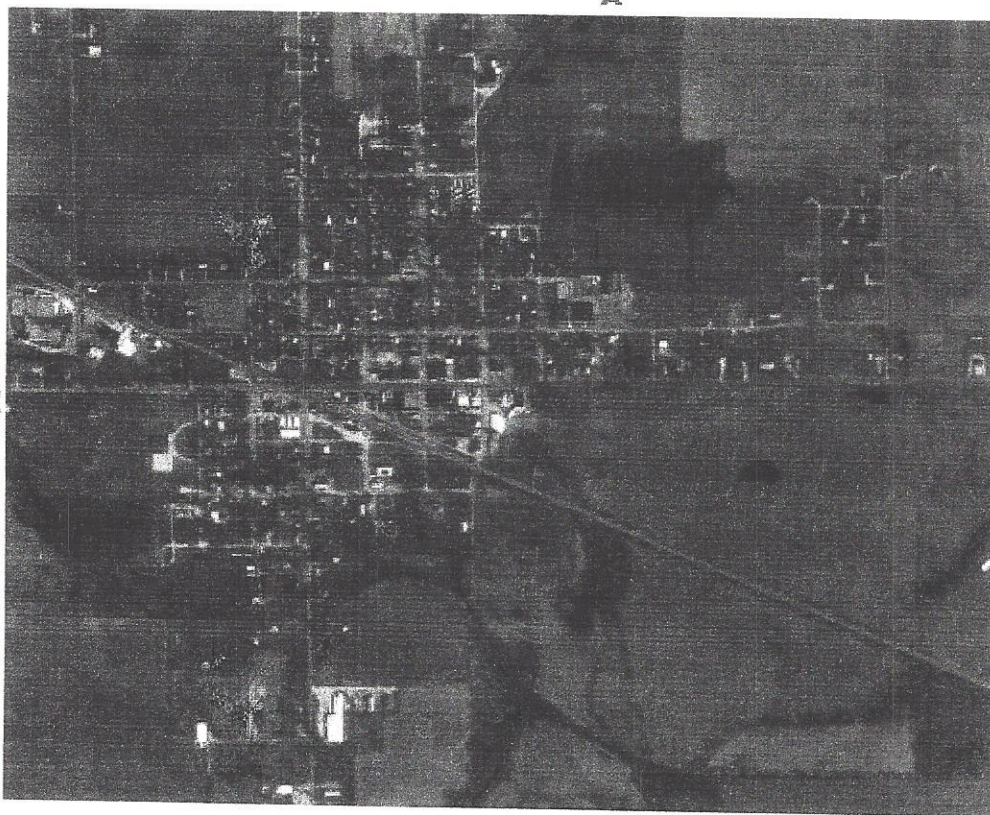
4 meter resolution



Map Size: Medium

- Advanced Find
- Famous Places
- Web Services
- About

Mentone, Indiana, United States 24 Mar 1998 USGS



0 .5Km

0 .25Mi

Related Links:

Other Imagery:

USGS Topo Map 01 Jul 1991

House and Home:

- Homes for sale in 46510
- Homes for sale in 46539
- Schools, Crime and Demographics for 46510
- Schools, Crime and Demographics for 46539

Image courtesy of the U.S. Geological Survey
Source=4108656SE Center=(-86.0320,41.1693) 0ms Running Time

MSN - More Useful Everyday

MSN Home | My MSN | Hotmail | Search | Shopping | Money | People & Chat

© 2002 Microsoft Corporation. All rights reserved. Terms of Use Advertise TRUSTe Approved Privacy Statement GetNetWise

Location: Mentone Indiana | Category: Indiana Cities and Towns



Mentone Indiana

Mentone is located in Kosciusko County within the Northern Region of Indiana on Highway 110 a short distance southwest of Warsaw. The ZIP code for Mentone is 46539.

Find similar pages at Indiana Cities and Towns.

Mentone

Below are additional pages related to this one.

Points of Interest

Mentone Airport

Search Indiana	Entire Site
--------------------------------	-----------------------------

Compare 2.1 million apartments and get \$100 back when you lease one.	Fairs, Festivals, and Events	Discount Hotel Rooms	Find and Compare Real Estate Agents	Reserve Your Rental Car
--	-------------------------------------	-----------------------------	--	--------------------------------

Compare Lodging Rates & Availability in Mentone
Lodging.com and Travelnow each offer a wide range of hotel brands plus specially negotiated bargain rates on thousands of properties.

To Find What You Need in Mentone Use Verizon SuperPages.com

- Airlines
- Airports
- Apartments
- Art Galleries
- Attractions
- Campgrounds
- Hotels & Motels
- Maps
- Museums
- Newspapers
- Real Estate
- Restaurants
- Weather
- Other

FIND IT!

Find Recreation Throughout Indiana With Verizon SuperPages.com

- Boating
- Fishing
- Guest Ranches
- Hunting
- River Trips
- RV Parks
- Sightseeing Tours
- State Parks
- Wildlife Viewing
- Wineries

FIND IT!

Compare 2.1 million apartments and get \$100 back when you lease one. Thinking of moving to Indiana? Check out the Local Real Estate Market. Find and compare Real Estate Agents.

Indiana Real Estate	Room Rates Availability Online
Oregon Things Look	



PLACE SEARCH

Enter a community name:

Search input field with a dropdown menu for State (IN) and a Search button.

[Advanced search](#)

COMMUNITY

[Indiana](#) > [All counties](#) > [Kosciusko County](#) > [Mentone, IN](#)

Mentone, IN

Town

Population 2000: 898

Region: Northern Indiana

Named for Menton,
France

Festivals:

Egg Festival in May-June

TRAVEL ARRANGEMENTS

- [Find nearby airports](#)
- [Book a flight](#)
- [Rent a car](#)
- [Nearby hotels and motels](#)
- [USA Hotel Guide](#)
- [Veterans' travel discount](#)

Tip: For smaller communities without hotels, check nearby community links at right.

MORE INFO

State: [Indiana](#)
County: [Kosciusko County](#)

New window:

- [Map it](#)
- [Weather](#)

NEARBY

[Show nearby places](#)

MOVING

[Moving guide](#)

VISITING

[Visitors guide](#)

SPORTS

[Sports & rec guide](#)

BUSINESS

[Business center](#)

DEATHS

- [Funeral homes](#)
- [Obituaries](#)
- [Charitable donations](#)
- [Flowers](#)

EPODUNK EXTRAS

- [Multimedia](#)
- [Americanisms](#)
- [Claims to fame](#)
- [Festivals](#)
- [Imaginary places](#)
- [Literary quotes](#)
- [Top 10 lists](#)

GENEALOGY

- [Local libraries](#)
- [Nearby historic sites](#)
- [Nearby museums](#)
- [Nearby newspapers](#)
- [Federal depository libraries](#)

Message boards:

- [Ancestry](#)
- [GenForum](#)
- [RootsWeb](#)

Databases:

- [Ancestry - IN data](#)
- [Cemetery records](#)
- [County history catalog](#)
- [Death index](#)

Attractions

- [Museums in or near Mentone](#)
- [Historic sites in or near Mentone](#)
- [Parks near Mentone](#)

Census 2000

- [Mentone population](#)
- [Education, marital status & ancestry](#)
- [Employment, income & poverty](#)
- [Housing values, mortgages & rents](#)
- [County data](#)
- [State data](#)
- [Data by street address](#)

MARKET RESEARCH

- [Demographics](#)
- [Business](#)
- [Retail](#)
- [Spending](#)
- [Consumer behavior](#)

Crime

- [Crime in Kosciusko County](#)
- [Arrests in Kosciusko County](#)

Economy

- [Banks](#)
- [Building permits](#)
- [Business licenses](#)
- [Commuting patterns](#)
- [Corporation search](#)
- [Current labor force](#)
- [Wage estimates](#)
- [County economic census](#)
- [County economic summary](#)
- [County employment](#)
- [County unemployment](#)
- [IN economy](#)

NEIGHBORHOODS

- [Neighborhood crime](#)
- [- Sample report \(pdf\)](#)

Education

- [4-year colleges near Mentone](#)
- [All colleges in Mentone](#)
- [Liberal arts colleges in Indiana](#)
- [Libraries in Mentone](#)
- [Public schools in Mentone](#)
- [Private schools in Mentone](#)
- [School districts in or near Mentone](#)

Environment

- [Air, toxics, waste & water info for Kosciusko County](#)
- [Hazardous waste sites in Kosciusko County](#)

Events

- [Concert tickets](#)
- [IN fair dates](#)
- [IN festival dates](#)
- [Sports tickets](#)

Government

- [Kosciusko County government](#)
- [Indiana state government](#)
- [Driver's licenses](#)
- [Motor vehicles](#)
- [Passports](#)
- [Social Security](#)
- [Veterans affairs](#)
- [Where to write for birth, death, marriage or divorce records](#)

Health

- [Dentists](#)
- [Doctors](#)
- [Eldercare locator](#)
- [Hospice programs](#)
- [Hospitals](#)
- [Hospital accreditation & performance reports](#)
- [Nursing homes](#)
- [Substance abuse treatment facilities](#)

History

- [Historic sites in or near Mentone](#)
- [Historic sites in Indiana](#)
- [Museums in or near Mentone](#)
- [Museums in Indiana](#)
- [Search the Library of Congress collections](#)
- [Search the National Register for historic properties](#)
- [State historical society](#)

Jobs

- [Help wanted ads - newspapers](#)

EMPLOYMENT SERVICES

- [Post job openings](#)
- [Resume writing](#)

Maps & photos

- [Aerial photo of Mentone](#)
- [Census map of Mentone](#)
- [Historic maps of IN cities](#)
- [Historic photos of U.S. cities](#)
- [Mentone regional map](#)
- [Mentone street map](#)
- [Topographic map of Mentone](#)

Moving

- [Moving guide](#)
- [Estimate your moving costs](#)

News

- [Daily newspapers in or near Mentone](#)

GIFTS

- [Care packages](#)
- [Cookies](#)
- [Flowers](#)
- [Fruit](#)
- [Gift baskets](#)
- [Gourmet meals](#)
- [Plants & wreaths](#)

REGIONAL SPECIALTIES

- [Florida citrus](#)
- [New England chowders](#)
- [Vermont cheeses](#)

FEEDBACK

- [Send us your corrections and additions](#)

[Today's news around Indiana](#)

Organizations

[Chambers of commerce in Indiana](#)
[Community foundations \(by state\)](#)
[Foundations \(by name\)](#)
[Nonprofit groups](#)

Postal Service

[Find a post office](#)
[ZIP codes \(by street address\)](#)
[ZIP codes \(by city\)](#)
[ZIP code reverse lookup \(find cities in a ZIP code\)](#)

Recreation

[Campgrounds near Mentone](#)
[Golf course search](#)
[National parks in Indiana](#)
[Parks near Mentone](#)
[State parks in Indiana](#)

SPORTS

[Sports & rec guide](#)

Religion

[Churches, other places of worship in Mentone](#)

Travel

[Airports near Mentone](#)
[Book a flight](#)
[Bus stations \(Greyhound\)](#)
[Hotels, motels & resorts near Mentone](#)
[Gas prices](#)
[Traffic info & road construction](#)

Utilities

[Cable companies near Mentone](#)
[Electric companies](#)
[Gas companies](#)
[Propane dealers](#)
[Telephone](#)

White pages

[People finder](#)
[Reverse phone lookup](#)



Category (Browse)

or Business Name

City

State (required)

AK

Find It

Yellow pages

[Accommodations](#)
[Antiques](#)
[Auto repair](#)

[Child care](#)
[Flowers](#)
[Gift shops](#)
[Grocery stores](#)
[Restaurants](#)
[Shopping malls](#)
[Theaters](#)

Alphabetical list of IN community profiles

[COMMUNITIES](#) | [COUNTIES](#) | [AIRPORTS](#) | [COLLEGES](#) | [MUSEUMS](#) | [NEWSPAPERS](#) | [POST CARDS](#)

Google™

Google Search

Search WWW Search epodunk.com

Note: Google does not include everything in the ePodunk database. If you don't find what you're looking for, try the [advanced search](#).

[Help](#) | [Terms of use](#) | [Sources](#) | [Contact](#) | [About us](#) | [Advertise](#) | [Links](#) | [Site index](#) | [Home](#)

Powered by ePodunk (tm)
Copyright © 2003 ePodunk Inc. All rights reserved.

ePodunk profiles communities, counties, colleges, school districts, museums and other places across the United States. As owner of the data presented on this site, ePodunk is not affiliated with any entity represented in its databases. ePodunk also provides links to Web sites presented by government agencies, newspapers, ski areas, inns and other enterprises. The company is not affiliated with these sites, nor is it responsible for their content. Post cards are vintage images, dating from the early 1900s. They are not intended to depict current views.

U.S. Census Bureau American FactFinder

[Main](#) | [Search](#) | [Feedback](#) | [FAQs](#) | [Glo...](#)

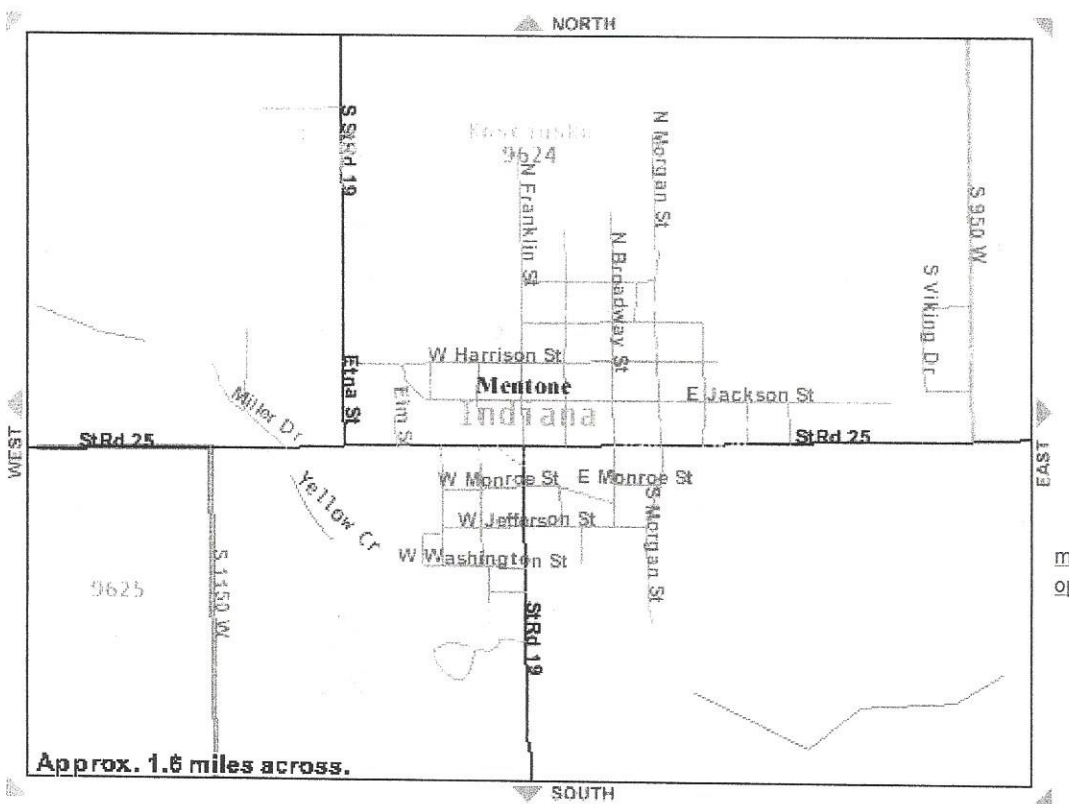
Reference Maps

[Options](#) [Change Selections](#) [Print / Download](#)

- Select an option, then click on the map
- recenter
- recenter and zoom in
- [Go to selection](#)
- [Quick tips](#)

Legend

- Boundaries**
- State
 - '00 County
 - '00 Census Tract
 - '00 Block Group
 - '00 Block
 - '00 Place
 - '00 Urban Area
 - '00 Urban Area
- Features**
- Major Road
 - Street
 - Stream/Waterbody
 - Stream/Waterbody



To reposition the map...

- enter an **address** or a zip code and click 'Go'

Street Address [Quick tips](#)

City State Zip Code

Or...

- enter a **latitude/longitude** coordinate and click 'Go'

Latitude (e.g. 39.926) Longitude (e.g. 83.796)

Locomotive Details

- » Norfolk Southern ([more..](#))
- » EMD SD40-2 ([more..](#))

Location/Date of Photo

- » MP 420 NS Chicago District ([more..](#))
- » Mentone, Indiana, USA ([more..](#))
- » September 11, 2002

Locomotive No./Train ID

- » NS 3272 ([more..](#))
- » NS 307 ([more..](#))

Photographer

- » Brian Nicodemus ([more..](#))
- » [Contact Brian Nicodemus](#)

Remarks: One year after tragedy struck America an NS westbound passes old glory on Mentone's tallest tower.

Do you see any errors or inconsistencies in the data presented above? If so, please use our [Correct Photo](#) form to file a correction!

This photo has been viewed **13** unique times since being added to the database on December 31, 2002.

User Comments (0)[\[Show Comments\]](#)

There are **0** comments for this photo. [Click Here](#) to add the first comment!

Photo Copyright © 2002 Brian Nicodemus. All Rights Reserved. [Photo Usage Policy](#)

This website Copyright © 2002-2003 [RailPictures.Net](#). All Rights Reserved.