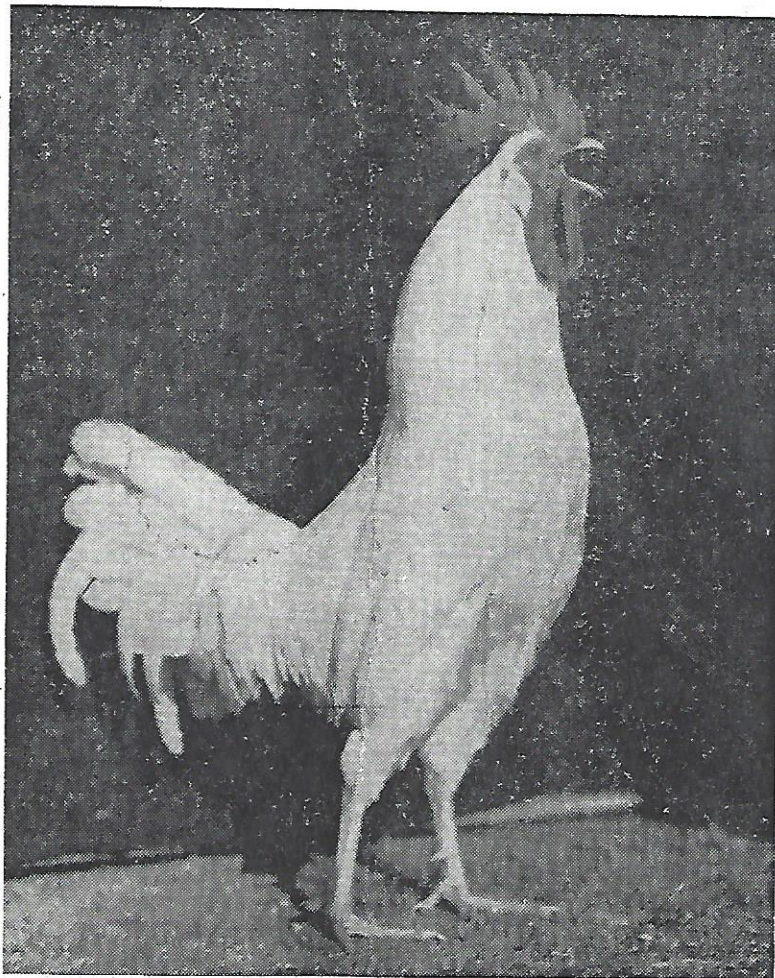


ANNOUNCING . . .

THE FIFTH ANNUAL

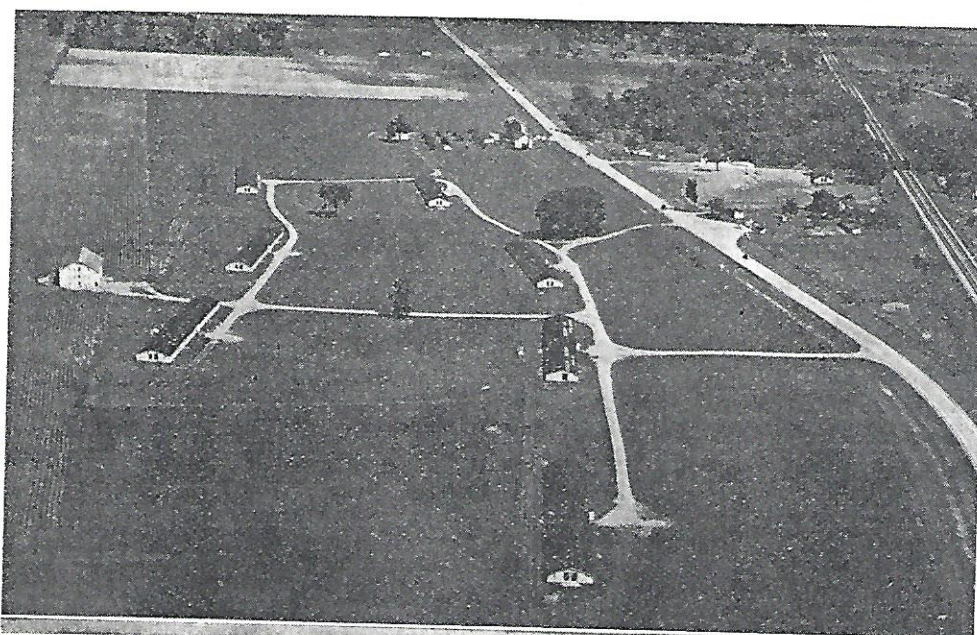
Mentone Egg Show



April 24, 25 and 26, 1940

AT THE COMMUNITY BUILDING

MENTONE, INDIANA



CREIGHTON BROS.

From a very meager beginning 15 years ago our White Leghorns have built America's largest Record of Performance breeding farm. Hundreds of hatcherymen each year come to us for pedigreed chicks with which to improve the flocks from which they buy eggs. Several of America's prominent breeders have come to us for male birds to head their best special matings. Several hundred commercial poultrymen come to us each year for the chicks which later develop into profitable layers.

We are very proud that about 80% of our chicks stay in the Mentone-Warsaw area.

Our hatching capacity of 180,000 is kept busy from January until May, hatching U. S. Certified and U. S. R. O. P. chicks.

Competition in the commercial egg business is getting very keen. In order to succeed today, one has to have well bred stock. We are very proud to number among our customers many of Kosciusko County's best poultrymen.

We have endeavored to cooperate with our fellow poultrymen in any enterprise which is to the benefit of our industry. We shall be glad to discuss with you your poultry problems and sincerely invite you to become one of our large family of customers. Send for free catalog.

BREEDERS OF
WHITE LEGHORNS
 ●
IN R. O. P. 10 YEARS
 ●
IN 1939 AVERAGE
PRODUCTION 258
EGGS
 ●
AVERAGE EGG SIZE
 26.01 OZ.
 ●
AVERAGE BODY
 WT. 5.18 LB.

CREIGHTON BROTHERS

R. R. 5, Warsaw, Ind.

America's Largest R. O. P. Breeders

Telephone Atwood 512

Trophies



Creighton Bros. Rotating Trophy given for highest scoring dozen in class.



Kurtin & Kurtin Rotating Trophy given for highest scoring dozen in classes 6-7-8-9.



Kurtin & Kurtin Rotating Trophy given for highest scoring dozen in the show.



Beeson Egg Farm Rotating Trophy given to school whose students win most points in class 6-7-8-9.

Schedule One 6 points

Schedule Two 5 points

Schedule Three 4 points

Schedule Four 3 points

Schedule Five 2 points

One Point for Each Entry.



Swanson's Hatchery Rotating Trophy given to vocational agricultural department whose student exhibits the highest scoring dozen in class 8.



Silver Lake Egg Farm and Hatchery Rotating Placque given to school whose students place the highest in egg and poultry judging.

SPONSORS — TRIP AWARDS IN CLASSES 3-4-5-6-7-8-9.



Beeson Egg Farm

Nelson's Plain View Egg Farm

Creighton Bros.

Swanson's Hatchery

Manwaring White City Egg Farm

Bashore Silver Lake Hatchery

Merkle Poultry Farm

Kesler's Hoosier Egg and Fruit Farm

Nellans' Twin Pine Farm