



**BELL MEMORIAL IN MENTONE**—Housed in the Bell Memorial Library is the Bell Museum. The models of aircraft which dominate the display are models of the Bell Aircraft Corp.,

most of which were planned by the one time Mentone schoolboy, Lawrence Bell. Some were not fully developed until after his death. The display also includes a bronze bust of Bell which is displayed in a

pos  
tov  
the  
bet

# Times-Union Area News

Mrs

ing  
sus-  
eci-  
re-  
and  
ac-

e of  
te is  
rcuit  
t to  
and  
at  
of  
wid-  
ida-  
fol-  
d in

east  
Kin-  
rsaw.

F the  
quar-  
North,  
is and  
hence  
west  
, less  
cribed  
north-  
south  
st 50.9  
ie west  
th line  
west 1  
aining  
leaving  
(14½)

t ¼ of  
Range 5  
es.  
state will  
open bid-  
parcel must  
appraised  
s will be  
, or bid-  
complete  
date suf-  
ings, or in  
insurance.  
s will be  
f the Kos-  
to Parcel  
tely to the  
to Parcel  
ject to the

and Donald  
isrators  
DAMAN &  
isrators  
f 10-17



dition of honor in the corner of the museum. The  
nspeople say they will never forget Lawrence Bell,  
same as Bell never forgot Mentone. Susan Tib-  
s, at left, assists in the library. She is the daughter

of Mr. and Mrs. James Tibbets. Pictured at right in  
front of the display case in the museum is Mrs. Pearl  
Lackey, librarian for the past 19 years.—(Times-  
Union Photos by Rudicel).

When  
wer-

TB  
Once  
vely  
apa-  
dis-  
ight

chil-  
am-  
ates  
the  
oop-

meeting was in charge of the lesson on "Program Planning  
ing" was

the verse on a Valentine they  
had received

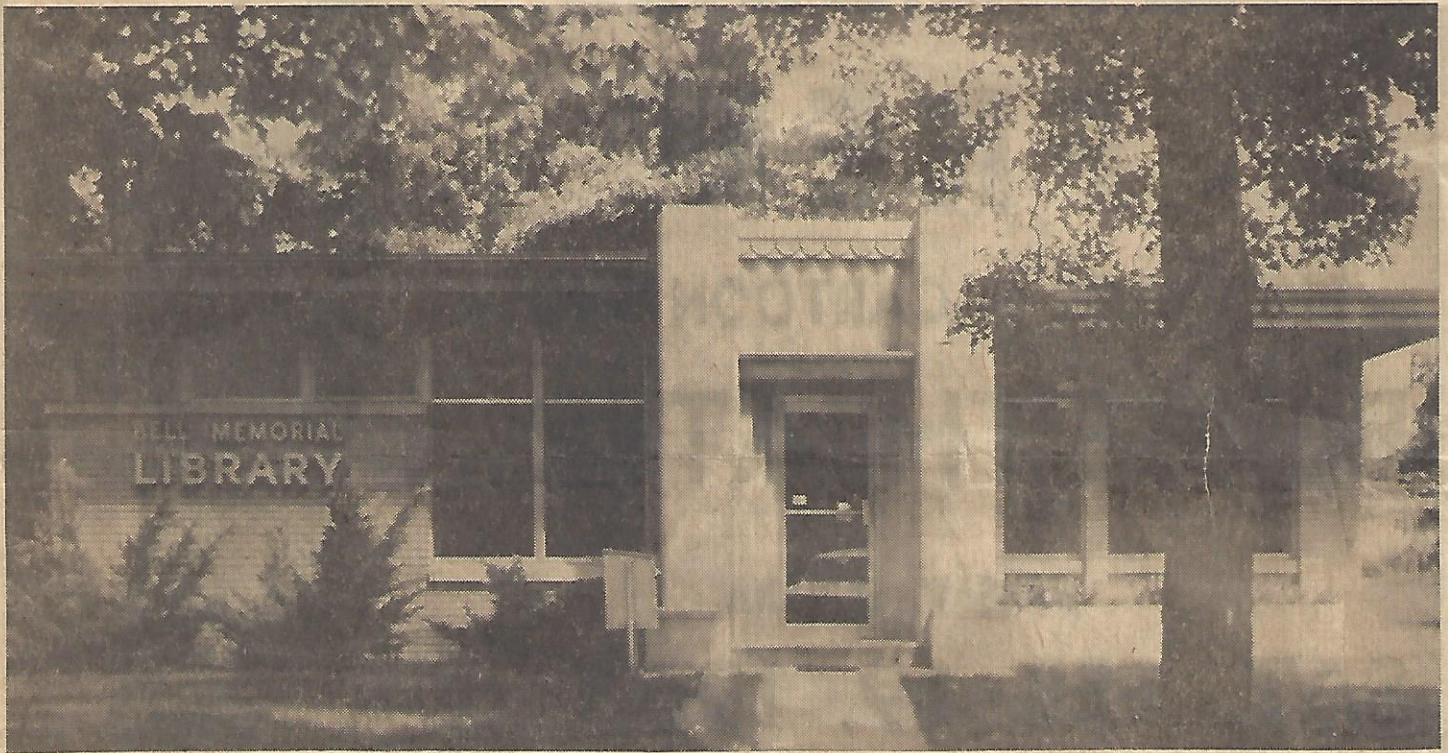
# HEY KIDDIES!

# FREE

## BIG STAGE & CARTOON SHOW



# Times-Union Area News



**PLACE TO VISIT IN MENTONE**—One of the interesting places to visit in Mentone is the Bell Memorial Library. The funds for a memorial in

the town was provided by the late Lawrence Bell, a famous name in the aircraft industry. Bell was a native of Mentone.

## Bell Memorial Library Focal Point In Mentone

**MENTONE** — The Town of Mentone is the possessor of a beautiful and up-to-date library through the generosity of a former townsman and the far-sightedness of an alert Town Board.

The Bell Memorial Library, named in memory of the late Lawrence Bell, a Mentone native and dedicated to his parents, I. E. Bell and Harriet Sarber Bell, is housed in a building designated by the town of-

officials as a memorial. In 1960, funds for a memorial building were given by the Bell estate to the town of Mentone and the board approved the decision to use it for a public library.

The Mentone Library originally was housed in a rented building on the north side of Main St. in 1916. The town later purchased a building on the south side of Main and the library remained in that location until 1959 when it moved into its present location. Dedication services in 1960 made the Mentone Public Library officially "The Bell Memorial Library." The gift from Lawrence Bell and the sale of the old library building made the present building a focal point of Mentone.

### 3 TOWNSHIPS, TOWN

Three townships support the library, Harrison, Franklin and Seward, in addition to the town of Mentone.

In addition to serving the

The Bell Memorial Library is governed by the Library Board of Trustees. Members appointed for 1966 include Robert Janes, president, Mrs. Ora McKinley, vice president, Mrs. Tom Fugate, treasurer, Mrs. Robert Whetstone, secretary, Kenneth Romine, William Ettinger, and Mrs. Iris Anderson.

## Collect \$6,227 For County TB

Mrs. Achiel Van Marcke, executive secretary of the Kosciusko County Tuberculosis Assn.,

M  
H  
M  
M  
Hon  
its  
hom  
with  
ing.  
Th  
Ho

**PLACE TO VISIT IN MENTONE**—One of the interesting places to visit in Mentone is the Bell Memorial Library. The funds for a memorial in

the town was provided by the late Lawrence Bell, a famous name in the aircraft industry. Bell was a native of Mentone.

# Bell Memorial Library Focal Point In Mentone

**MENTONE** — The Town of Mentone is the possessor of a beautiful and up-to-date library through the generosity of a former townsman and the farsightedness of an alert Town Board.

The Bell Memorial Library, named in memory of the late Lawrence Bell, a Mentone native and dedicated to his parents, I. E. Bell and Harriet Sarker Bell, is housed in a building designated by the town of-

officials as a memorial. In 1960, funds for a memorial building were given by the Bell estate to the town of Mentone and the board approved the decision to use it for a public library.

The Mentone Library originally was housed in a rented building on the north side of Main St. in 1916. The town later purchased a building on the south side of Main and the library remained in that location until 1959 when it moved into its present location. Dedication services in 1960 made the Mentone Public Library officially "The Bell Memorial Library." The gift from Lawrence Bell and the sale of the old library building made the present building a focal point of Mentone.

### 3 TOWNSHIPS, TOWN

Three townships support the library, Harrison, Franklin and Seward, in addition to the town of Mentone.

In addition to serving the Mentone school, the library also serves the Burket school. Summer reading programs have also been established for the students. Total circulation of the library for 1965 was listed at 37,704 with book stock of the library listed at 18,913 volumes.

### VETERAN LIBRARIAN

Mrs. Walter (Pearl) Lackey is the mainstay of the Mentone public library. Mrs. Lackey has served as librarian since 1947. She is assisted in her duties by one adult assistant librarian, Mrs. David Bowser, and three high school students, Susan Tibbets, Ann Rush, and Cindy Alsworth. Mrs. Dove Kurcher serves as the custodian.

The Bell Memorial Library is governed by the Library Board of Trustees. Members appointed for 1966 include Robert Janes, president, Mrs. Ora McKinley, vice president, Mrs. Tom Fugate, treasurer, Mrs. Robert Whetstone, secretary, Kenneth Romine, William Ettinger, and Mrs. Iris Anderson.

## Collect \$6,227 For County TB

Mrs. Achiel Van Marcke, executive secretary of the Kosciusko County Tuberculosis Assn., today announced that \$6,227.82 has been contributed to the Christmas Seal campaign.

She stated that any contributions received at her office in the courthouse before March 31 will be added to this year's campaign funds.

A report by township chairmen shows the following amounts donated by townships: Clay, \$202.50; Etna, \$70; Franklin, \$176; Harrison, \$159; Jackson, \$127.50; Jefferson, \$120.50; Lake, \$233; Monroe, \$82; Plain, \$326.50; Prairie, 104; Scott, \$133.75; Seward, \$209.50; Tippecanoe, \$317.50; Turkey Creek, \$343; Van Buren, \$143; Washington, \$263; Winona, \$234, and Wayne, \$2,983.07.