

6. Fires shall be built only in places provided. Visitors must put waste in receptacles provided for that purpose.
7. Motorists will observe speed limits as posted, and park in designated areas.
8. Swimming in the Wabash River is prohibited. Take no risks!
9. Drinking water should be taken only from hydrants or fountains provided for that purpose. This water supply is tested regularly for purity.
10. Report lost and found articles to the property manager.
11. Use of metal detectors prohibited.
12. Horses allowed in Locust Knoll picnic area and designated horse trail ONLY.
13. Park closes from 11:00 PM until 7:00 AM, and no one is allowed in the park, except for campers using their sites between these hours.

Please let wild animals remain wild. Feeding can result in harm to both the animal and human. Animals who depend on handouts have become a nuisance to park visitors and danger to themselves. Please lock up all food and coolers inside cars or campers. Roll car windows up tightly.

### SPECIAL NOTE

**Receipts from admission and service charges are used to help defray the operation and maintenance costs of the park. List of fees available in the park office.**

The programs, services, facilities, and activities of the Indiana Department of Natural Resources are available to everyone without regard to sex, creed, color, or national origin.

## THE INTELLIGENT USE OF LEISURE TIME

This map is given to you with the compliments of the State of Indiana through its Department of Natural Resources in the hope that it will direct your attention to the primary purpose for which the state park system has been established.

These recreational areas are part of "Original America," preserving for posterity typical primitive landscapes of scenic grandeur and rugged beauty.

While visiting this state park, it is to be expected that the average citizen will find release from the tension of their overcrowded daily existence; that the contact with nature will refocus with a clearer lens their perspective on life's values and that they may here take counsel with themselves to the end that their strength and confidence are renewed.

1-88

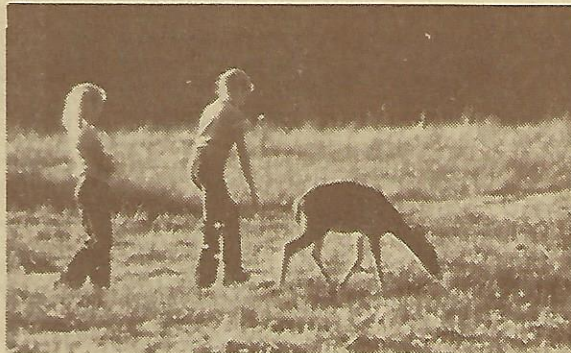
# HARMONIE

## STATE PARK

Route 1, Box 5A  
New Harmony, Indiana 47631  
812-682-4821

## TRAIL MAP

Established in 1966 3,465 Acres  
Off Ind 69 south of New Harmony



Harmonie State Park is located approximately 25 miles northwest of Evansville, and 4 miles south of New Harmony in Posey County, Indiana. The topography varies from flat flood plains along the Wabash River to rolling hills in the camping areas.

Being a relatively new park, the facilities at Harmonie rank among the best in the state. Eight picnic areas, some of which have shelter houses, playground equipment, and running water are located in scenic areas throughout the park. The Wabash River picnic area gives the visitor a chance to view the Wabash at its finest. The camping facilities include a 200 site family campground with electrical hook-ups and modern restrooms, as well as a youth group area and rally campground in a more primitive setting. The olympic size swimming pool is the most popular spot for the young at heart, while nature enthusiasts enjoy the summer Naturalist programs and hiking trails.

The unique efforts of two communal living experiments in the nearby town of New Harmony gives the camper a chance to visit the State Memorial by the same name which retains some of the colorful history for public interest. These utopian experiments originated in New Harmony in the 1800's. (The Harmonists of the Rappite Community 1814-1824 and the Owen Community 1824-1826).

Immigrants from Wurttemberg Germany, led by Father George Rapp, settled here to escape religious oppression. Expecting the second coming of Christ this group lived simply, working the land. In 1824 Father Rapp sold the town to Robert Owen, who was an industrialist and reformer from New Lanark, Scotland.



Owen's dream was to establish a new moral world through education by developing the sense of reason rather than education or factual knowledge. From this community emerged the first free public school, equal education for boys and girls, the first free public library, and the first kindergarten in America.

The combination of a small interesting town, beautiful scenery, friendly atmosphere, and an exciting new recreation area make this an ideal place for a Sunday drive, weekend outing or a long vacation. You are always welcome!

## DESCRIPTION OF TRAILS

1. A relatively short trail leading from the Youth Tent campground into a ravine and gradually ascending into wooded areas and grassy plateaus. This trail returns to the Youth Tent area, past one of the larger pecan trees in the state of Indiana.
2. Leads from the modern campground on grassy slopes between wooded areas, descending through a meadow area to a small stream; meanders on an old country road next to a fast-flowing brook. There are some steep hills in certain places. Returns to the entrance of the modern campground.
3. Begins at the Poplar Grove picnic area and continues past the water tower. The trail overlooks a small stream and eventually crosses it. Returns to the picnic area after ascending a steep hill.
4. A fairly long trail with steep hills, winds through nature forests descending into ravines and across two streams. The trail joins three picnic areas and the Modern Campground any of which may be used as a starting point. It also follows a short section of trail #1.
5. Beginning near the campground gatehouse this trail crosses the dam on a small wildlife pond and returns to the campground. This is a good trail for observing waterfowl and white tail deer.
6. Three-fourths of a mile, easy trail. Begins and ends at Cherry Hill picnic area.

## ACTIVITIES AND FACILITIES

**CAMPING** - Campground equipped with modern facilities. Occupancy limited to two (2) weeks. Most sites will accommodate tents or trailers. Six handicap access sites. No individual water or sewer hook-ups, but electricity available (20 amp service). Dumping station. No reservations. Rally camping and youth tent camping available in designated campgrounds only. Pay phone in modern campground.

**FISHING** - In ponds at the campground and the Wabash River from picnic area. Catfish, crappie, bluegill, etc. State license required.

**HIKING** - Eight miles of easy to moderate hiking trails. No bicycles or vehicles of any kind permitted on hiking trails.

**BIKE TRAILS** - Approximately 3 miles of trail connecting campground and swimming pool. One mile runs through woodland and the remaining two miles run adjacent to roadway. Bikes are available for rent for property use only. Harmonie State Park is part of the Hoosier Bikeway System and is the last leg of the Hoosier Hills Route 4.

**PICNIC AREAS** - Eight picnic areas and 6 shelter houses. Tables, grills, toilet facilities, playground equipment and playfields. Poplar Grove contains paved handicap sites.

**HORSE TRAIL** - 3½ miles of horse trail. Day use ONLY.

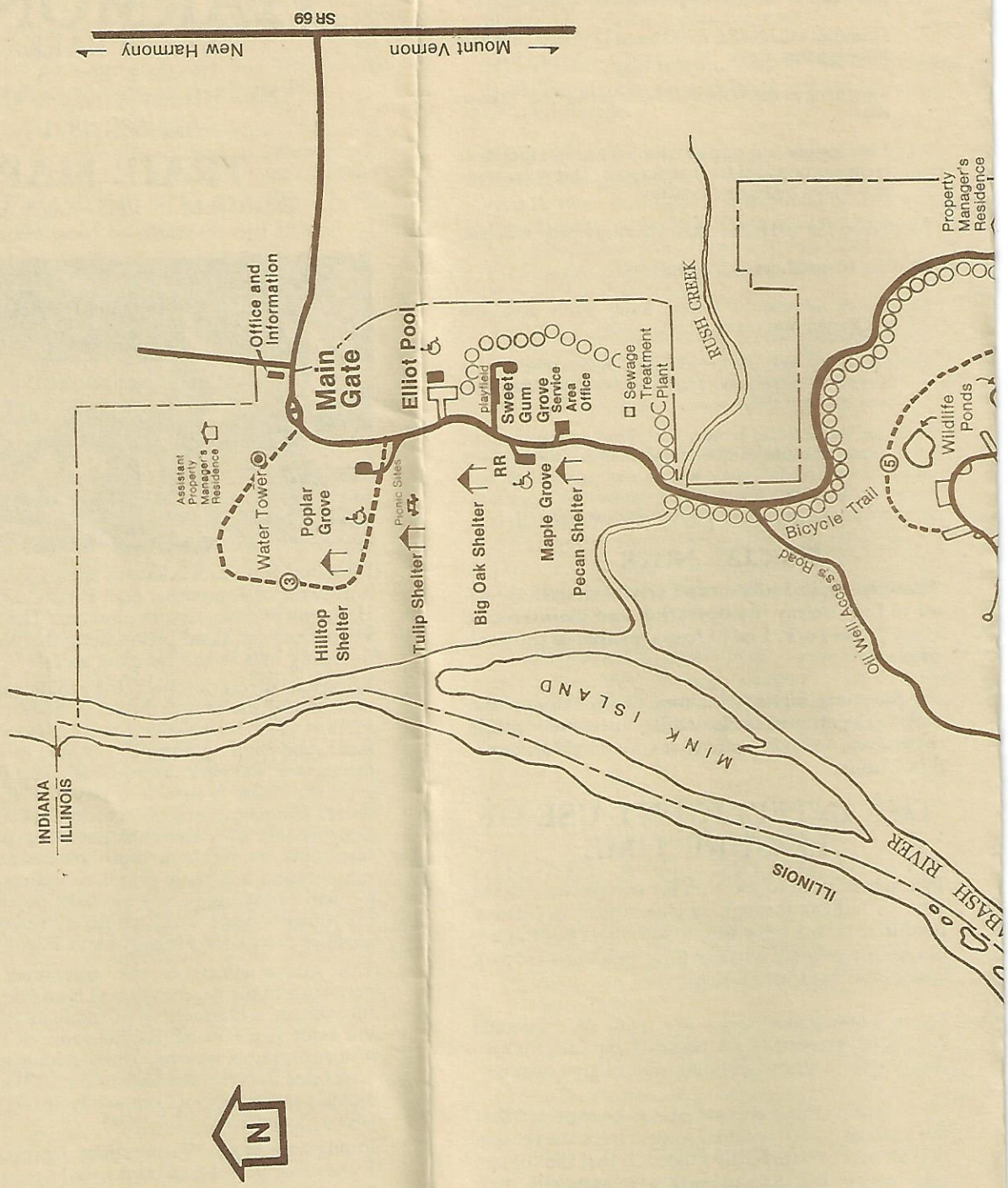
**SWIMMING** - An Olympic-size pool is open from the Saturday before Memorial Day through Labor Day. Moderate fee; coin-operated lockers. Swimming is prohibited in the Wabash River. Bike rental during pool hours and pay phone.

**NATURALIST SERVICE** - Free and available from mid-May through August. Hikes, Junior Naturalist and Hoosier Ecologist programs, plus evening activities. Ask for a schedule at the gatehouse or park office.

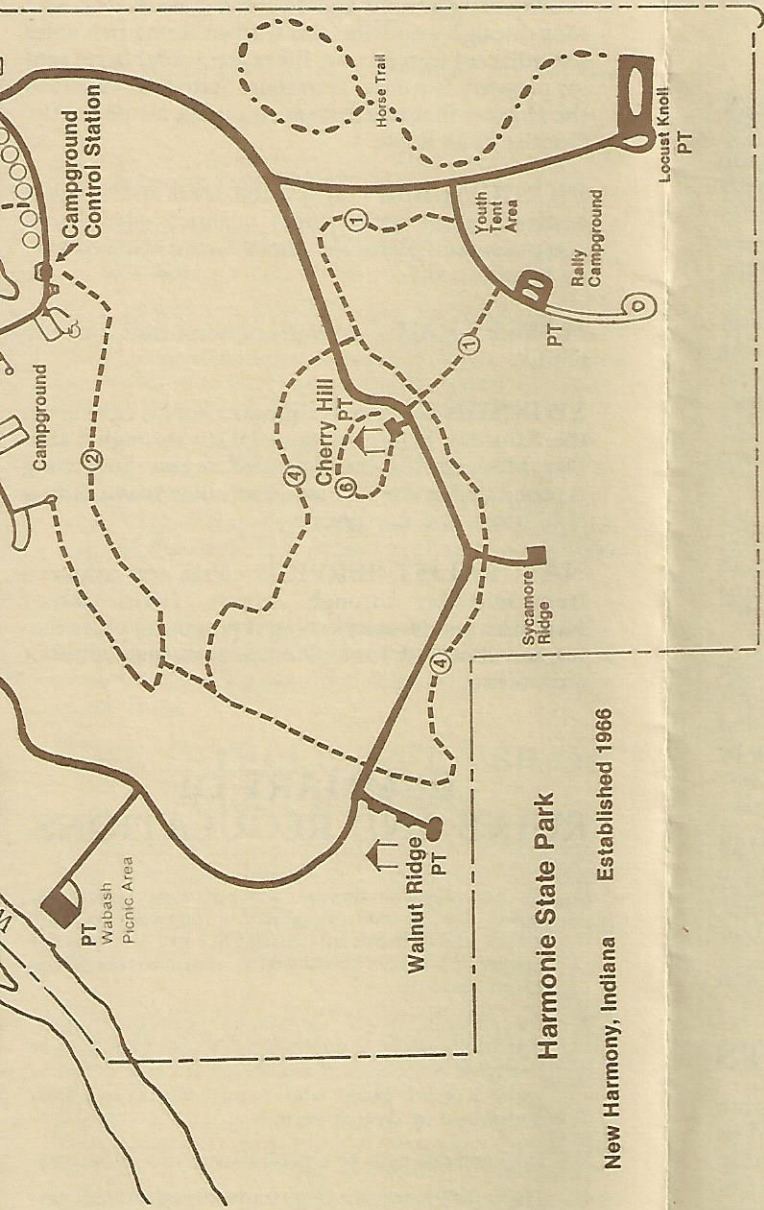
## SUMMARY OF RULES AND REGULATIONS

1. Do not injure or damage any structure, rock, tree, flower, bird or wild animal within the park. Do NOT gather limbs, brush or trees (either live or dead) for firewood! It MUST be allowed to remain to rebuild the natural humus.
2. Any firearm, BB gun, air gun, CO<sub>2</sub> gun, bow and arrow, or spear gun in possession in a state park must be unloaded or un-nocked and stored in a case or locked within a vehicle except when participating in an activity authorized by written permit.
3. Dogs and cats must be kept on a leash while in the park.
4. There shall be no vending or advertising without permission of the department.
5. Camping is permitted only in the campground. Youth groups must be under adult supervision.

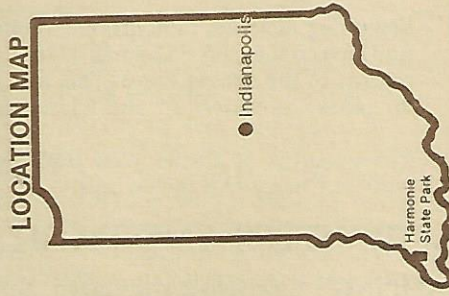








**Harmonie State Park**  
 New Harmony, Indiana      Established 1966



**TRAIL TABLE**

TRAIL	TYPE	MILEAGE
1	Moderate	1
2	Moderate	1.5
3	Easy	1
4	Moderate	2.5
5	Easy	3/4
6	Easy	3/4

**LEGEND**

	Hiking Trail
	Park Boundary
	Pit Toilet
	Rest Room
	Usable by Handicapped
	Horse Trail

