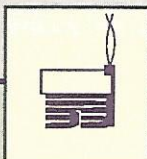


1991



CONNER
PRAIRIE®

Visitors Guide



Welcome

We are delighted you are planning a trip to Conner Prairie, rated America's number one living history museum by one of the nation's leading news magazines. ¶ This visitors guide will help you plan your trip, and we hope you will allow plenty of time to enjoy all that

Conner Prairie, Hamilton County and the surrounding area of Indianapolis have to offer. ¶ Conner Prairie features three historic areas, a modern museum center, a natural amphitheater area, handicapped-accessible nature trail and other special activities. ¶ Begin your visit to Conner Prairie in the museum center. Enjoy an award-winning orientation show, stop by Governor Noble's Eating Place for lunch or the bakery for a snack and visit the Weaver Gallery. When you're ready to leave the 20th century, take the short trip to the museum's three historic areas. ¶ The 1836 Village of Prairietown is a typical community of the early 19th century. Chat with residents as they go about their daily chores and watch woodworkers, potters and blacksmiths as they practice their trades. But remember, it's always 1836 in Prairietown! ¶ The 1823 William Conner home provides a glimpse of one of Indiana's earliest and most influential residents. Adjacent to the home is a Loom House, featuring early textile techniques. The Pioneer Adventure Area gives visitors a chance to try spinning, soap making and other seasonal pioneer activities. ¶ Conner Prairie, owned by Earlham College in Richmond, Indiana, offers entertainment all year long, with changing exhibits and special seasonal programs — everything for your pleasure from an old-fashioned Fourth of July to a look at early Christmas customs in America.

1991 Calendar of Events

The 1991 Conner Prairie season is filled with a variety of unique and special events. The following are activities scheduled for the museum center, amphitheater, William Conner Estate, 1836 Village of Prairietown and the Pioneer Adventure Area. Come experience Where History Comes Alive!™

April

- 3 Historic areas open for regular tours.
- 7 Villagers gather to hear stump speaking for local elections. 27 & 28 Textile experts take wool from Sheep to Blanket at the Conner Estate.

May

- 4 Villagers assume early welfare responsibilities during Contracts for the Poor. Also, the village Justice of the Peace Court meets, trying petty cases.
- 14-19 In honor of International Museum Day, a traveling Cabinet of Curiosities, or early 19th century "museum," comes to the village. 25 Conner Prairie May Balloon Classic (see special events).

June

- 1 & 2 The villagers gather to celebrate a traditional 1836 Wedding. 8 A Time to Keep opens (see exhibits). 9 Learn more about genealogy and history during Family History Day.
- 20 The village Literary Society meets to discuss popular readings of the day. 22 The village Justice of the Peace Court meets. 29 & 30 Music and Merrymaking takes a lighthearted look at music and entertainments of early Indiana.

July

- 3 Symphony on the Prairie begins (see special events). 4 The museum celebrates the Glorious Fourth at Conner Prairie, with political speeches, dancing, a militia muster and contests, all day.
- 13 Residents of the village gather for Internal Improvements. 17 The museum looks at Birthin', early 19th century attitudes towards childbirth, children and family. 27 & 28 Residents concerned about alcohol consumption gather for a Temperance Society meeting.

August

4 Stump speaking for State Elections takes place in the village. 10 & 11 The Methodist Circuit Rider travels through the village for a Camp Meeting, or religious gathering. 15 The village Literary Society meets to discuss popular readings of the day.

17 Author/illustrator Tasha Tudor gives a final public performance. (see exhibits.) 24 & 25 The Colonization Society discusses the efforts to send free slaves to the African colony of Liberia.

September

7 A circuit court judge and the Conner Prairie Volunteer Legal Society come to the village to hold court. 14 & 15 Crafts at Close Range features demonstrations of early 19th century crafts and skills. 21 A death has occurred in the village and a simple 1836 funeral is held in the community cemetery. 28 & 29 Sportsmen's Holiday (see special events).

October

12 & 13 The Pioneer Adventure Area is the site of an Agricultural Fair exhibiting garden products and horticultural techniques common during the first half of the 19th century. 18-31 The Headless Horseman at Conner Prairie (see special events).

November

3 Stump Speaking for National Elections takes place in the village. 7 The village Literary Society meets to discuss favorite readings of the day. 15 & 16 Butcherin', Stuffin' and Smokin' draw visitors to the McClure house in the village where a hog will be preserved for the cold Indiana winter.

December

1 Historic areas close for general tours. Museum winter programs begin. 6-23 Conner Prairie by Candlelight (see special events) and the Festival of Gingerbread (see exhibits).

Exhibits

Conner Prairie's Weaver Gallery

Access to Art opens March 3 and continues daily through May 9. This nationally acclaimed exhibit from the Museum of American Folk Art in New York City comes to Conner Prairie for its only Indiana appearance. The exhibit brings people closer to art by allowing them to touch and closely examine 19th and 20th century forms of folk art. Especially suited for visually and otherwise impaired children and adults.

A Time to Keep opens June 8 and continues daily through November 10. Renowned children's author and illustrator Tasha Tudor shares a lifetime of collecting, including 19th century costumes, a dollhouse and other precious toys. Exhibit will feature a lecture by Mrs. Tudor August 17 in a special farewell appearance. Reservations required for lecture.

Festival of Gingerbread opens December 6 and continues through December 23. Approximately 100 gingerbread houses are displayed as part of this annual competition. Houses are created by children, adults and professional pastry chefs and offer an enchanting display for the holiday season. Admission charged.

Special Events

Conner Prairie May Balloon Classic, May 25 The Saturday of Memorial Day weekend, 33 hot air balloons are filled and turned loose to drift over the prairie and places beyond as visitors watch from the hills, enjoying their picnics. Admission charged.

Symphony on the Prairie, July 3, 4, 6, 10, 13, 17, 20, 24, 27, 31 and August 3, 7, 10 Symphony on the Prairie celebrates its 10th anniversary in 1991 with a new amphitheater shell and stage, and improved viewing areas. The Indianapolis Symphony Orchestra performs as the sun sets on the prairie. Gates open at 5:30 p.m. and concerts begin

at 7:30 p.m. Bring a picnic and visit the historic areas from 5:30-7 p.m. Special Independence Day concerts July 3 and 4 feature patriotic music and fireworks. Admission charged.

Sportsmen's Holiday, September 28 and 29

Champion horse-pulling, sporting demonstrations, retriever trials, outdoor field events, fishing clinics, a fox hunt, food and entertainment are all a part of this exciting two-day event that looks at one of America's favorite past times — historically and today. Admission charged.

Headless Horseman at Conner Prairie, October

18-31 Each evening after the sun sets, the Headless Horseman roams the apple orchard where visitors are taken on a hayride. Ghost stories and local tales are told around bonfires, Washington Irving's "The Legend of Sleepy Hollow" comes to life in a 15-minute play and through a cartoon. There's also music, dancing and pumpkin/face painting for the children. Nightly from 6-9 p.m. Admission charged. A special free members' night is October 19.

Conner Prairie by Candlelight, December 6-23

Feel the warmth and excitement of an 1836 Christmas Eve at Conner Prairie. Stroll down a candlelit path and enjoy the simple holiday traditions of the village of Prairietown. The residents who make this small community their home are eager to share with you the origins of Christmas in the midwest. Nightly from 5:30-8:20 p.m. Reservations required. Call (317) 773-0666 after November 4. Admission charged.

Hearthside Suppers (January, February & March 1992) Served by candlelight, Hearthside Suppers allow guests to cozy up to a fire and join costumed interpreters in preparing a traditional 1836 supper. This three-hour evening includes parlor games and a tour of the home.

Reservations taken beginning November 4, 1991 and are required. Admission charged.

Hours and Admission Rates

(Hours are always eastern standard time.)

The museum's historic areas are open in 1991 from April 3 through December 1. Hours for the historic areas in April and November are Wednesday through Saturday, 10 a.m.-5 p.m. and Sunday, noon-5 p.m. Hours from May through October are Tuesday through Saturday, 10 a.m.-5 p.m. and Sunday, noon-5 p.m. Closed Easter and Thanksgiving. Open Memorial Day, Independence Day and Labor Day.

The museum center is open daily except Christmas and New Year's. Hours are 10 a.m.-5 p.m., Monday through Saturday and noon-5 p.m., Sunday. The Weaver Gallery is open the same hours as the museum center.

Admission to the historic areas is \$8 for adults, \$7.25 for seniors and \$5 for children ages 6-12. Discounts offered to AAA members. A Pioneer Pass offers free admission all year long for \$13, adults and \$7.25, children ages 6-12 (offer differs from membership which enjoys privileges—see membership benefits listed below). Admission to the museum center is free.

Membership

Enjoy a taste of 1836 Indiana all year long with a membership to Conner Prairie. Benefits of membership include free admission to the historic areas, exhibit preview parties, discounts on crafts classes and day camp, a discount at the museum shop, special double discount days at the museum shop and a bi-monthly newsletter. Cost is \$100 for Heritage, \$50 for Family and \$25 for Individual. Memberships may be purchased by mail, telephone or at the admissions desk.

Dining

Governor Noble's Eating Place™, featuring Hoosier cooking and modern offerings, is located in the museum center on the upper level. It is open for lunch Tuesday through Saturday from 11:30 a.m. to 2:30 p.m. and for Sunday brunch from 11 a.m. to 3 p.m. Adjacent to

Governor Noble's is the restaurant's bakery, where visitors can enjoy a piece of pie and cup of coffee.

Sunday Music Series

The restaurant features a special Sunday brunch musical series at no additional charge from 11:30 a.m.-12:15 p.m. and 1:15-2 p.m.: April 14, Classic Chamber Ensemble; May 12, Mother's Day, Harpist; June 9, David Morgan, Blues; July 14, Allegro Duo; August 11, Shady Brave Band; September 8, Mac and Terry Bellrel; October 13, Chanticleer String Quartet; November 10, Normandy String Quartet; December 8, TBA.

Snacks on the Common is open Memorial Day through Labor Day in the Clowes Common adjacent to the historic areas. This outdoor eatery features hamburgers, hot dogs, ice cream and soft drinks.

Shopping

The Museum Shop at Conner Prairie is open daily from 10 a.m. to 5:30 p.m. and Sundays from noon to 5:30 p.m. It also is open many evenings during special events. The shop features handcrafted pottery made by the museum's historic potters, baskets, gift items, books, toys and jewelry.

The Apple Store at Conner Prairie is a special fall produce market which opens in mid-September through early November. It is operated by the Conner Prairie Alliance.

Information

For general information, call the 24-hour information line at (317) 776-6004. For more specific information, call the switchboard at (317) 776-6000 between 8:30 a.m. and 5 p.m. For group tour information, call the group reservation line at (317) 773-0666 between 8:30 a.m. and 5 p.m., Monday through Friday.

Group Tours

Special tours, luncheons and evening programs for groups of 15 to more than 8,000 are available through the marketing department.

Note: All dates and prices are subject to change.

Governor Noble's Eating PlaceTM

Good Day! While you are visiting Conner Prairie, whether for a special event or for touring, plan to stop at Governor Noble's Eating Place. The restaurant was named in honor of Noah Noble, a dashing young statesman who proudly served as Indiana's governor in 1836. Your family or group is always welcome. And remember, there are fresh baked goods to take home from the Governor's private bakery.

Light Side

Featuring a variety of salads such as a chef's salad, chicken salad, taco salad, Cobb salad, fruit plate and spinach salad, ranging from \$4.50 to \$4.95. Includes fresh baked bread and flavored butter.

Governor's Country Store

Enjoy a build-your-own sandwich with soup, a club sandwich or a variety of specialty offerings such as a broiled hamburger, hot brown, grilled cheese with bacon, roast beef with swiss and onions, reuben or grilled chicken breast, ranging from \$4.50 to \$5.25. Served with prairie fries or cole slaw.

Governor Noble's Selections

A delicious grilled and marinated chicken breast roasted with herb butter is served with a house salad, chef's choice of vegetable and fresh baked bread for \$6.50. Or, enjoy the governor's noonday spread, a choice of daily hot entrees served with soup, full salad bar, side dishes, vegetables and potato for \$6.95.

Desserts

Fresh baked village pies, cobbler and bread pudding.

Sunday Brunch

The full buffet, salad bar, dessert and freshly baked omelets are featured on Sundays for \$9.95, adults and \$5.50, children 10 and under.

Call 776-6008 for information and group menus.

Conner Prairie Weekend Packages

Innkeeper Martha Zimmerman in Conner Prairie's 1836 Village of Prairietown would rent you a room at her Golden Eagle Inn, but she has no vacancies!

So, Mrs. Zimmerman highly recommends the Quality Inn/Castleton Suites and the Waterfront Inn/Cicero as two Conner Prairie preferred hotels.

Conner Prairie's 1991 Weekend Packages include overnight accommodations for two adults, admission for two to the museum's historic areas, the noonday spread at Governor Noble's Eating Place and breakfast at the hotel.

Quality Inn/Castleton Suites

Consistently named one of America's top Quality Inns, this family hotel is located in the heart of Castleton, just six miles south of Conner Prairie.

King Prime: This luxurious two-room suite features a living area with table and chairs, cable television, queen-size sleeper sofa and a marble bathtub.



The private bedroom has a king-size bed. Package price is \$93 (\$88.57 plus tax).

Double Queen Suite: This one-room suite accommodates four people and comes with two queen-size beds, a table with chairs and cable television. Package price is \$90 (\$85.71 plus tax).

Each room comes equipped with a wet bar and refrigerator. Full complimentary breakfast is served each morning in the dining room, or you may take it back to your room. Complimentary hors d'oeuvres and non-alcoholic beverages are served from 5-7 p.m. daily.

Cost for additional children staying with their parents is \$13 each. Cost for additional adults (up to two) in same hotel room is \$17 each.

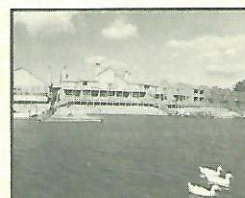
To make reservations call: (317) 841-9700.

Waterfront Inn

The Waterfront Inn, part of a resort property, is located 12 miles north of Conner Prairie in Cicero. The Inn with adjacent Waterfront Restaurant and Lounge, is surrounded by beautiful Morse Lake, and is a favorite vacation spot.

Fireplace Unit: This room features a queen-size bed, sofa bed, dining table and chairs, fully equipped kitchenette, refrigerator, HBO and cable television, sundeck and a fireplace. Package price is \$114. (\$108.57 plus tax)

Fireplace Unit II: This room features two double beds, dining table with four chairs, fully equipped kitchenette, refrigerator, HBO and cable television, swivel rockers, sundeck and a fireplace. Package price is \$114 (\$108.57 plus tax).



Non-fireplace Unit: This comfortable room features two double beds, fully equipped kitchenette, refrigerator, HBO and cable television, swivel rocker, and sundeck. Package price is \$114 (\$108.57 plus tax).

A continental breakfast, including rolls and orange juice, is provided in your room refrigerator. A coffee maker is available in your room, and firewood is supplied.

Cost for additional children staying with their parents is \$13 each. Cost for additional adults (up to two) in same hotel room is \$20 each. To make reservations call: (317) 773-5115.

Weekend Package Extras

Conner Prairie offers weekend package extras. (Packages are for two). **Symphony on the Prairie:** includes above package, plus tickets to Symphony on the Prairie, and boxed picnic dinners. **Headless Horseman:** includes above package, plus spaghetti dinners and tickets to Headless Horseman. **With My Love, Tasha:** Tasha Tudor, artist, author and collector makes her final public appearance August 17. Package includes above, plus tickets to Tasha's lecture and boxed lunches. **Conner Prairie by Candlelight and Hearthside Suppers** will have overnight packages available. Call (317) 776-6000 for more information.

Nearby Shopping, Dining and Entertainment

(All area codes 317)

Antique Shops

Colonial Antiques, 18 miles west of Conner Prairie at 5000 W. 96th Street in Indianapolis near Zionsville.

Specializing in architectural antiques including mantels, lighting, doors, garden items, leaded glass, decorative woodwork, hardware and more. Also carry furniture, advertising, old neon, art deco and mission style items. Open Friday and Saturday noon-5 p.m. or anytime by appointment. 873-2727.

Here to Antiquity, 4 miles north of Conner Prairie at 20 N. 9th Street (on the square) in Noblesville. Located in an award-winning restored 1880s building. Two floors of antiques, including furniture, glassware, toys, books, linens and other collectibles.

Open 10 a.m.-5 p.m. Monday-Friday; 9 a.m.-5 p.m., Saturday; and noon-5 p.m. Sunday. 773-6374.

Jackson Run Antiques, 18 miles west of Conner Prairie in Zionsville. At intersection of 421 and Whitestown Road (S300 or 146th Street), go west to second crossroads. Right to second drive.

Come see an antique shop full of authentic items, including handmade solid cherry, walnut and poplar furniture, quilts, china, lamps, kitchen and fireplace items. Open Monday-Saturday 1-5 p.m. Closed holidays. Other hours by appointment. 769-3377.

The Antique Mall of Carmel, 6 miles west of Conner Prairie at 622-T South Range Line Road in Mohawk Place. Fine antiques, furniture, glassware, jewelry, linens, quilts, silver, lamps and collectibles. 30 dealers featured in the mall. Open Monday-Saturday 10 a.m. to 5 p.m., Sunday noon-5 p.m. 848-1280.

Book Shops

Borders Book Shop, 6 miles south of Conner Prairie at 5612 Castleton Corner Lane, one block east of Allisonville Road on 86th Street.

More than 100,000 titles in stock with room to browse in comfortable surroundings.

Excellent children's and history sections.

Open Monday-Saturday, 9 a.m.-9 p.m. and Sunday 11 a.m.-5 p.m. 849-8660.

Chapman Booksellers, 6 miles west of Conner Prairie at 2160 E. 116th Street in Carmel, in the Keystone Square Mall at 116th and Keystone.

For booklovers, a family bookstore featuring a large children's room, sale room and Christian room. Special orders welcome. Open Monday-Saturday 10 a.m.-9 p.m., Sunday noon-5 p.m. 844-8000.

Church Services

First Christian Church of Noblesville, 3 miles north of Conner Prairie at 16377 Herriman Blvd., at Greenfield Avenue. Sunday worship, 9 a.m. and 10:30 a.m. with interpretation for the hearing impaired at early service. Sunday School is at 9 a.m.

Child care available. 10:30 a.m. worship broadcast on radio station WYIC (1110 AM) and televised on Insight Cable, Channel 19 (HCTV).

Information line 773-0126.

Family Needs

Kenley's Supermarkets, 4 miles north of Conner Prairie in Noblesville at 1107 South Tenth Street and 1930 E. Conner Street. Serving Hamilton County since 1940, this family-owned supermarket has a deli section for take-out sandwiches and a wide variety of groceries and family needs. Open daily 773-2980.

Fast Food and Pizza

Pizza Hut, 1 mile south of Conner Prairie at 11722 Allisonville Road in Fishers. Large, 205-seat restaurant can serve parties from 1 to 90 in a private garden room. Menu features pizza, pastas and salad bar.

Pizza buffet available with advance notice. Open 11 a.m. Monday-Saturday, and noon Sundays. 578-8000 to book groups or parties.

Subway, 1 mile south of Conner Prairie at 11801 Allisonville Road in Fishers. Offers a fresh alternative for lunch and dinner. Bread is baked fresh daily and all ingredients are fresh, from cold cuts to free sandwich fixings. Free refills on drinks. Open Monday-Saturday, 10 a.m.-midnight and Sunday, 11 a.m.-midnight. 577-4440.

Restaurants

Bovie Dessert Cafe, 10 miles south of Conner Prairie at 6255 N. College Avenue in Broad Ripple. Indianapolis' finest dessert and coffee shop, featuring vividly flavored gelato (Italian ice cream),

fresh pastries and a wide variety of gourmet coffees, including cappuccino and espresso. Open Monday through Thursday 7 a.m.-11 p.m., Friday and Saturday 7 a.m.-2 a.m. and Sunday 9 a.m.-11 p.m. Hours vary seasonally. 255-5066.

Shopping Areas

The Fashion Mall/Keystone at the Crossing, 6 miles south of Conner Prairie at 8701 Keystone Crossing, or just off the I-465 beltway in Indianapolis at Keystone.

Featuring more than 95 specialty stores such as Jacobson's, Laura Ashley, Williams Sonoma, N. Theobald's, Eddie Bauer, Ann Taylor, Banana Republic and more. Open 10 a.m.-8:30 p.m. Monday through Friday; 10 a.m. to 6 p.m. Saturday; and noon-5 p.m. Sunday. 574-4000.

Keystone Square Mall of Carmel, 6 miles west of Conner Prairie at 116th Street and Keystone. Keystone Square offers more than 60 different specialty retailers conveniently situated in the heart of Carmel with family shopping away from the congestion of other centers. Besides the variety, convenience and value, customer service is waiting to be bestowed upon you and your family. Open 9:30a.m.-9:30 p.m. weekdays and Saturdays, and 11 a.m.-5 p.m. Sundays.

Union Station, 20 miles south of Conner Prairie in the heart of downtown Indianapolis at 39 West Jackson Place. Depart from the ordinary for shopping, dining and fun. Historic train station is restored and now home to specialty shops, nightclubs, fine eating and express eateries. Groups welcome. Open daily and evenings. 267-0700.

Zionsville, 18 miles west of Conner Prairie on 116th Street (State Road 334). Quaint Victorian village with bricked Main Street and a collection of shops, antiques, restaurants, museums, bed and breakfasts, craft and antique mall, parks, carriage rides and annual special events. For more information, contact the Zionsville Chamber of Commerce at 135 S. Elm, P.O. Box 148, Zionsville, IN 46077.

Specialty Shops

Earthly Designs, 6 miles south of Conner Prairie in the Fashion Mall, 8701 Keystone at the Crossing. Gifts Inspired By Nature. Come experience the cool forest and flowing waterfall as you discover nature-related gifts, educational toys, wildlife

decoys, audio and video tapes, artwork and more for the entire family. Open Monday through Friday 10 a.m.-8:30 p.m., Saturday 10 a.m.-6 p.m. and Sunday noon-5 p.m. 580-1861.

Indiana Folkart and Antiques, 18 miles west of Conner Prairie at 120 South Main Street in Zionsville. Zionsville's country store, with a complete line of accessories for your country home. Clothing, jumpers, sweats and jewelry. Children's pop-up books, cast iron banks, tin toys, country antiques and primitives. Open Monday through Saturday 11 a.m.-5 p.m. Closed Sundays. 873-4424.

Kits & Kaboodle, Inc., 6 miles south of Conner Prairie in the Fashion Mall, 8701 Keystone at the Crossing. The world's most beautiful toys, dolls and teddy bears. Steiff, Brio, Corolle, Madame Alexander, books, puzzles, games, educational toys and most everything else. Open Monday through Friday 10 a.m.-8:30 p.m., Saturday 10 a.m.-6 p.m. and Sunday noon-5 p.m. 574-3333.

Reed & Vine Basketry, 6 miles west of Conner Prairie at 210 Rangeline Road in Carmel. Specializing in basketweaving supplies, handwoven baskets and other handcrafted items and giftware. Open Monday through Saturday 10 a.m.-4:30 p.m.. Closed Sundays and holidays. 844-4300.

Something Else, 18 miles west of Conner Prairie at 295 South Main Street in Zionsville. This specialty store offers an abundance of unique gifts. An exquisite selection of chocolate truffles, gourmet coffee, jewelry and largest collection of gifts and accessories in Indiana by Laurel Burch. Open Monday through Saturday, 10 a.m.-6 p.m. 873-2872.

Wells Flower and Gift House, 10 miles southwest of Conner Prairie at 2160 West 86th Street. Offering distinctive gifts from the finest collections: exquisite chocolates, dazzling crystal, china, designer watches and jewelry, accessories for the home and bath, children's designer clothing, plants from our greenhouse and, of course, the finest floral arrangements in Indiana. Open 7 days a week. 872-4267.

Enjoy A Weekend Getaway

While visiting Conner Prairie,
experience all of the other exciting
things Hamilton County has to offer.
Magical nightlife...music...historic
landmarks and tours...antiques...great
shopping and restaurants...even
an amusement park!

Let us help you plan a weekend getaway.

Hamilton County Convention
& Visitors Bureau
136 South 9th, Suite 322
Noblesville, Indiana 46060
(317) 776-1234

Getting to Conner Prairie

