

SPECIAL NOTE

Receipts from admission and service charges are used to help defray the operation and maintenance costs of the park. List of fees available in the park office.

SUMMARY OF RULES AND REGULATIONS

1. Do not injure or damage any structure, rock, tree, flower, bird or wild animal within the Park (See No. 2). Do NOT gather limbs, brush or trees, (either live or dead) for firewood! It MUST be allowed to remain to rebuild the natural humus.
2. Any firearm, BB gun, air gun, CO₂ gun, bow and arrow, or spear gun in possession in a state park must be unloaded or un-nocked and stored in a case or locked within a vehicle except when participating in an activity authorized by written permit.
3. Dogs and cats must be kept on leash while in the park. Pets not permitted in inn rooms.
4. There shall be no vending or advertising without permission of the department.
5. Camping is permitted only in the campground. Youth groups must be under adult supervision.
6. Fires shall be built only in places provided. Visitors must put waste in receptacles provided for that purpose.
7. Motorists will observe speed limits as posted, and park in designated areas.
8. Swimming or bathing in streams, creeks and under waterfalls is prohibited.
9. Drinking water should be taken only from pumps, hydrants, or fountains provided for that purpose. This water supply is tested regularly for purity.
10. Report lost or found articles to the property manager.

The programs, services, facilities and activities of the Indiana Department of Natural Resources are available to everyone without regard to sex, handicap, creed, color or national origin.

THE INTELLIGENT USE OF LEISURE TIME

This trail map is given to you with the compliments of the State of Indiana through its Department of Natural Resources in the hope that it will direct your attention to the primary purpose for which the state park system has been established.

These recreational areas are parts of 'original America,' preserving for posterity typical primitive landscapes of scenic grandeur and rugged beauty.

Along the quiet trails through these reservations, it is to be expected that the average citizen will find release from the tension of their overcrowded daily existence; that the contact with nature will refocus with a clearer lens their perspective on life's values and that they may here take counsel with themselves to the end that their strength and confidence are renewed.

1-88

CLIFTY FALLS

STATE PARK

1501 Green Road

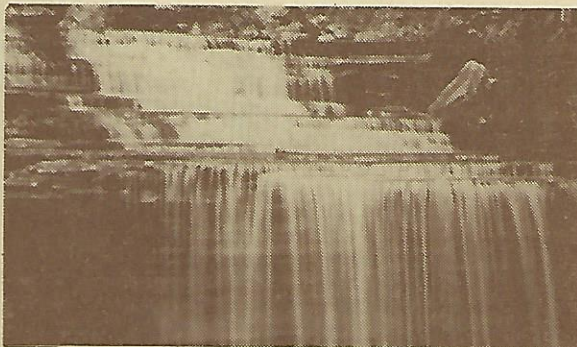
Madison, Indiana 47250

(812) ~~273-5495~~ 265-1331

TRAIL MAP

Established 1920 1,360 Acres

On Indiana 56 and 62, Near Madison



People have always been fascinated by scenes of rugged geologic splendor, places which give witness to the awesome powers at work in nature. Clifty Falls State Park, with its deeply cut gorges, sheer rock walls, and plunging waterfalls, is such a place. Like the proverbial cowboy who first viewed the Grand Canyon one cannot help thinking, "Something has happened here!"

Many have compared its scenery to that of the Swiss Alps. The mountains there and the bedrock exposures here have been sculptured by the Ice Age of the past million years. In fact, Clifty Falls and the nearby Ohio River are products of the Ice Age. The Ohio River is a trench cut by sand and gravel laden melt waters of the glacial ice mass and basically marks the southern most advance of the glaciers which came from the north. Clifty Falls and its canyon are a subsequent erosion feature. From the lip of Clifty Falls, at an elevation near the general level of the county, Clifty Creek plunges down more than seventy feet. In nearly three miles of canyon the creek descends another two-hundred and fifty feet to the Ohio River below. There are four major waterfalls and numerous minor ones in the park.

The four-hundred and twenty-five million year old shales and limestones of the park are among the oldest bedrock exposures in Indiana. They are some one-hundred million years older than the sandstones and shales of the south central 'Knobs' region and nearly one-hundred and fifty million years older than the coal-bearing deposits of southwestern Indiana. The disintegrating cliffs are widely known for the abundant fossil remains of ancient marine life which was interred in the formation of the rock. Many famous paleontologists have studied fossils here.

In 1853 the Madison and Indianapolis Railroad Company began work on a railway which was to have run west from Madison then up Clifty Creek Canyon and Dean's Branch to connect with the main line about one mile north of Madison. Two tunnels were planned for the four and three-quarter mile line. The lower tunnel was barely started and excavation of the upper tunnel, which traverses the cliff just

south of Tunnel Falls, was in progress when financial problems made it necessary to suspend operations. For many years the project was known as Brough's Folly, after John Brough, developer and president of the railroad company. Today the project would be considered entirely feasible. Portions of the park's hiking trails follow the original grade and several piers and trestle abutments may still be seen.


In June, 1916 members of the State Park Commission, chaired by Colonel Richard Lieber, met with civic leaders from Madison to discuss the matter of establishing a state park. The following October, Clifty Falls and a nearby area known as Cedar Cliffs were reviewed as potential state park sites. Not until spring of 1919, after the intervention of World War I, was any further progress made. The creation of a state park became a spirited, local issue supported by the residents of Madison and the surrounding area. Many wanted the park to be a memorial to Jefferson County soldiers. Led by State Senator W.A. Guthrie, money was raised locally to purchase options on the land embracing Clifty Falls and the canyon. A plan was worked out in which the state would match the funds raised locally. In October of 1920, Clifty Falls State Park was established, a gift from the citizens of Jefferson County to the State of Indiana. For many years the park consisted of a tract of land six-hundred and seventeen acres in extent, including the falls, the canyon, and the immediate upland rim. In 1965 the park was more than doubled in size by the acquisition of adjoining upland fields from the Madison State Hospital. This 'old field' areas has provided the space needed for modern recreational demands. Located here are the olympic size swimming pool, the new campground facility, the Cragmont picnic area, and the exercise trail.

From the bluffs overlooking the Ohio River to the misty plunge basin of Clifty Falls, the park offers the nature enthusiast a genuine thrill. In sharp contrast to the scenes of long ago where huge boulders tumbled from the rim to the canyon floor below, wildflowers, ferns and mosses flourish in a peaceful quiet. On the upland fields are white-tail deer, red and gray fox and bob-white quail. Songbirds abound throughout the park and vultures, which nest along the cliff, soar and glide overhead on six-foot wings. The town of Madison and the Ohio River Valley make up the panorama seen from the lookout tower. Nestled in next to Clifty Inn is the nature center, formerly the saddle barn. In April of 1974 tornadoes devastated the south end of the park, forcing a halt to the saddle barn rides. The subsequent establishment of a nature center in the old barn has brought new emphasis to natural history, outdoor education, and recreation in Clifty Falls. In summer the naturalist staff conducts daily activities, including hikes, nature talks, slide shows and campfires. We sincerely hope that you enjoy your visit to Clifty Falls State Park.

DESCRIPTION OF TRAILS

1. MODERATE. Starts from parking area behind nature center, winds along rim of canyon and returns to the park road via a connecting trail. (Includes the observation tower overlooking the Ohio River.)
2. RUGGED. Starts from a connecting trail (See Trail No. 1); winds down to the creek bed at the mouth of the canyon; follows the creek bed to the foot of Clifty Falls.
3. RUGGED. Starts from a connecting trail (See Trail No. 1); follows the canyon wall between the rim and creek to the west edge of Poplar Grove picnic area.
4. MODERATE. Starts from Hoffman Falls; overlooks canyon and follows the rim to the Lilly Memorial.

5. RUGGED. Starts from the Lilly Memorial, follows the canyon wall past both ends of the railroad tunnel and ends at Tunnel Falls.
6. RUGGED. Starts from Hickory Grove and follows canyon wall near the rim to Lookout Point. This trail offers several scenic views of the canyon.
7. MODERATE. Starts at Lookout Point and follows canyon rim to a fork at which point one may travel the rugged rim route to Little and Big Clifty Falls. The moderate alternate route to the right continues north paralleling Little Clifty Creek, crossing and returning south to north shelter.
8. RUGGED. Starts west of the gatehouse, travels west side of Clifty gorge overlooking Big Clifty Falls and canyon. Exits canyon by making left turn-up-stream and intersects with trail 2. (See map)
9. MODERATE. Starts at the east side of the family campground (see map) winds through original woodlands. This trail passes through abandoned farmland and across small streams to the swimming pool complex.
10. FITNESS TRAIL. Start and finish at north west corner of swimming pool parking lot. 20 stations, one mile in length.




CLIFTY INN

Write to Reservation Clerk
Clifty Inn - P. O. Box 387
Madison, Indiana 47250

OPEN ALL YEAR

Rooms and Motel Units Available
Dining Room Open to the Public

812-265-4135



ACTIVITIES AND FACILITIES

CAMPING — Campground equipped with modern facilities. Occupancy limited to two (2) weeks. Some sites will accommodate trailers. No modern hookups, but electricity available. Some campsites available for reservation.

HIKING — More than 12 miles of moderate to rugged trails.

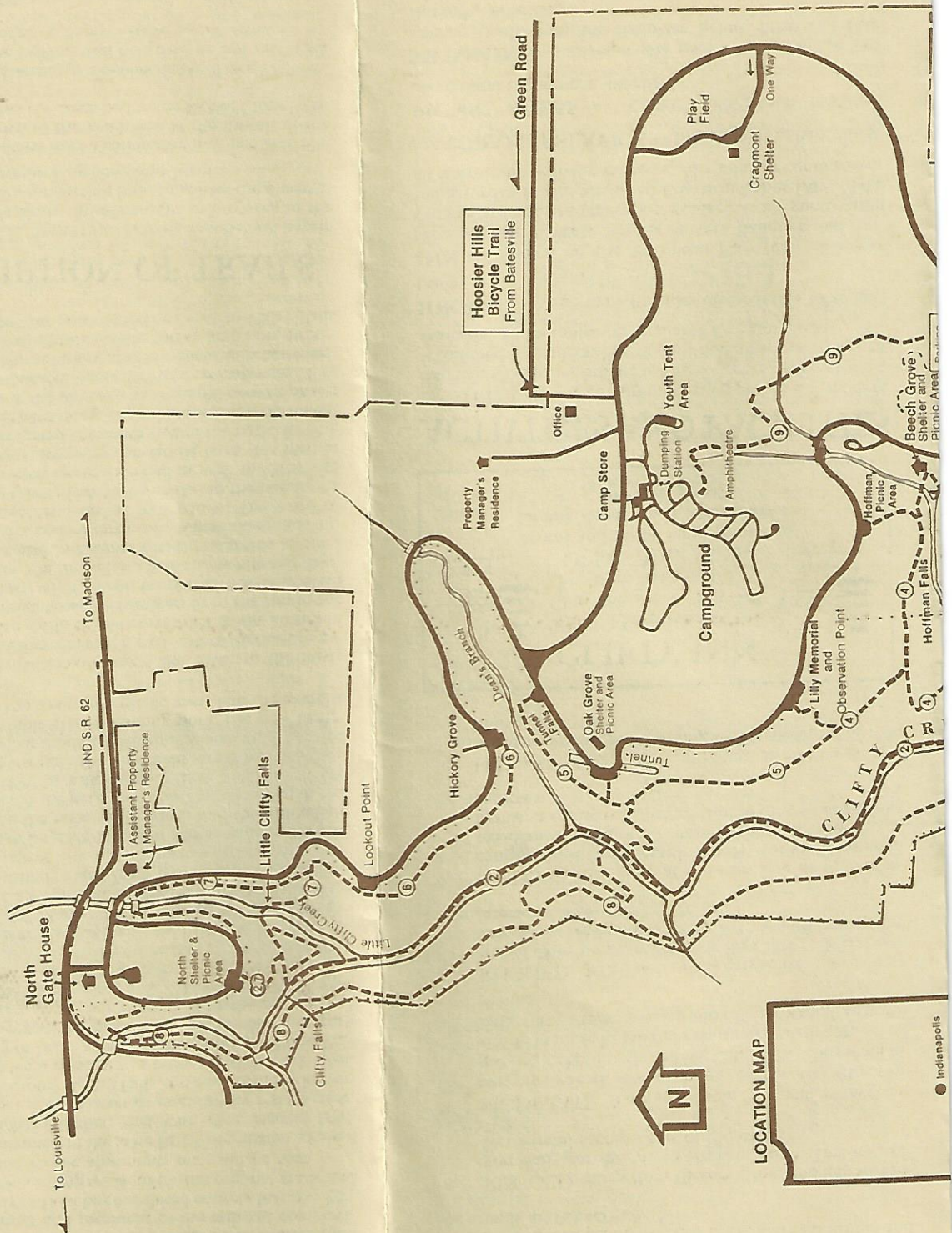
INN — Rooms on the European Plan (cost of meals separate), single meals, Sunday dinners, banquets and convention facilities. Swimming pool available to inn guests; from the Saturday before Memorial Day thru Labor Day. Make all reservations with inn manager. All rooms air-conditioned.

NATURALIST SERVICE — Free. Inquire at park office.

PICNIC AREAS — Tables, grills, toilet facilities, playground equipment, playfields.

SWIMMING — Olympic-size pool with bathhouse and wading pool, open the Saturday before Memorial Day thru Labor Day.

TENNIS COURTS — Located across from Clifty Inn swimming pool.



Hoosier Hills
Bicycle Trail
From Batesville

LOCATION MAP

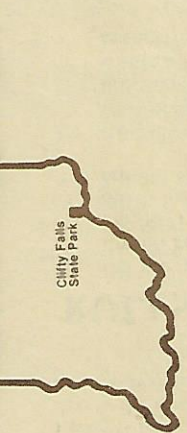


● Indianapolis

To Louisville ← IND.S.R. 62 → To Madison

Green Road

CLIFTY CR



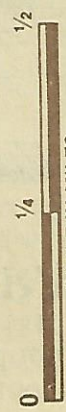
Clifty Falls State Park

Established in 1920 1,360 Acres
Madison, Indiana

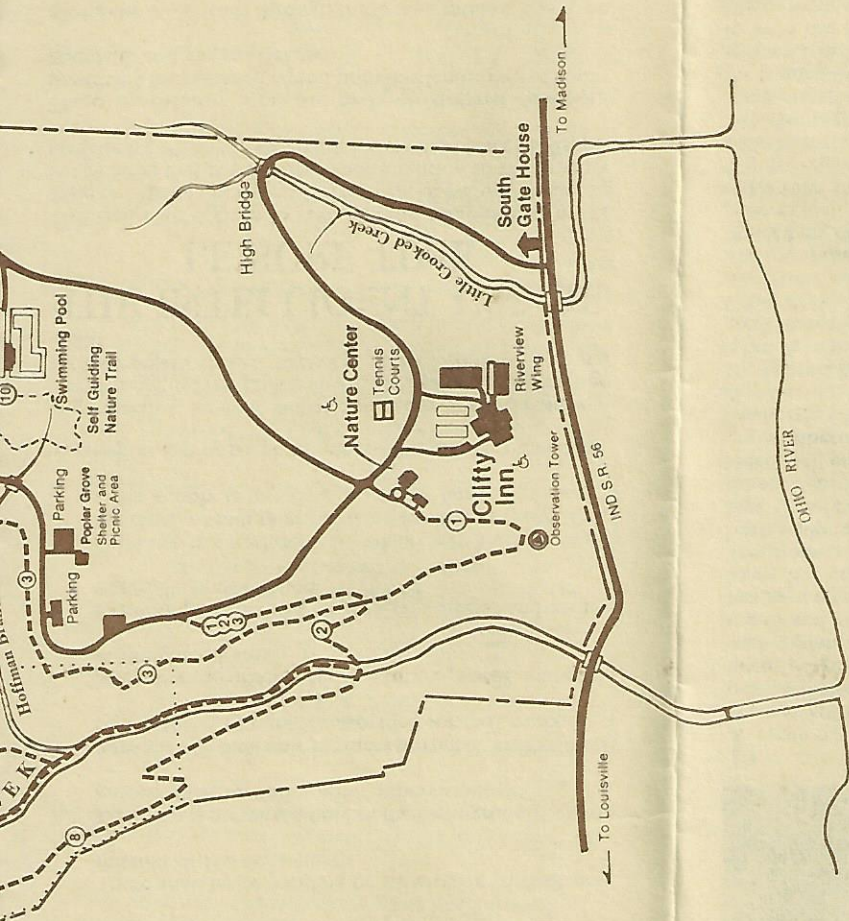
TRAIL TABLE

TRAIL	MILEAGE	TRAIL TYPE
1	5/8	Moderate
2	3	Rugged
3	1	Rugged
4	3/4	Moderate
5	1	Rugged
6	1/2	Rugged
7	1 1/4	Moderate
8	4 1/2	Rugged
9	6/10	Moderate
10	3/4 mile	Self Guiding Nature Trail

Height of Falls
Big Clifty Falls 60'6"
Little Clifty Falls 60'
Hoffman Falls 77'9"
Tunnel Falls 82'7"



Clifty Creek's stone bed serves as Trail #2 and is sometimes impassible due to high water.



This dot pattern represents the boundary for the Clifty Canyon Nature Preserve.

It should be noted that the Clifty Canyon Nature Preserve lies within the boundaries of the Park. This 778 acre Nature Preserve is located in the north west section of the park. Please be aware that this Nature Preserve should be left undisturbed and that only hiking is allowed inside the boundaries.

LEGEND

	Property Boundary
	Hiking Trails
	Roads