

## SUMMARY OF RULES AND REGULATIONS

1. Do not injure or damage any structure, rock, tree, flower, bird or wild animal within the park. Do NOT gather limbs, brush or tress (either alive or dead) for firewood! It MUST be allowed to remain to rebuild the natural humus.
2. Any firearm, BB gun, air gun, CO<sub>2</sub> gun, bow and arrow, or spear gun in possession in a state park must be unloaded or un-nocked and stored in a case or locked within a vehicle except when participating in an activity authorized by written permit.
3. Dogs and cats must be kept on leash while in the park.
4. There shall be no vending or advertising without permission of the department.
5. Camping is permitted only in the campground. Youth groups must be under adult supervision.
6. Fires shall be built only in places provided. Visitors must put waste in receptacles provided for that purpose.
7. Motorists will observe speed limits as posted and park in designated areas. 25 m.p.h. maximum.
8. Swimming is limited to the pool only.
9. Drinking water should be taken only from pumps, hydrants or fountains provided for that purpose. This water supply is tested regularly for purity.
10. Report lost or found articles to the park office.

## HELP PREVENT FOREST FIRES

### PLEASE DO NOT FEED WILDLIFE

The programs, services, facilities and activities of the Indiana Department of Natural Resources are available to everyone without regard to sex, creed, color or national origin.

## THE INTELLIGENT USE OF LEISURE TIME

This trail map is given to you with the compliments of the State of Indiana through its Department of Natural Resources in the hope that it will direct your attention to the primary purpose for which the state park system has been established.

These recreational areas are parts of 'original America' preserving for posterity typical primitive landscapes of scenic grandeur and rugged beauty.

Along the quiet trails through these reservations, it is to be expected that the average citizen will find release from tension of their overcrowded daily existence; that the contact with nature will refocus with a clearer lens their perspective on life's values and that they may here take counsel with themselves to the end that their strengths and confidence are renewed.

# BROWN COUNTY

## STATE PARK<sup>47</sup>

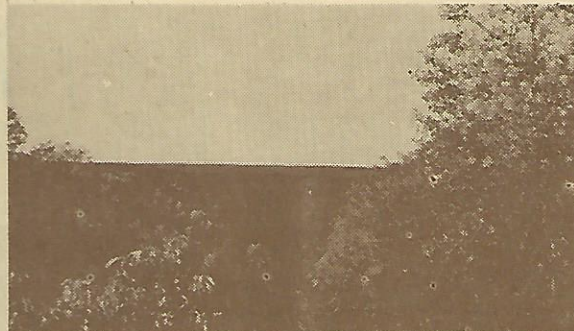
Box 608, Nashville, IN ~~46~~448

## TRAIL MAP

Established 1929 15,679 Acres

On Ind. 46 & 135 near Nashville

(812) 988-6406



**B**rown County State Park is the largest Indiana State Park. This nationally known 15,679 acre facility first opened to the public in 1929.

In the first few years as the park grew in popularity, several facilities were developed. Abe Martin Lodge, several cabins and a saddle barn were built, as was a swimming pool which has recently been replaced with an olympic-size pool. The roads, entrances, and many trails were added and improved during this time.

On June 1, 1934 the Veteran's Civilian Conservation Corps Company 1557 began its work. The planting of black locust, black walnut, various pines and spruces gave nature a helping hand in healing extreme erosion. The C.C.C. workers also built most of the existing buildings, shelters, picnic tables, ovens, roads, trails, and the two log lookout towers. They cleared most of the vistas along the park's roadway and built Ogle Lake in 1934-35. Strahl Lake was built earlier, around 1929.

For those who would rather see the park on foot or horseback, many miles of well-marked trails are available. About 49 miles of bridle trails and over 12 miles of hiking trails lead through the steep, forested hills. The roadless southwestern and eastern parts of the park can be visited only by foot or horseback. The Ogle Hollow Nature Preserve, within the park, contains an attractive self-guiding nature trail, which describes natural aspects of the park.

Picnickers have their choice of several picnic areas — some of which have shelters equipped with fireplaces. Comfort stations are located nearby.

The park has a nature center in which a snake exhibit, bird-watching room and other displays are housed. Naturalist services are available year-round and are headquartered in the nature center.

The wildlife that inhabits Brown County State Park includes a variety of species adapted to life in the forest and forest edges. Some mammals such as the white-tailed deer, raccoon, gray squirrel, and various birds including robin, white-



breasted nuthatch, bluejay, cardinal, junco and crow are seen by visitors. Wild turkey has also been sighted. An early history of Brown County (Goodspeed, 1884) records that deer, bear, wolves and cougar (or panthers, as they were called then) were numerous, even in the mid-1800s. The bears that once lived here left evidence of their presence in the several bear wallows which remain such as Bear Wallow Hill located north of Nashville. Local people say that at least two bear wallows once existed on Weed Patch Hill. Bears came from the surrounding hills to roll in the mud, probably for relief from heat, flies and external parasites.

Camping sites are available year-round. The campgrounds have electrical hook-ups and modern comfort stations and showers. Brown County also has a horsemen's campground located in the extreme southern part of the park. For those visitors who prefer all of the comforts of home, Abe Martin Lodge contains 84 bedrooms (each with two beds and bathroom), as well as two large meeting rooms, a dining room and a snack bar. There are also 24 cabins for rent with a total of 56 bedrooms. Twenty family housekeeping cabins, completely furnished, are available year-round.

The park offers a swimming pool, shelterhouses, playground equipment, fishing on two lakes and a country store for picnic supplies and souvenirs. In addition, a firetower is open, which provides an outstanding view of the countryside.

The varied facilities of Brown County State park make possible enjoyable outdoor experiences for people with a wide range of tastes and preferences. Brown County State Park has not only attracted millions of individual tourists and families over the years, but has hosted many special events as well. Camping groups, horsemen's organizations and archery tournaments are some of the past attractions. In 1987, Brown County served as the location of the Cycling Road Race for the 10th Pan American Games.

### ABE MARTIN LODGE

Write to Reservation Clerk, Box 25  
Abe Martin Lodge, Nashville, IN 47448  
for Reservations and Further Information

Lodge rooms and Cabins Available  
Dining room open to the Public  
Open Year-Round  
(812) 988-4418

## DESCRIPTION OF TRAILS

- 1) Joins with Trail 2 for a short distance to return to near Lodge. Leads through wooded land where oak, hickory, sassafras, beech, and maple may be observed. Wildflowers and birds abound in this area.
- 2) Leads past North Overlook and passes several large trees in the park. Circles to join with Trails 1 and 3 to return to Lodge. The native white-tailed deer can occasionally be seen on this trail.
- 3) An interesting trail to observe a variety of topography. Passes saddle barn and amphitheatre to return to the lodge. Varieties of ferns can be seen in the ravines and on the slopes.
- 4) Starts near the end of Ogle Ridge campground and leads through upland terrain to a deep ravine at the headquarters of Ogle Lake. Connects 5 and 7.

- 5) A self-guiding nature trail thru Ogle Hollow Nature Preserve. This trail starts near paved park road north of rally campground and continues down a wooded slope, where yellowwood trees abound. Returns near the rally campground. Connects with Trail 7. The pileated woodpecker has been observed in the area through which this trail passes.
- 6) Encircles Jimmie Strahl Lake where the hiker may enjoy an easy walk around the lake and return to the point of origin near the dam.
- 7) This trail enables the hiker to explore the shores of Ogle Lake while in a hilly, wooded habitat. Here also, the pileated woodpeckers have been known to nest.
- 8) Extends from west gate house eastward to west overlook continues to near Hesitation Point, and then southeast to parking area at Ogle Lake and Trail 7.



## ACTIVITIES AND FACILITIES

**CAMPING** - Campground equipped with modern facilities. Occupancy limited to two (2) weeks. Some sites will accommodate trailer (no modern hook-ups) and electricity available. A separate horsemen's campground is available. Rally campground available. Campsites available for reservation.

**FISHING** - Bass, bluegill, etc. State license required. Can be obtained at park office. Rowboats permitted on Ogle Lake only.

**HIKING** - More than 10 miles of easy-to-rugged trails.

**INN ACCOMMODATIONS** - Lodge and cabin guest rooms. Single meals, Sunday dinners, banquets. All on the European Plan. Make all reservations with the inn manager. Lodge rooms and dining room open year-round. Make all reservations with the Lodge.

**NATURALIST SERVICE** - Free; inquire at park office, nature center, or lodge.

**SELF-GUIDING AUTO TOUR** - With cassette tape — inquire at Nature Center, summer months.

**PICNIC AREAS** - Tables, grills, toilet facilities; playground equipment and playfields. Wood available from concessionaire during summer months.

**RECREATION BUILDING** - Nominal charge. Inquire at park office.

**SHELTERS** - Reservations for shelters; inquire at park office.

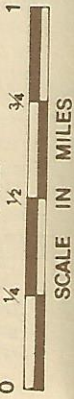
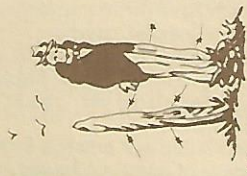
**SADDLE HORSES** - Bridle trails, pony rides, hayrides. Inquire at saddle barn.

**SWIMMING** - Excellent pool, open Saturday before Memorial Day through Labor Day. Swimming prohibited in Ogle Lake and Strahl Lake.

**TRAIL RIDES** - Facilities for those who wish to bring their own horses. Inquire at park office.

**FAMILY HOUSEKEEPING CABINS** - Two bedrooms, living rooms; complete kitchen; bathroom; will sleep eight; linens; dishware and cooking utensils provided; easy walking distance to the Lodge; open the year-round. Make all reservations with the Lodge.





SCALE IN MILES

To Indianapolis

Nashville

IND. 135 & 46

SALT CREEK

To Columbus

IND. 46

To Bloomington

3 ton limit  
9 ft. clearance  
Covered Bridge

NORTH  
GATE HOUSE

Tennis Courts

Swimming pool

Upper  
Shelter  
House

Lower Shelter House

Saddle Barn

Amphitheater

ABE  
MARTIN  
LODGE AND  
CABINS

North  
Lookout  
Tower

Family  
Cabins

Vistas

Park  
Office

Fire Tower

Hoosier's  
Nest

Walnut

Vista  
(Hestation Point)

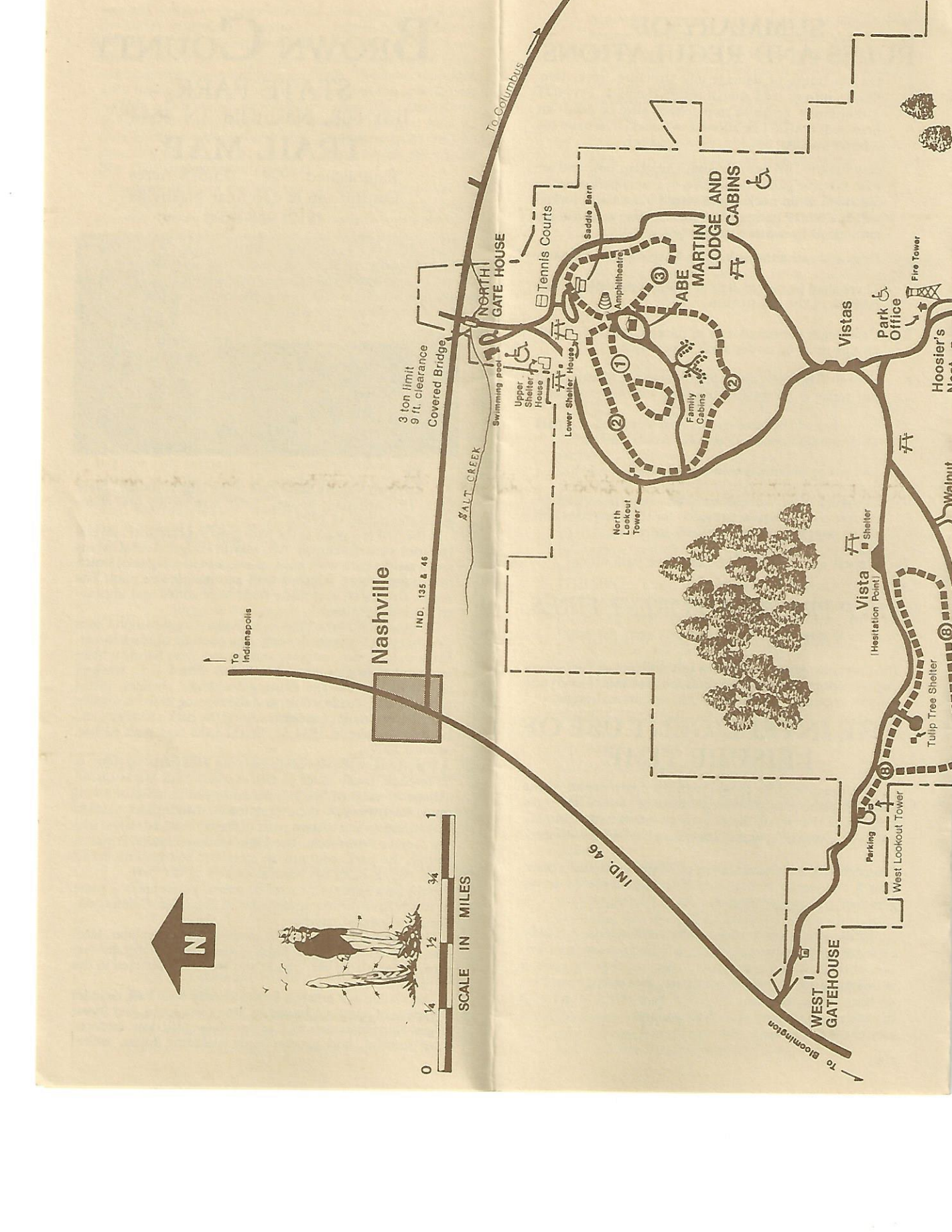
Shelter

Tulp Tree Shelter

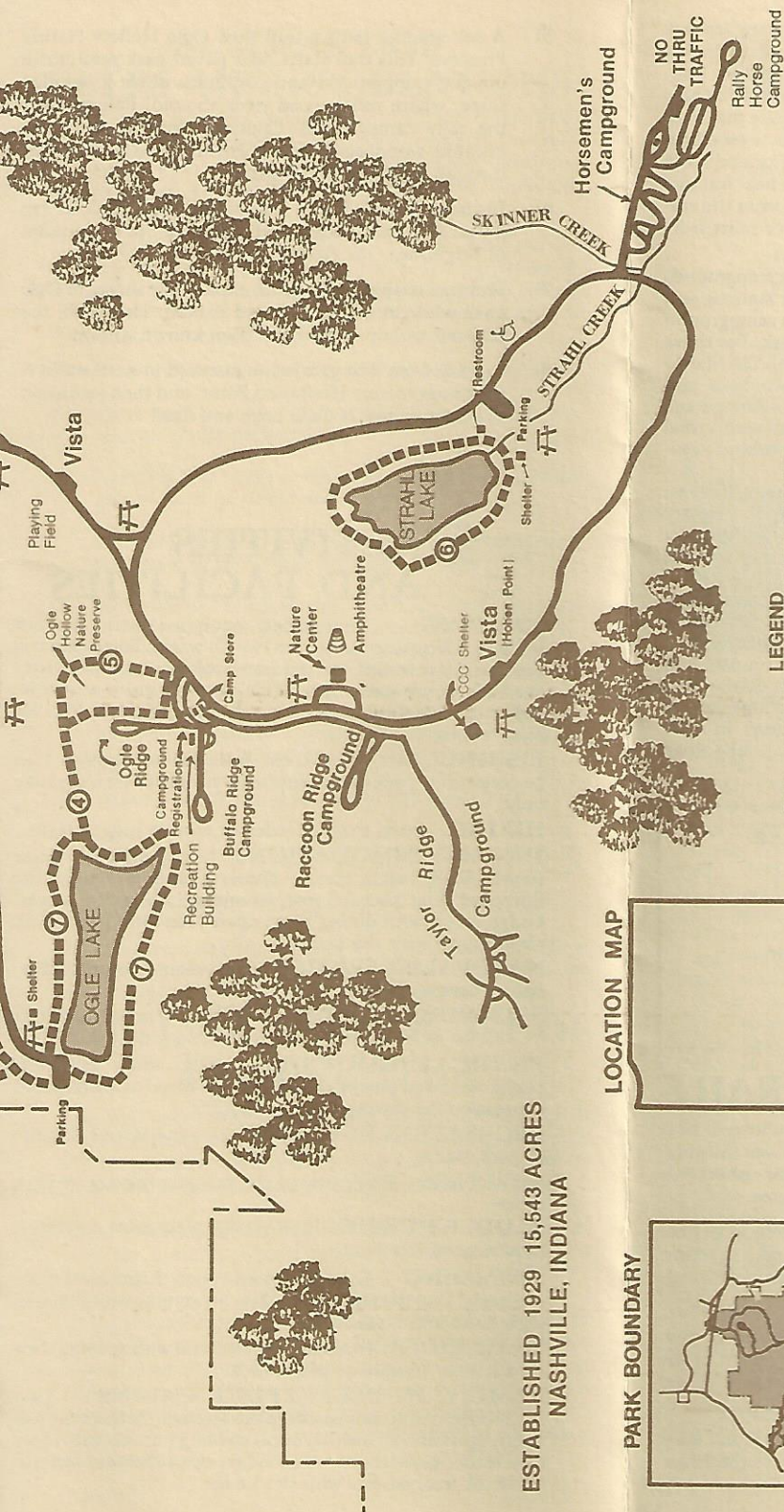
Parking

West Lookout Tower

WEST  
GATEHOUSE







ESTABLISHED 1929 15,543 ACRES  
NASHVILLE, INDIANA

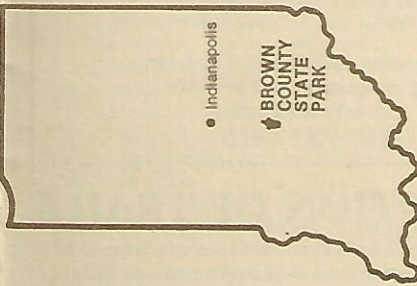
**LEGEND**

	Road		Boundary
	Trail		Picnic Area
	Vista		Usable By Handicapped

**TRAIL TABLE**

TRAIL	MILEAGE	TRAIL TYPE	TRAIL	MILEAGE	TRAIL TYPE
1	1 1/4	Easy	5	3/4	Rugged
2	2	Moderate	6	1 1/4	Easy
3	3/4	Moderate	7	1 1/2	Moderate
4	1 1/4	Moderate	8	3 1/2	Moderate

**LOCATION MAP**



**PARK BOUNDARY**

