

BELL *Helicopter* NEWS

Vol. 17, No. 9

January 24, 1969

Speeding Spares To Customers

Pages 4, 5



Heliports, Helistops Hit Record Number

The number of heliports and helistops in the U. S., Canada and Puerto Rico reached a record 1,892 in 1968, a five-fold increase since 1960, according to Aerospace Industries Association's Vertical Lift Aircraft Council.

The heliport/helistop survey results are contained in the Directory of Heliports/Helistops in the United States, Canada and Puerto Rico, which has just been published by AIA. The information was provided by the Federal Aviation Administration, State Directors of Aeronautics, the Canadian Department of Energy, Mines and Resources, helicopter operators and manufacturers. Of the total number reported, 158 are proposed.

California leads with 354 heliports, New Jersey is second with 177 and Texas is third with 117.

In addition to the heliports/helistops reported in the survey, the petroleum industry, a major user of helicopters, provides more than 100 helistops on off-shore rigs in the Gulf of Mexico. The U. S. Forest Service maintains approximately 300 heliports and more than 5,000 unimproved helistops.

A survey conducted in 1965 revealed there were 34 hospital heliports in the U. S., and today there are 186 landing facilities for the "medicopter" to use in transporting highway accident victims to hospitals or emergency cases from community hospitals to medical centers for special treatment.

Aviation Week Lauds Bell Executives for HueyCobra

President E. J. Ducayet and Vice Presidents Bartram Kelley and Hans Weichsel have been lauded by Aviation Week & Space Technology for the company's "privately financing development of the HueyCobra armed attack helicopter. . ."

The magazine said operations of the HueyCobra in Vietnam in 1968 "proved it was a badly needed addition to the Army's capability."

The magazine listed the Bell executives on an editorial page as among "the people we think have made significant contributions to U. S. aerospace in this tumultuous year (1968)."



EXECUTIVE VICE PRESIDENT J. F. Atkins, left, accepts a check from Atlantic Aviation President W. E. Richards for Atlantic's first JetRanger.

Atlantic Aviation JetRanger Delivery Begins First Bell Dealership in U. S.

The company delivered a Model 206A JetRanger to the Atlantic Aviation Corporation in ceremonies Jan. 8 in Hollywood-by-the-Sea, Fla., formally beginning the first Bell dealership in the United States.

The delivery, coming during the 21st

U. S. Army Orders 35 More UH-1's

The U.S. Army has awarded the company a contract for 35 additional UH-1 helicopters, it was announced Jan. 6 by President E. J. Ducayet.

The order, a modification of a letter contract, carries a partial funding of \$2,435,625.

Army Aviation Systems Command in St. Louis, Mo., will administer the contract.

annual meeting of the Helicopter Association of America, was made by Executive Vice President James F. Atkins to Atlantic President W. E. Richards.

The JetRanger thus becomes the first of a full line of Bell commercial aircraft that will be available through Atlantic.

Under an agreement announced in December, Atlantic will establish Bell sales and service facilities and carry substantial inventories of parts at the firm's three major locations — the Greater Wilmington Airport, Philadelphia International Airport and Teterboro (N.J.) Airport.

Atlantic's primary area of responsibility includes New York City, eastern Pennsylvania, the states of New Jersey, Delaware, Maryland and Virginia.

The new dealer will have major repair and overhaul capabilities at each site.



HERE'S VIEW of company's new Logistics Center. Its proximity to the main plant (upper right) is apparent in photo.

Company Moves into Its New Logistics Center

The company's big, new Logistics Center was pressed into service Monday, Jan. 20, as more than 600 employees reported to the facility for the first time.

Most of the employees came from the company's old Customer Services Building on Highway 183. One department, however, came from Plant 5B.

Their move into the new facility was accomplished — without interruption of service to company customers — in just 10 days, according to Logistics Manager Carl Diehl.

Diehl said credit for the quick, smooth move goes to the company's Plant Layout, Maintenance and Traffic Departments, which — while Logistics employees kept on working — transferred as much spare parts, tools and equipment as they could to the new facility. Then, while most of the employees were off over the weekend of Jan. 18-19, they completed moving the employees' desks, file cabinets and other equipment.

The Logistics Center encompasses 200,000 square feet of floor space. The

old Customer Services Building had 76,000 square feet.

Diehl said the additional space, better layout and more modern facility would enable the company to keep pace with ever-increasing logistics requirements.

The company's logistics manager pointed out that the new Center has enabled the company to consolidate the many operations concerned with logistics. Technical Publications has been at Plant 5B. And spare parts shipping operations have been conducted at several company facilities.

Departments in the new facility are Spare Parts Administration, Spares Engineering, Technical Publications, Logistics Stock Room and Shipping. In addition, the U. S. Army Bell Plant Activity has an office there and the Center is supported by employees from departments such as Quality, Plant Maintenance, Timekeeping and Office Services.

Approximately 30,000 square feet of the new building is office space. The other 170,000 square feet will be used

for spares stores and shipping.

The whole building has year-around air conditioning. Among other features, the Center has:

- Three and a half acres of lighted, concrete storage yard.
- Separate, covered receiving and shipping docks.
- Automatic, adjustable dock boards to facilitate loading and unloading of different-height trucks. There are ten such boards for each dock.
- An enclosed loading area for shipping crated helicopters.
- A 25-foot-wide shed across the back for storage of crates and lumber used to build crates.
- A paved parking lot for 600 cars.
- A cafeteria.

The one-story building, the outside of which incorporates sandwich-type metal panels painted light beige with brown trim, is located on company property adjoining the main plant. It is bounded on the south by Trinity Boulevard, on the west by Norwood Avenue and on the north by a railroad right of way.



'Blue Streak' Will Spare Parts to Cus

A dynamic new program designed to help speed spare parts from the company to customers has been inaugurated.

It's called "Blue Streak."

If you haven't already seen evidence of it, you soon will. For this is a program that concerns all of us — the whole Bell team. And no stone is being left unturned to make every employe and every supplier aware of its importance. Stickers on parts, packages and paperwork will constantly remind employes and suppliers of the program.

"Blue Streak" obviously is indicative of the company's emphasis on its spare parts business.

As you know, helicopter production during the past few years has soared in keeping with this nation's commitments in Vietnam. Our spare parts

business has grown proportionately.

Spares today, what with nearly 12,000 helicopters in the field, is a big part of our total business.

Recognizing that it would be, management has long been planning accordingly.

Because management knew we'd outgrow the old Customer Services Building, company executives planned for the new Logistics Center (see photo on page three), which we moved into Jan. 20.

And to help achieve maximum utilization of the new facility, management has called in top people of key departments and said, in effect, "Let's make sure we keep in step with our growing spare parts requirements. We've provided you with the facilities and equipment. You decide how it's to be done

— overhaul procedures and systems, whatever necessary — but let's ensure that our spare parts business is conducted in the Bell tradition of deliver-

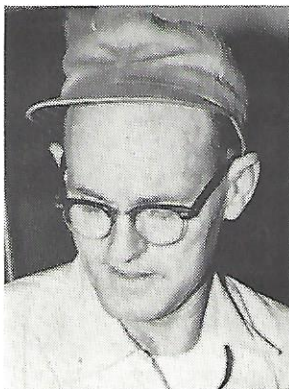
On the cover, Shipping's Fred Parker Jr. is shown speeding "Blue Streak"-marked spare parts to customers.

ing quality parts on time at a fair price. We've been on schedule with production for more than 12 years — let's do the same with spares."

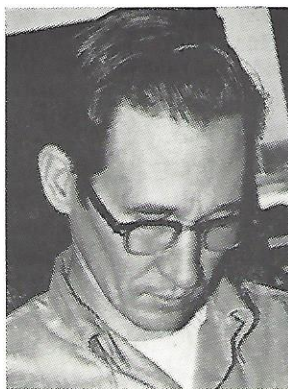
Thus the "Blue Streak" program was established.

Its theme, which you will see on publicity material and stickers, is depicted by a blue lightning bolt. The

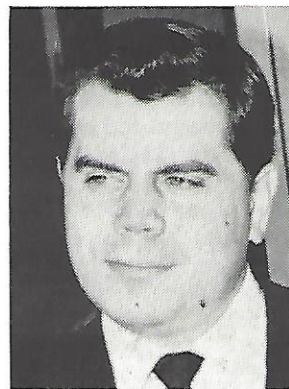
TEAM MEMBERS LIKE THESE WILL



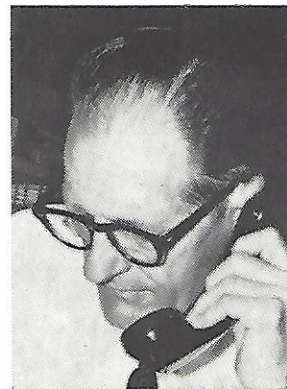
HULON BELLOMY
Quality



BOB CYPERT
Receiving



JOHN HARAN
Supplier (Murdock)



BILL HOUK
Purchasing



HELEN MYERS
Spares

Speed tomers



BURT CARLSON, company purchasing agent, explains "Blue Streak" program, which is depicted by lightning bolt. Idea is to speed spares to customers.

theme is to develop a concept of total support to customers. The idea is to get parts from the company to customers as quickly as possible. The streak of lightning indicates the speed with which this must be done.

Out of the program already have come new ways of doing things. And there will be more new systems and procedures stemming from "Blue Streak." For example, by March 1 all spares records will be automated — kept by data processing machines. Data Processing will provide management "instant" information on spares requirements and status. It will have built-in provisions for expediting — getting parts, when a ship is on the ground, to customers even faster than the usual speedy service.

Perhaps most important, "Blue

Streak" calls for coordinated team action. Purchasing Agent Burt Carlson heads a steering committee which includes Jack Boehringer of Dispatching, W. F. Boyd of Spares, Jack Bufton of Quality, W. L. Hamilton of Production Control, Lloyd Shoppa of Management Engineering and Al Slisz of Spares Release.

Assisting the steering team will be an advisory committee — Charles Jackson of Traffic, Joe Lynch of Shipping, Porter Moore of Receiving, M. P. Smith Jr. of Production Engineering, H. E. Tindel of Manufacturing and Wilson Vaughan of Stores.

Departmental coordinators may also soon be named.

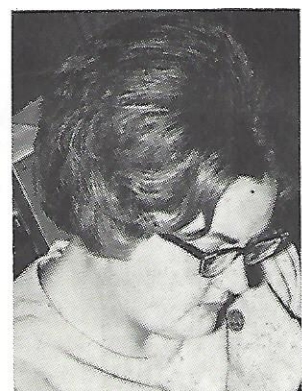
Most important, Carlson has stressed, "Blue Streak" must be a team effort. For seeing to it that the company's

military and commercial customers get quality spare parts on time involves more than just the Spare Parts Department. It involves everyone at Bell and every supplier — from the stenographer who types the initial paperwork to the Shipping Department dock worker who finally loads the cartons of parts into trucks.

"Even if it's only one part, it must be a good, quality part delivered on time," emphasized Carlson. Down time for lack of parts is no good.

"We've always given good service. But now we've got the facilities, data processing equipment, people and capability to give even better service. We must keep pace with the tremendous growth of our spares business. All it will take is for each of us to do our very best on every order we handle."

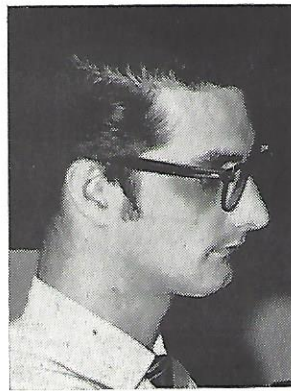
MAKE 'BLUE STREAK' A SUCCESS



ANN ROBINSON
Production Control



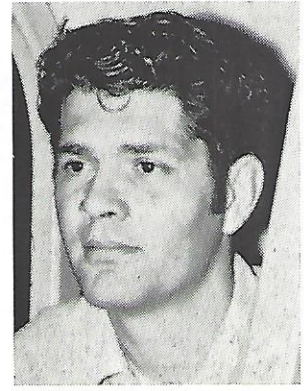
B. W. SIMPKINS
Sub Assembly



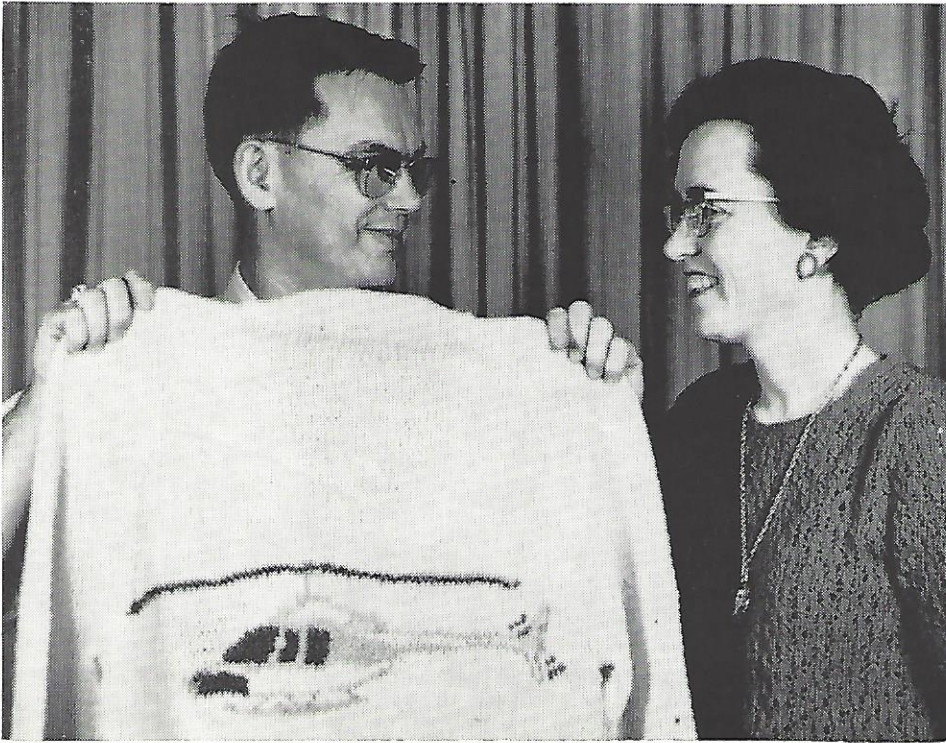
JACK SNELL
Data Processing



TOM TURNER
Spares Administration



PAT WOLFF
Traffic



LEE ERB holds sweater his wife, Alice, right, knitted for him. The JetRanger, done in light and dark blue, gray and red, is on the back. The Bell Helicopter emblem is knitted on front of the sweater. Erb, manager of independent research and development, laid transparent graph paper over a picture of the JetRanger to mark out stitches for the different colors. His wife knitted the sweater in her spare time over a period of two months. She also knitted the dress she has on.



Label Will Be Handy Reference

A gummed label that just might come in handy will be in all employees' Jan. 31 pay check envelopes.

The label contains the company number employees should call in case they should ever be absent. Both the company's Dallas and Fort Worth numbers are on the label.

The company's Communications and Timekeeping Departments suggest employees take the label home, peel its backing off and apply it to their home phones as shown above. That way, the label will be a ready reference should they need to report absence from work.

54 Will Receive Service Awards

Fifty-four employees will mark service anniversaries in January.

Scheduled to receive 15-year pins are:

- Spare Parts Administration—L. F. Farmer and W. M. Parrish.
- Accounting—H. E. Fromme.
- Data Release—O. M. Belcher.
- Dispatching—B. J. Peck.
- Plant Maintenance—A. H. Voges.
- Paint Shop-Globe—J. E. Stutt.
- Engineering Design—F. C. Schroder, K. M. Bradford and B. J. Bailey.
- Electronics—B. R. Hart.

Getting 10-year emblems are:

- Accounting—J. G. Potter.
- Dispatching—S. A. Reasoner.
- Service—J. E. Levesque.

Engineering Laboratories—W. E. Hardwick.
Engineering Design—R. K. Wernicke and J. Meijer Drees.

Spare Engineering—G. J. Senecal.
Photographic—C. E. Maus.

Five-year pins go to:

- Spare Parts Administration—D. J. Whitehead and F. D. Armitage.
- Accounting—S. Haseloff.
- Timekeeping—P. F. Burris Jr. and D. F. Looney.
- Purchasing—L. E. Allen and H. G. Jones.
- Data Processing—P. E. Urban Jr. and R. J. Calhoun.
- Dispatching—R. A. Ellis and R. R. Powell.
- Stock Cribs—G. P. Thompson.
- Quality—A. E. Sammons and J. R. Brown.
- Tool Grind and Repair—W. C. Knight.
- Tool Make—W. L. Speer.
- Sheet Metal Sub Assembly—E. A. Myers.
- Tubes and Cables—J. C. Morris.
- Electrical Assembly—F. M. Minix.
- Model 204/205 Final Assembly—B. Allmon and V. M. Dunn.
- Model 47/206 Final Assembly—G. B. Mills and R. E. Roglin.
- Model 209 Final Assembly—J. C. Hutton and E. R. Stepp.
- Paint Shop—E. Mahon.
- Modification—L. J. Martin.
- Plexiglass—M. K. Eagle, R. D. Long and R. Martinez.
- Technical Publications—H. W. VanWesten, J. C. Nix, S. B. Hart and E. E. Farr.
- Production Engineering—C. H. Wisner.

H. A. Dickinson Retires

H. A. Dickinson retired Jan. 17 after nearly 18 years' service.



DICKINSON

Dickinson, 65, worked in the Sheet Metal Sub Assembly Department at the Globe plant.

He and his wife and daughter will live in Plainview, Ark.

Dickinson plans to "take it easy awhile," fish and hunt.

Sympathy

- TO C. A. EDGINGTON, Machine Shop, and C. P. EDGINGTON, Finishing, on death of mother.
- TO J. GENTRY, Fixture Assembly (Sub-primary), on death of mother.
- TO S. E. FERGUSON, Machine Shop, on death of father.
- TO W. B. HACKNEY, Traffic, on death of mother.
- TO W. D. McCAIN, Quality, on death of mother.
- TO JOYCE PHILLIPS, Industrial Relations, and J. T. OWENS, Paint Shop, on death of mother.
- TO DENNIS YEATTS, Purchasing, on death of mother.

Stepp Gets Patent Award

Engineering's Thomas B. Stepp soon will be \$200 richer.

Reason: A patent has been allowed on his invention, a variable flow bleed air mixing valve.

In accordance with the company's patent award policy, the inventor is entitled to an award of \$200.

John W. Brannam Dies

John Wesley Brannam, a member of the Machine Shop, died Jan. 15.

He had been with the company 17 years.

Brannam, 61, lived at 4124 Sperry in Dallas. Survivors include his wife, two brothers and three sisters.

Employee, Children In Show, Rodeo

Going to the Southwestern Exposition & Fat Stock Show or Rodeo?

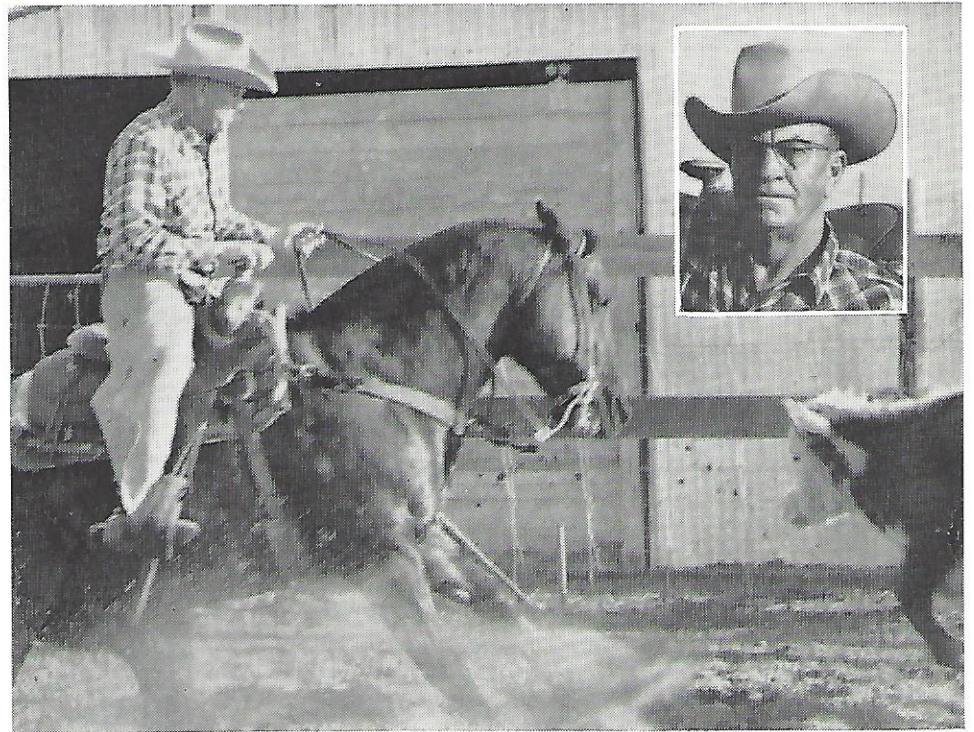
If so, you may want to watch Safety Engineer R. (Andy) Anderson compete in the cutting horse contest or see some calves children of Bell employees will have on exhibit.

Anderson is scheduled to ride during afternoon performances of the rodeo Feb. 1 and 2.

Gerald Hunt's three children (Neal, 12; Amy, 11; and Susan, 9) each will have a calf entered in the Fat Stock Show. Hunt works in Engineering Laboratories.

Also exhibiting calves will be James Oldham's two children, Gerry, 12, and Sherry, 10. Oldham works in Weld and Steel Bench.

All of the youngsters are in the Keller 4-H Club.



ANDY ANDERSON (also shown in inset) displays skill he hopes will win cutting horse contest during Southwestern Exposition & Fat Stock Show Rodeo.

CLASSIFIED

The Bell News classified section is a service for employees. There is no charge for placing an ad. However, an ad must not contain more than 25 words. Simply write the information on a piece of paper—adding your name, clock number and plant telephone extension at the bottom—and send it through inter-office mail to the Bell News office at the Hurst plant. Ads can not be accepted over the telephone.

WANTED

TO JOIN OR FORM CARPOOL from South Hills area, Fort Worth, to Hurst plant, first shift. 292-2432.
 RIDE OR JOIN CARPOOL from South Hills area, Fort Worth, to Hurst plant, second shift. Jack Ward, Ext. 6297 or WA 7-7695.
 RIDE OR JOIN CARPOOL from Forest Hill to Hurst plant, first shift. JE 4-3965.
 TO FIND SOMEONE who would like to alternate weeks in driving to work. Live at 5905 Calmont in Fort Worth, work second shift, Hurst plant. Gary Lanier, Quality, PE 7-0885.
 TO BUY ice hockey tickets. 277-3898.
 TO BUY partial or total ice hockey coupon books. 277-8057 after 5 p.m.
 TO BUY lapidary equipment. BU 1-2685.
 TO BUY old violin in need of repair. JE 5-7364.
 NICE HOME for medium-size, black female dog. Has been spayed. Good with children. GL 1-3144.

RIDE WANTED

FROM Wedgwood area of Fort Worth to Plant 5A, first shift. AX 2-4502 after 5:30 p.m.
 FROM 1333 Simpson Dr., Hurst Shady Oaks Addition, to Hurst plant, first shift. Sherry Cranfill, Ext. 6357.
 FROM Old Granbury Road and Loop 820, to new Logistics Center, first shift. Harry Cannon, Ext. 5585.

RIDERS WANTED

FROM White Settlement to Plant 4, first shift. D. C. Woodell, CI 6-1441.
 FROM Azle or Lake Worth area to Hurst plant, first shift. B. C. Stanford, Ext. 4159 or 257-4807 (Azle).

FOR RENT

FURNISHED MOBILE HOME. Two bedrooms, one bath, central heat and air. In country outside city limits, Grand Prairie. Water paid. \$135 month. 282-9421.
 THREE-BEDROOM HOUSE on 10 acres. Corrals, stock tank, four-car garage with tack room. BU 1-6309.
 MOONEY MK-21, 1964 model. Excellent condition. By hour or month. Reasonable. George Rodgers, PE 2-8297 after 5 p.m.

FOR SALE

INCOME TAX SERVICE. 13 years experience. BU 1-1109.
 INCOME TAX SERVICE. Eleven years experience. 731-2268.
 SCOTT THEATRE TICKET BOOK (six tickets), \$4. GL 1-8501.
 GOOD UPRIGHT PIANO, \$75. Clarinet, \$50. Trombone, \$50. 236-8143.
 FENDER MUSIC MASTER GUITAR. New strings, leather case (velvet lined). Also, Gibson two-jack amplifier. All for \$75. WA 6-4554.
 GERMAN SHEPHERD COLLIE PUPS. Five males, three females. \$5 each. 645-0655 (Cleburne) after 6 p.m.
 TWO WESTERN PLEASURE prospective barrel race horses. Registered Quarter studs, five and seven years old. Bob Short, Ross Downs, Colleyville.
 LAWN MOWER. One year old. Sears, four-cycle engine. In excellent condition. \$30. CR 5-7155.
 TWO SETS OF SKIS AND POLES, 76 and 70 inch. \$75 each. Also, pair of boots (10D), \$25. Never used. GL 1-3144.
 PORTABLE GENERAL ELECTRIC STEREO PHONOGRAPH. Like new. \$25. BU 1-3031.
 1962 MODEL CATALINA REFRIGERATOR with separate freezer section. Sixteen cubic foot. Good condition. \$75. BU 3-4948.
 1962 MODEL 16-CUBIC-FOOT COLDSPOT UPRIGHT DEEP FREEZER. Excellent condition. TE 4-2116.
 DEEP FREEZE, \$180. Miscellaneous furniture, complete bedroom suite, \$70. May be seen at 2414 Ozark Dr. in Arlington. CR 7-4737.
 REFRIGERATOR-FREEZER. Western Auto 14-foot model, five years old. First offer over \$45. Also, Gretch professional drum set, including bass, tom and snare, stands, sticks and cymbals. \$150. CR 4-8442.
 FOUR BURNER GAS RANGE. White. Oven, broiler and storage space. TE 8-6294.
 36-INCH GAS RANGE with oven and storage. In working condition. \$25. JE 4-3965 after 5:30 p.m.
 HIGH-CHAIR, \$5. Also, electric baby dish, \$4; infant seat, \$1; white bassinette, rolling stand, pad and yellow liner, \$10; beige car seat, \$5; boy's and girl's baby clothes, 25 and 50 cents; baby swing, \$2. 282-0021.
 36-INCH GAS RANGE with oven and storage. In working condition. \$75. JE 4-3965 after 5:30 p.m.
 LARGE FREEZER (new), \$180. Also, French Provincial chest (new), \$80; bedroom suite, \$65; year-old Kirby vacuum, \$70. J. W. Jeffery, Ext. 4118 (Globe).
 1968 MERCURY OUTBOARD MOTOR (50 hp), electric start, alternator. Used 25 hours. Excellent condition. \$650. 268-0410 after 5 p.m. weekdays.

1968 HARLEY DAVIDSON XLCH MOTORCYCLE. Bags and windshield, 4,900 miles. Like new. \$1,200. 268-0410 after 5 p.m. weekdays.
 1968 HONDA CL 175, extra tire and helmet. Bright orange with chrome fenders. 2,235 miles. \$500. BU 2-2151.
 1968 HONDA 125cc. \$325. BU 3-4968.
 SMALL CAMPING TRAILER. \$75. GL 1-8501.
 TENT TRAILER (Western Field), \$100 equity, balance \$419. Payments \$23 month. Montgomery Ward has 18-month note. J. L. Carter, Ext. 6451 or 6439.
 FRONT AND BACK SEATS for 1956 Chevrolet. Good shape. BU 1-7845.
 1956 CHEVROLET with automatic transmission. Good condition. BU 1-7845.
 1963 CORVAIR MONZA COUPE. Three speed, radio, wire wheels. A-1 condition. 292-5762 (Fort Worth) or 287-5351 (Keller).
 1968 VOLKSWAGEN BUS in excellent condition. 12,000 miles, year left on two-year warranty. CR 7-0982 after 5 p.m.
 1958 PLYMOUTH STATIONWAGON. Runs good. \$200. CR 4-9903.
 1956 FORD V-8 CUSTOM two-door. Good condition. Original owner. \$175. AT 4-8690.
 1961 FORD FALCON STATIONWAGON. Good work car. \$250. Also, 1964 Chevrolet half-ton pickup. Long-wheel base, radio, heater. Extra good. TE 8-3002.
 LATE 1965 BUICK SKYLARK Grand Sport two-door hardtop, 25,877 miles. Extra clean. Air, power, bucket seats, floor shift automatic, good tires. \$1,575. CR 4-9440.
 1966 BEIGE PONTIAC BONNEVILLE four-door hardtop. Low mileage, extra clean. \$1,995. BU 1-0266 after 6 p.m.
 1965 GRAND PRIX. Loaded, new tires, black vinyl top, blue and blue interior. 48,000 miles. Excellent condition. \$1,595. TE 4-0047 after 6 p.m.
 1968 GRAND PRIX. Vinyl top, 428 engine, air, all power, cruise control, radial tires, reverberator radio. AT 4-1216 evenings.
 CHEVROLET PICKUP TRUCK with 283 V-8 engine, standard transmission, long flectside bed, radio, chrome side mirrors and bumpers. Clean. \$995. BU 3-5584.
 1963 CHEVROLET PICKUP (half-ton) with four-speed transmission, 261 motor, new tires and paint. \$850. 478-9489.
 NEW 1939 CHEVROLET ONE-BARREL CARBURETOR. Also, 283 Chevrolet two-barrel carburetor, Chevrolet four-barrel carburetor, heavy duty bumper jack. BU 3-5584.
 THREE-BEDROOM BRICK in North Richland Hills. Central air and heat, fireplace, large paneled den. 1,800 feet. Extra clean. Five and a half years old. BU 1-1277.

REDUCED-PRICED

Globetrotters Tickets Available

Reduced-price tickets for a Harlem Globetrotters' performance will be made available by the company starting Jan. 27.

To be sold for only \$1 each will be tickets for the Globetrotters' 7 p.m., Sunday, Feb. 9, performance at the new Tarrant County Convention Center arena. The company has bought every seat in the house for resale to employes at the special reduced price.

Seating will be on a first-come, first-served basis.

The game will be backed up by entertainment personalities the Globetrotters bring along for the pre-game and between-halves variety show, talented artists discovered in various parts of the world by the "Magicians of Basketball."

All sales will be via payroll deduction. Employes will receive tickets when they sign cards authorizing the company to deduct price of the admissions from their pay.

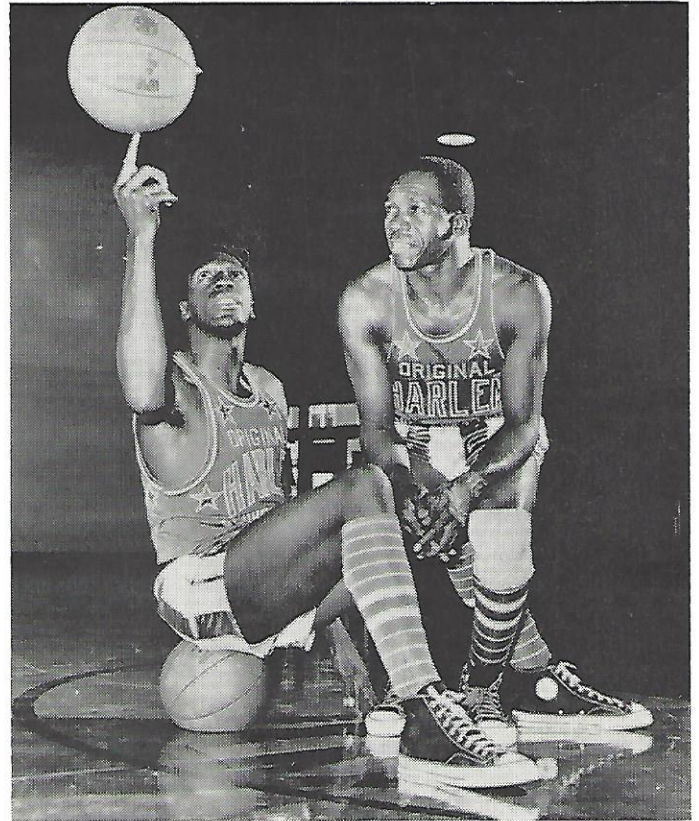
Tickets will be sold per this schedule:

PLANT 4
Monday, Jan. 27

1st Shift Cafeteria during lunch.
2nd Shift Cafeteria, 4 to 4:30 p.m.
3rd Shift Call Extension 2246 (Hurst).

PLANT 2
Monday, Jan. 27, and Tuesday, Jan. 28

1st Shift Cafeteria during lunch.
2nd Shift Cafeteria, 4 to 4:30 p.m.
3rd Shift Labor Relations Office, 8 to 8:15 a.m.



"SEE COACH, IT'S EASY" — Clown Prince Meadowlark Lemon spins ball for coach-player Leon Hillard.

PLANTS 5A, 5B, 5C, 5D, 6

Tuesday, Jan. 28

Plant 5A—1st Shift Cafeteria during lunch periods.
Plant 5A—2nd Shift Cafeteria, 4 to 4:30 p.m.
Plant 5A—3rd Shift Cafeteria, 8 to 8:15 a.m.
Plant 5B, 5C, 5D Call Extension 2246 (Hurst).
Plant 6—1st Shift Cafeteria during lunch periods.
Plant 6—2nd Shift Cafeteria, 4 to 4:30 p.m.

PLANT 3, CUSTOMER LOGISTICS,

COMMERCIAL SALES

Wednesday, Jan. 29

Plant 3—1st Shift Cafeteria during lunch periods.
Plant 3—2nd Shift Cafeteria, 4 to 4:30 p.m.
Customer Services, 1st Shift Cafeteria during lunch periods.
Customer Services, 2nd Shift Cafeteria, 4 to 4:30 p.m.
Commercial Sales Call Extension 2246 (Hurst).

PLANT 1

Thursday, Jan. 30 and Friday, Jan. 31

1st Shift Cafeteria during lunch periods.
2nd Shift Cafeteria during lunch periods.
3rd Shift Cafeteria, 8 to 8:15 a.m.



BELL HELICOPTER

A **Textron** Company

Post Office Box 482

Fort Worth, Texas

BULK RATE
U.S. POSTAGE
PAID
FORT WORTH, TEXAS
Permit No. 1859

Levy Joffrion, Editor
Hurst Plant, Extension 2514

The Bell Helicopter News, official publication of Bell Helicopter Company, is published by the Public Relations Department and distributed by mail on alternate Fridays to all Bell Helicopter employes and their families.

All original material appearing in this publication may be reproduced providing proper credit is given.

Lawrence D. Bell Library
Mentone School
Mentone, Indiana 46539 (0
Attn: Mr. Walter Kent, Prin.

Return Requested.

January 24, 1969