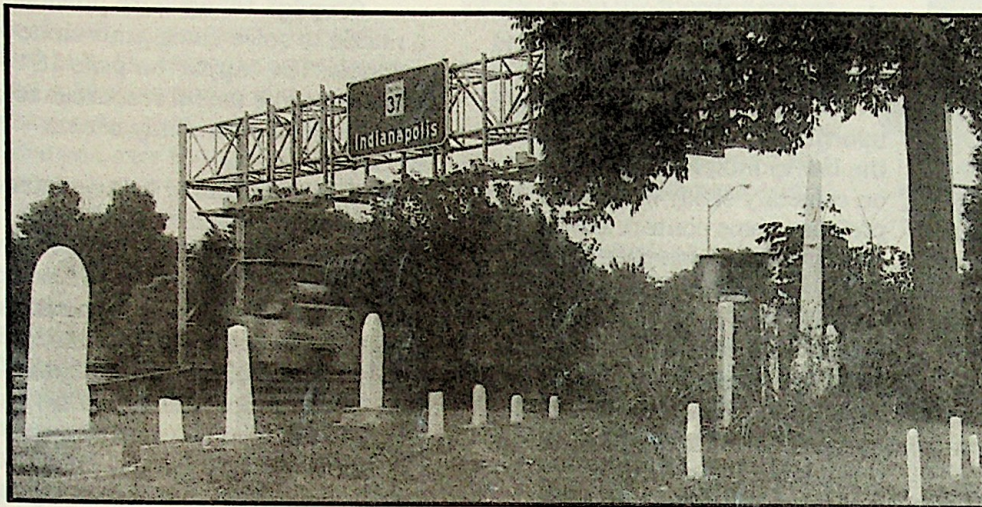


# DESTINATION . . .

# THE CEMETERY

Indiana Historical Bureau



*Whitesell Cemetery, like many others, has slowly been surrounded by modern civilization. Just as those who have gone before us, and those yet to come, we have an obligation to protect these little patches of history.*

*Whitesell Cemetery, located in Castleton, Lawrence Township, Marion County, Indiana, is located just west of SR 37 north of its intersection with I-465 on the northeast side of Indianapolis. The top photograph was taken looking southeast, and the bottom, looking northeast.*



Indiana Historical Bureau



## THE INDIANA HISTORIAN EXPLORING INDIANA HISTORY

PUBLISHED BY THE INDIANA HISTORICAL BUREAU, STATE OF INDIANA