

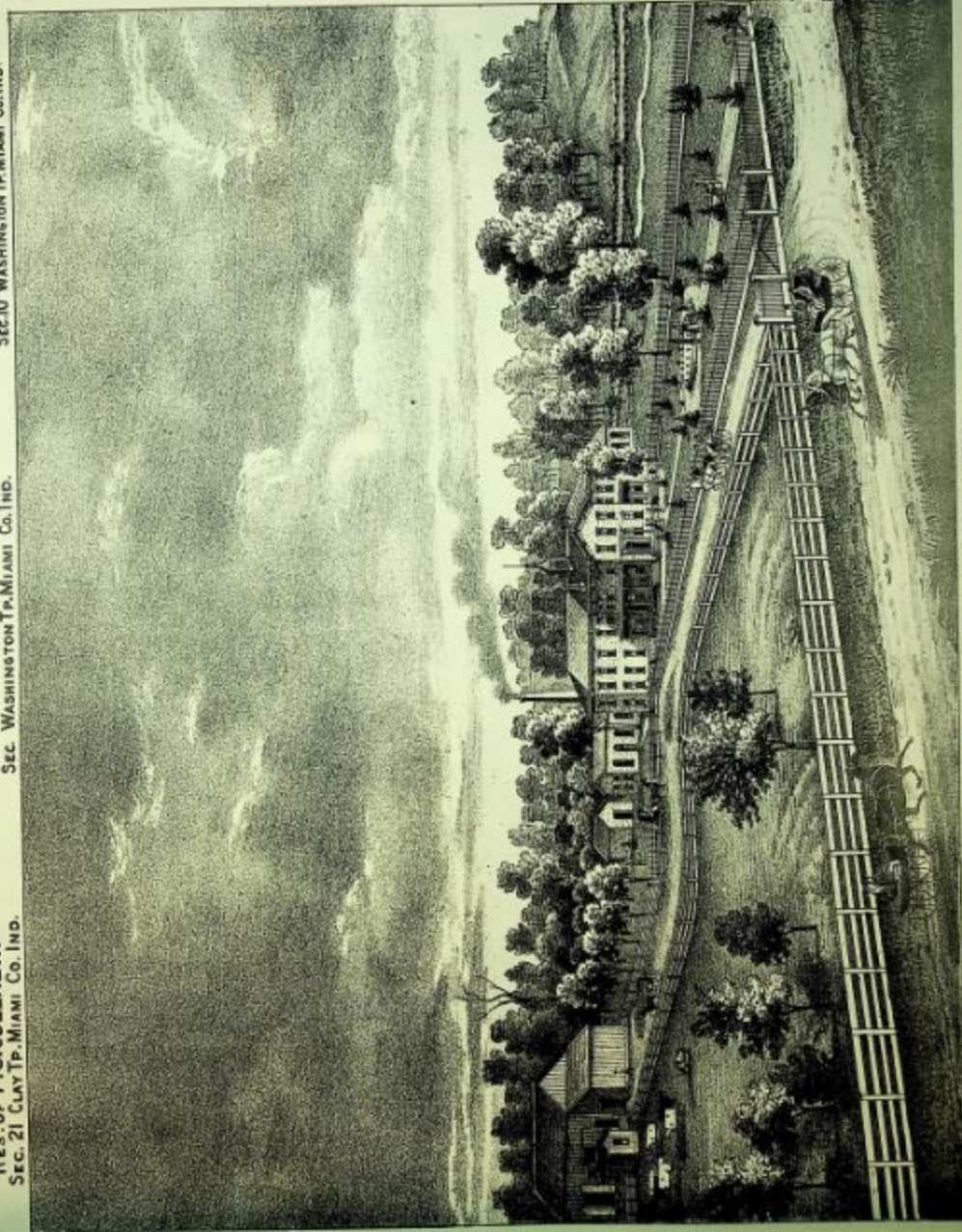
RES. OF P. S. GOLLADAY  
SEC. 21 CLAY TP. MIAMI CO. IND.



RES. OF MRS. ELIZA HARLAN  
SEC. WASHINGTON TP. MIAMI CO. IND.



RES. OF ISAAC CRANE  
SEC. 10 WASHINGTON TP. MIAMI CO. IND.



MIAMI COUNTY INFIRMARY  
WASHINGTON TP. MIAMI CO. IND.